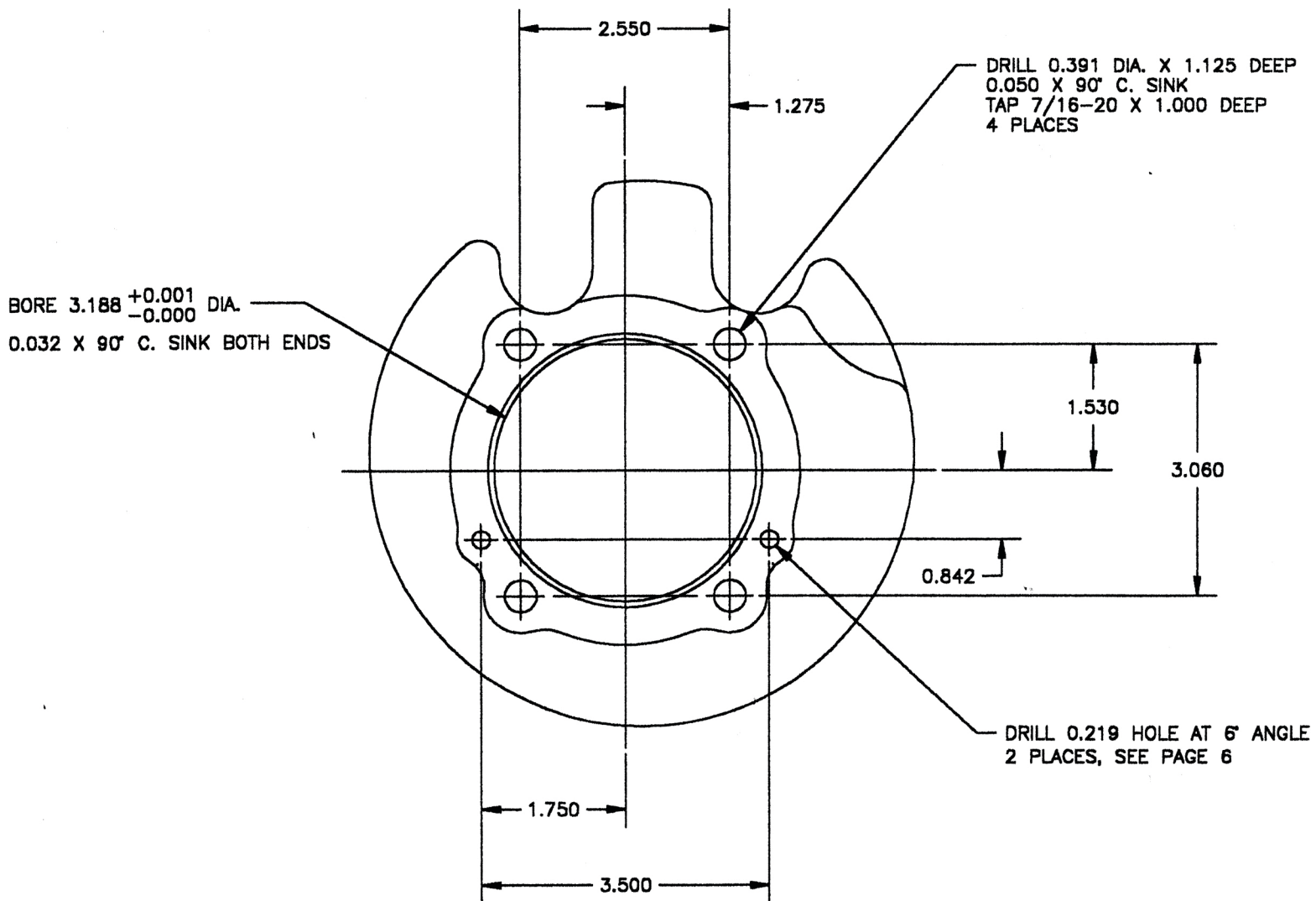


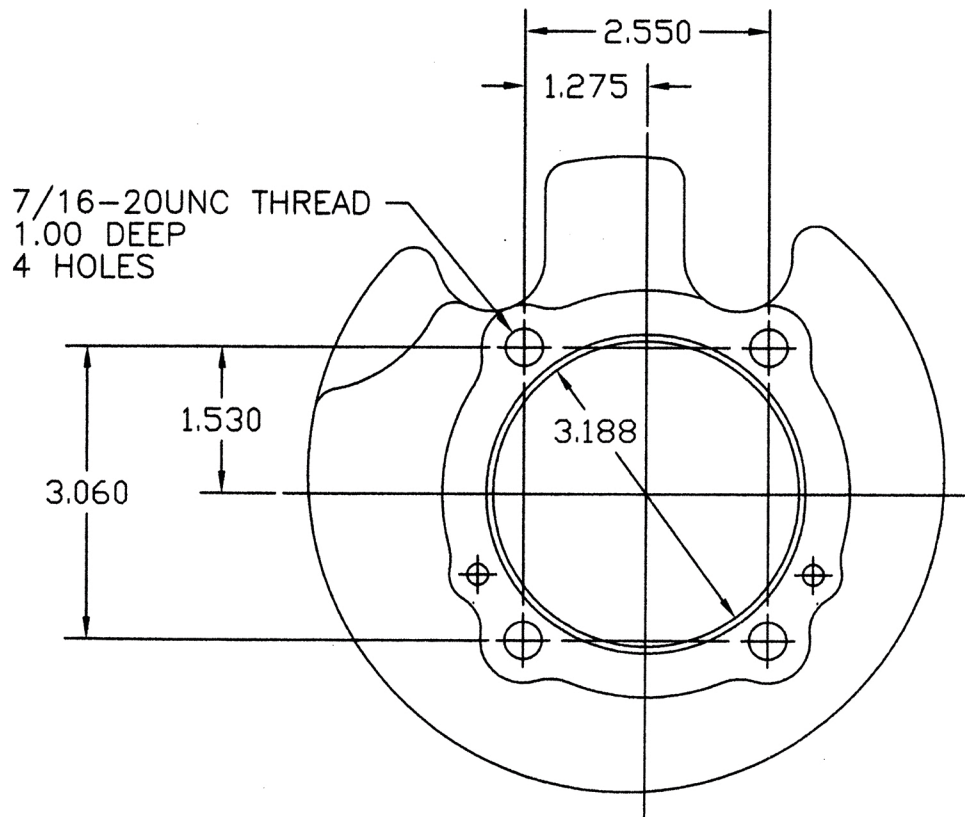
V-Twin Mfg.
Fits 1972 XL Models
VT No. 11-0488

This is a custom application and rider safety depends on proper installation. This product should only be installed by a knowledgeable and trained motorcycle technician. V-Twin Mfg. accepts no responsibility for improper installation.

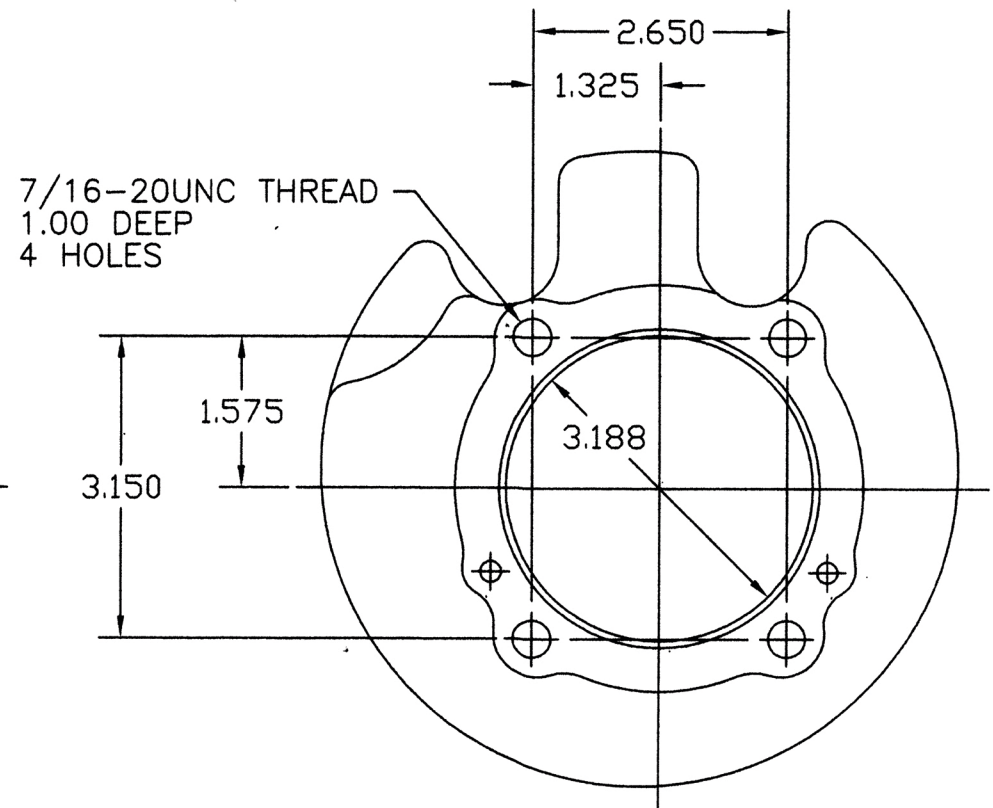
If you do not know whether you have a early 1973 XL or a late 1973 XL see the illustration below. The below diagram will show you the measurements for an early model 1973 XL cylinder.



1,000 CC SPORTSTER CYLINDER IDENTIFICATION CHART



XL CYLINDER TOP
1,000 CC
1972
VT 11-0488 FRONT
VT 11-0489 REAR



XL CYLINDER TOP
1,000 CC
1973-1985
VT 11-0504 FRONT
VT 11-0505 REAR