



Instruction Sheet For #2243

Cam Seal Remover & Installer Use on Big Twin 1970-present



1. Refer to H.D.® Service Manual to remove sensor plate and rotor.
2. To remove old seal, install tool to inside of cam cover using (2) 8-32 , #2297 screws, using a 9/64 Allen wrench. (see diagram) Apply a small amount of lube to screws.
3. Rotate cup to expose the (2) 1/8" holes, preferably vertical at 12 and 6 o'clock. Turn in center screw #3 with a 3/16 Allen wrench, until cup #4 gently bottoms onto face of seal. Apply a small amount of lube to screws. Install the 2 self tapping screws, #2287, into the two 1/8" holes. Using pressure, start self tapping screws. Tighten screws just so the head of screw makes contact with tool (sometimes a light hammer tapping will help start the screws).
4. Once tight turn out center screw, counter clockwise, removing seal.

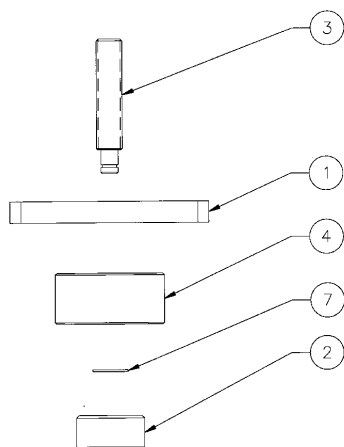
TO INSTALL SEAL

1. Apply a small amount of oil on the inside lip of seal, and center seal over hole and cam. Install tool to inside of cam cover using (2) 8-32 screws, #2297. Apply a small amount of lube to screws.
2. Center cup #4 over seal. Turn center screw in clockwise until cup bottoms on cover.

TO REMOVE CAM COVER

This tool can also be used to remove cam cover without prying off.

1. Install cup #2 with counter bore towards tool. Make sure all bolts are removed from cam cover. Install tool with the (2) 8-32 screw to inside of cam cover. Turn center screw in clockwise slowly to remove cover.



PARTS AVAILABLE SEPARATELY

No.	Qty.	Description	Part No.
7	1	ROTO CLIP	2304
6	2	SCREWS (NOT SHOWN)	2297
5	2	SHEET METAL SCREW (NOT SHOWN)	2287
4	1	CUP, INSTALLER & REMOVER	2243-4
3	1	SCREW, INSTALLER & REMOVER	2243-3
2	1	CAP	2243-2
1	1	PLATE, INSTALLER & REMOVER	2243-1

CAUTION: Wear safety glasses. Excessive force may damage parts!
See JIMS® catalog for over 100 other top quality professional tools.
The last tools you will ever need to buy.

"From the Track... To the Street!"

555 Dawson Drive, Camarillo, CA 93012 • Phone 805-482-6913 • Fax 805-482-7422