



## Instruction Sheet For #95760-57

### ROCKER BUSHING OR BEARING REMOVER TOOL

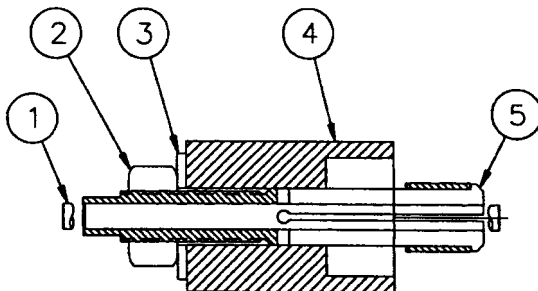
Use on Big Twin 1966-Present  
Use on Sportster 1957-Present

May be used to remove bearings in rocker arms that use bearings.



*"Warning disconnect negative cable of battery to avoid accidental start ups"*

1. Refer to H.D.® Service Manual for removal of rockers.
2. Hold rockers horizontal in vice using JIMS® tool #1057, vice soft jaws.
3. Disassemble tool by removing nut, brass washer, sleeve, and inner pin. This will leave just the remover portion of the tool #5 (the piece with the four grooves). We call it the puller.
4. Push the puller through rocker bushing (grooved end first). You can tap end of puller with a soft hammer until the puller is completely through bushing.
5. Now install body #4 with puller bore towards bushing, next apply a little oil to washer #3 and nut #2
6. Snug up nut, apply a little oil to the pin #1 and slip pin through center until flush with puller.
7. With your 3/4" wrench turn nut clock wise until bushing is pulled free of rocker (you may need to hold puller with your 3/8" wrench to keep it from turning).
8. Do the same for the other bushing, except you slip #5 through backwards, or push through (see line #4). Use JIMS® reamer tool #94804-57 to line ream new bushings. Bushing #17428-CC is for Crane's rocker that had bearings. Bushing #17428-57 is for pre EVO. Use #17428-83 for all EVOS. Use JIMS® #2124 press fit lube.



#### PARTS AVAILABLE SEPARATELY

No.	Qty.	Description	Part No.
1	1	PIN	2142
2	1	NUT	2128
3	1	BRASS WASHER	2129
4	1	BODY	95760-57-4
5	1	PULLER	95760-57-5

**CAUTION:** Wear safety glasses. Excessive force may damage parts and tool.  
See JIMS® catalog for over 100 other top quality professional tools.  
The last tools you will ever need to buy.