

**V-Twin Mfg.
Automatic Primary Chain Tensioner
Fits 1985-UP EVO & TC-88 Models
VT Part No. 18-0700**

This is a custom application and rider safety depends on proper installation. This product should only be installed by a knowledgeable and trained motorcycle technician. V-Twin Mfg. accepts no responsibility for improper installation.

Installation Instructions:

1. Refer to the appropriate Service Manual and remove primary cover.
2. For 1985-2000 model motorcycles, remove manual tensioner and replace the carriage bolt as follows:
 - a. Remove two screws (5) and nut and washer (3), and remove chain tensioner (4).
 - b. Remove two screws (1) and anchor plate (2).
 - c. Replace the carriage bolt in the anchor plate with the carriage bolt from the kit.
 - d. Apply 2-3 drops of Loctite 262 (red) to the threads of the anchor plate mounting screws (1), then reinstall anchor plate and two screws. Tighten screws to 12-14 ft-lbs.
- For 2001 and later model motorcycles, remove manual tensioner as follows:
 - a. Remove nut and washer (1) and remove chain tensioner (2).
3. Install the Automatic Primary Chain Tensioner bracket (2) over the carriage bolt (1), behind the primary chain. Loosely secure the bracket using the nut and washer removed in Step 2.
4. Install Automatic Primary Chain Tensioner (2) to the Automatic Primary Chain Tensioner bracket with two screws (3) from the kit. Do not tighten screws at this time.
5. Position the and bracket as follows:
 - a. Carefully lift the Automatic Primary Chain Tensioner and bracket assembly to take the slack out of the chain.
 - b. Lower the Automatic Primary Chain Tensioner and bracket assembly 1-2 notches to allow approximately 1 in. of chain freeplay at the top of the chain.
 - c. Tighten nut (1) to 21-29 ft-lbs.
 - d. Tighten auto tensioner hex screws (3) to 17-19 ft-lbs.
6. Remove tie wrap and shipping plate (4) to free the Automatic Primary Chain Tensioner Flex the top of the chain to allow the auto tensioner to adjust itself. Once the shipping plate is removed and the chain is flexed, the spring-loaded wedge of the Automatic Primary Chain Tensioner should move to the left. If the shoe does not move up and down when the chain is flexed, then the Automatic Primary Chain Tensioner bracket is positioned too high and must be lowered. Install the shipping plate or a tie wrap to secure the shoe, loosen the nut and screws, lower the assembly, and re-tighten the nut and screws according to the specifications above. Then repeat this step.
7. Refer to the appropriate Service Manual and install the primary cover with a new seals and refill the primary oil.

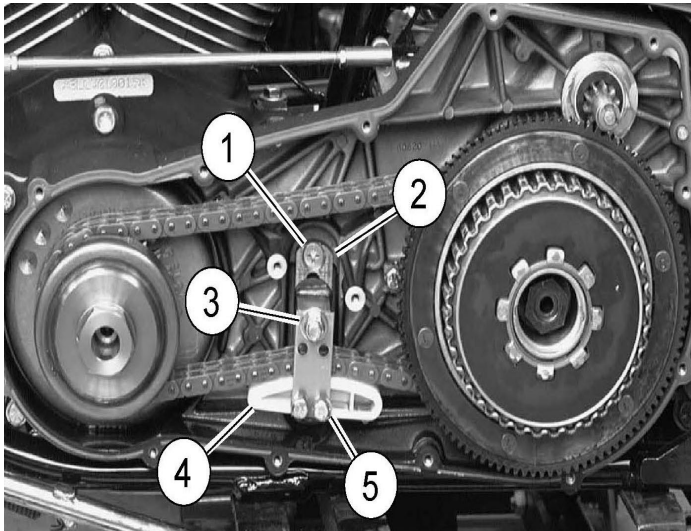
MAINTENANCE:

Removing the Automatic Primary Chain Tensioner for Service

1. Use a tie wrap and secure the shoe to the base of the Automatic Primary Chain Tensioner, without securing it to the Automatic Primary Chain Tensioner bracket. This will retain the Automatic Primary Chain Tensioner adjustment for re installation during service.
2. Remove two Automatic Primary Chain Tensioner hex screws, and Automatic Primary Chain Tensioner.

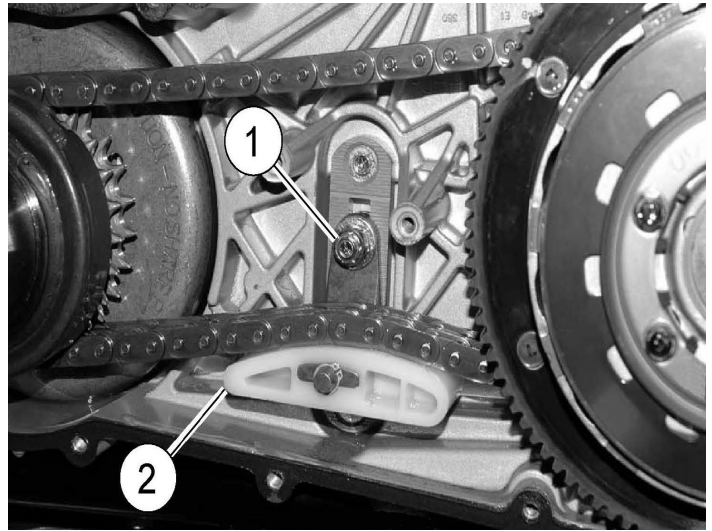
Resetting the Automatic Primary Chain Tensioner

1. Compress Automatic Primary Chain Tensioner wedge (1) and spring back to the base.
2. Hold wedge in position by inserting a hex wrench or pick tool through the hole in the base of the Automatic Primary Chain Tensioner.
3. Move plastic Automatic Primary Chain Tensioner shoe (1) into place as shown.
4. If available, install shipping plate (2) to secure the shoe to the base. If it is not available, secure the shoe to the base with a tie wrap.



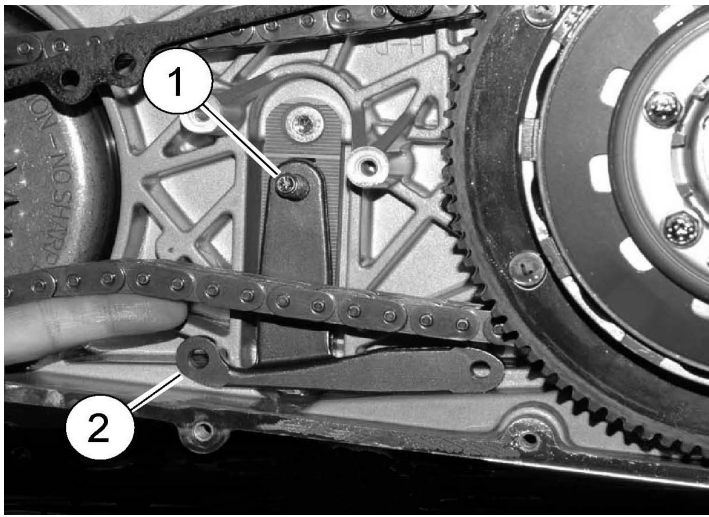
Manual Tensioner: 1985-2000 Models

1. Nut and washer
2. Automatic Primary Chain Tensioner
3. Hex screw (2)
4. Shipping plate

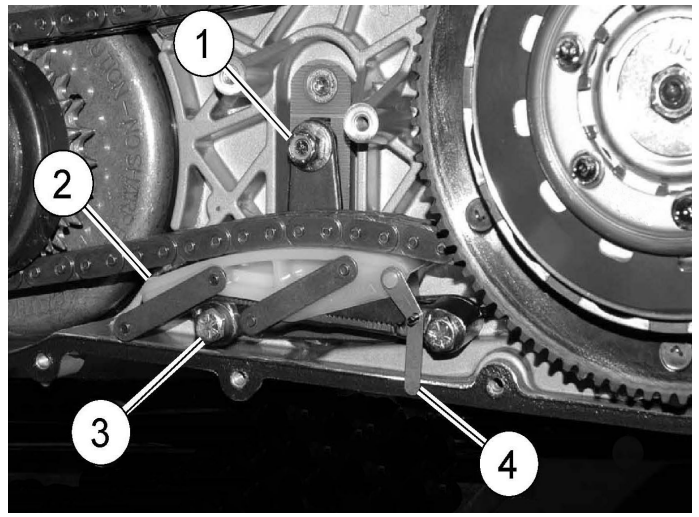


Manual Tensioner: 2001 and later models

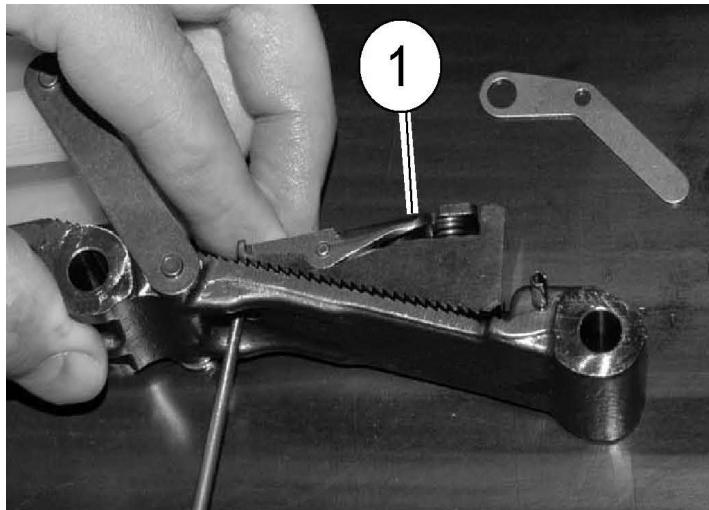
1. Nut and washer
2. Tensioner



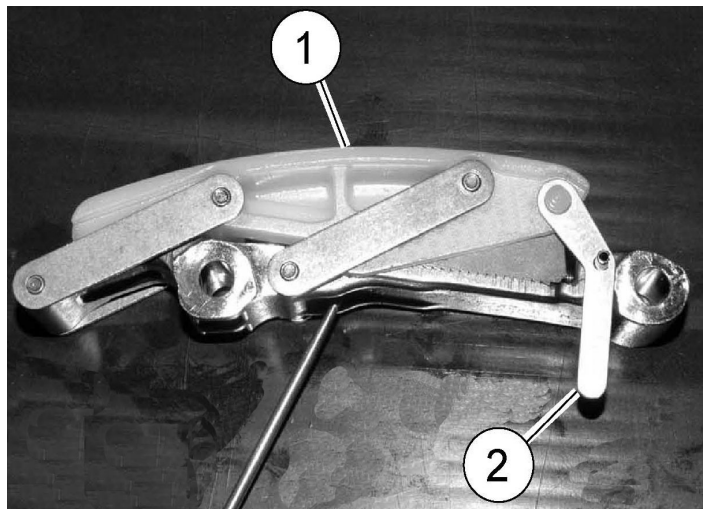
1. Carriage bolt
2. Automatic Primary Chain Tensioner Bracket



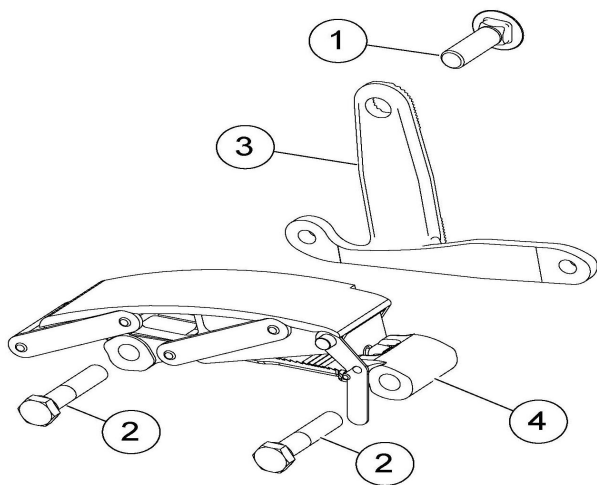
1. Nut and washer
2. Automatic Primary Chain Tensioner Bracket
3. Hex screw (2)
4. Shipping plate



1. Automatic Primary Chain Tensioner Bracket



1. Automatic Primary Chain Tensioner shoe
2. Shipping plate



Item	Description (Quantity)
1	Carriage bolt, 3/8-16 X 1-1/4 in. (use for 1985-2000 models only)
2	Screw, hex, 5/16-18 X 1-1/2 in. (2)
3	Bracket, Automatic Primary Chain Tensioner
4	Automatic Primary Chain Tensioner