

V-Twin Mfg.
Chrome Forward Control KIT, Chrome
Fits 1991-2005 FXD Models
VT No. 22-0509

This is a custom application and rider safety depends on proper installation. This product should only be installed by a knowledgeable and trained motorcycle technician. V-Twin Mfg. accepts no responsibility for improper installation.

Installation Instructions:

Left Side Shifter assembly:

1. Remove highway footrest assembly. Retain footrest and fasteners. Discard bracket, plate and mounting hardware.
2. Remove stock footrest assembly.
3. Remove stock (chrome) shift lever. Retain shift lever, peg, bolt and washer.
4. Bolt retainer bracket (1) to the stock shifter lever with bolt (2) and nut. Do not tighten bolt at this time. See figure 1.
5. Loosen the left rear crankcase bolt (at bottom of cylinder) and slide the slotted end of shifter lever shaft retainer bracket (1) sold separately, onto the bolt, under the washer. Tighten crankcase stud to 15 -17 ft-lbs torque. Tighten retainer bracket bolt.
6. Place chrome cover (3) sold separately, on shift lever shaft coming out of primary cover and secure with set screw (4).

NOTE: Small wave washer (5) goes between foot shifter and bracket.

7. Place small wave washer (5) on shifter lever (6) shaft. Coat shaft with Loctite Anti-seize and slide into bracket.
8. Install foot shift bracket (7) using button head torx screws (8). Tighten screws to 25- 30 ft-lbs torque.
9. Place shifter rod (9) in position. Use short stud (10) on shifter rod to secure shifter rod at the transmission end. Use loctite 242 (blue) on stud before installing.
10. Install acorn nut (11) at foot shift end. Use Loctite 242 (blue) on acorn nut before installing.
11. Install stock shift lever. Tighten retaining bolt.
12. Install stock highway footrest using retained fasteners.
13. Install black plugs (12) in stock footrest bracket mounting holes.

Right side - Rear Brake assembly

1. Remove highway footrest assembly. Retain footrest and fasteners and discard bracket, plate and mounting hardware.
2. Remove bolts from stock footrest assembly.
3. Loosen brake rod jam nut at master cylinder piston.

Note: Master cylinder piston has flats for a wrench. Turn the piston to unscrew the brake rod.

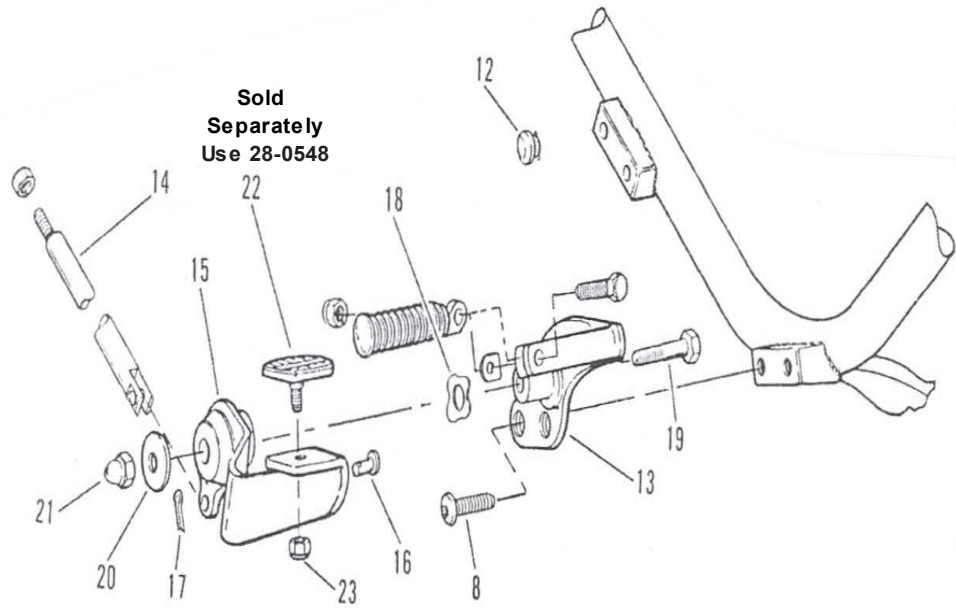
4. Unscrew master cylinder piston from stock brake rod. Remove stock brake rod, footrest mount and brake lever assembly. Retain the jam nut and discard the rest of the assembly.
5. Install brake pedal bracket (13) using the button head too screws (8). Tighten screws to 25-30 in-lbs torque.
6. Install jam nut on new brake rod (14). Install new brake rod in master cylinder piston. Do not adjust at this time.

Note: Be sure you install the staked clevis pin (16) from the inside. so cotter pin (16) is installed on the outside.

7. Connect brake pedal (15) and brake rod (14) using the staked clevis pin (16). Rap the pin with a hammer to sink the stakes. Install the cotter pin (17).
8. Place the large wave washer (18) on the brake pedal bracket shaft. Coat shaft with Loctite Anti-seize and place brake pedal on shaft.
9. Install bolt (19), chrome washer (20) and acorn nut (21). Tighten acorn nut to 17 - 20 ft-lbs torque.
10. Install stock highway footrest using retained fasteners.
11. Adjust brake pedal-to-bracket clearance by turning master cylinder piston until there is 7/16 in. clearance between brake pedal and bracket. Tighten jam nut.
12. Install brake pedal pad (22) sold separately.
13. Install black plugs (12) in stock footrest bracket mounting holes.

Parts list

Item#	Qty	Description	Item#	Qty	Description	Item#	Qty	Description
1	1	Shifter lever shaft retainer bracket Sold Separately Use 21-0766 for 1991-2005 Use 21-0768 for 2006-Up	11	1	Acorn nut	21	1	Acorn nut
2	1	Bolt	12	4	Hole Plugs	22	1	Brake pedal pad Sold Separately Use 28-0548
3	1	Shifter lever shaft cover Sold Separately Use 44-0047	13	1	Brake rod	23	1	Locknut
4	1	Shifter lever shaft cover set screw	14	1	Brake pedal bracket	24	1	Nut
5	1	Wave washer, small	15	1	Brake pedal			
6	1	Shifter lever	16	1	Brake Rod pin, Staked			
7	1	Shifter bracket	17	1	Cotter pin			
8	4	Button head torx screw	18	1	Wave washer			
9	1	Shifter Rod	19	1	Bolt			
10	-	NA	20	1	Chrome washer			



Stock shifter lever

