

V-Twin Mfg.
22-0721 Chrome Standard Forward Control Kit without Footpegs
22-0731 Chrome Standard Forward Control Kit with Footpegs
22-0733 Chrome 2" Extended Forward Control Kit with Footpegs
Fits 2004-2005 XL Models

This is a custom application and rider safety depends on proper installation. This product should only be installed by a knowledgeable and trained motorcycle technician. V-Twin Mfg. accepts no responsibility for improper installation.

Note: Installation of the forward controls will be easier if the exhaust is removed prior to starting installation.

Installation Instructions:

Removal of Standard Controls

Brake side

1. Use a T30 torx bit and remove the brake rod from the brake pedal and the master cylinder bell crank.
2. Remove the two hex socket screws that secure the footpeg support bracket to the frame.
3. Remove the footpeg, support bracket and brake pedal from the frame.
4. Remove the two hex socket bolts that secure the J-clip to the frame at the forward control mounting location.

Shifter Side

1. Remove pinch bolt from shift lever and remove shift lever from shaft. Be sure that the rubber spacer remains on the shift shaft.
2. Remove the footpeg support assembly from the frame and set aside.

INSTALLATION OF THE FORWARD CONTROLS

Brake side

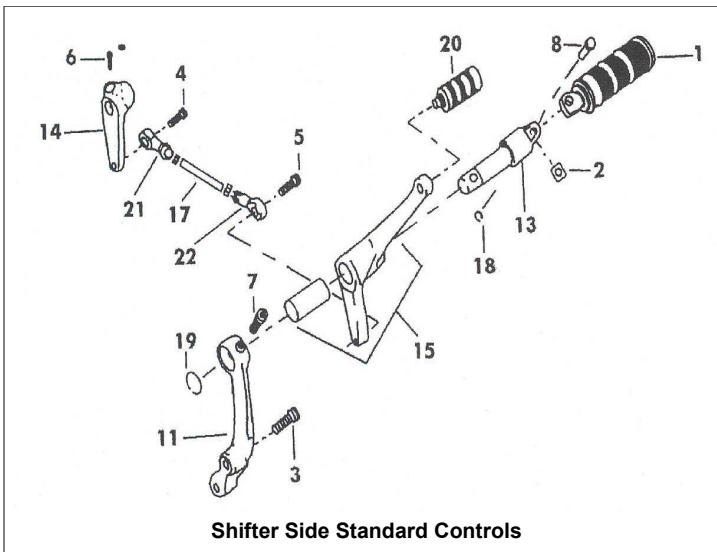
1. Position J-clip against frame and mount right footpeg support bracket (10) using two bolts (3). Tighten bolts (3) to 45-50 ft.-lbs.
2. Place brake lever (9) onto right-hand footpeg clevis (12).
3. Install right-hand footpeg clevis (12) into the footpeg support bracket (10), lining up the hole in the clevis with the hole in the footpeg support. Make sure that the recess in the clevis is towards the top. Secure with hex socket bolt (7) and external retaining ring (19). Tighten to 18-22 ft.-lbs.
4. Install footpeg (1) into footpeg clevis along with the "D" shaped spring washer (2). The spring washer should be installed with the flat side toward the motorcycle.
5. Install footpeg clevis pin (8) to secure the footpeg.
6. Install the footpeg clevis pin retaining ring (18) onto the footpeg clevis pin (8).
7. Install brake rod (16) into the brake lever (9) and the rear brake bell crank. Tighten both bolts to 120-180 in.-lbs.

Shifter side

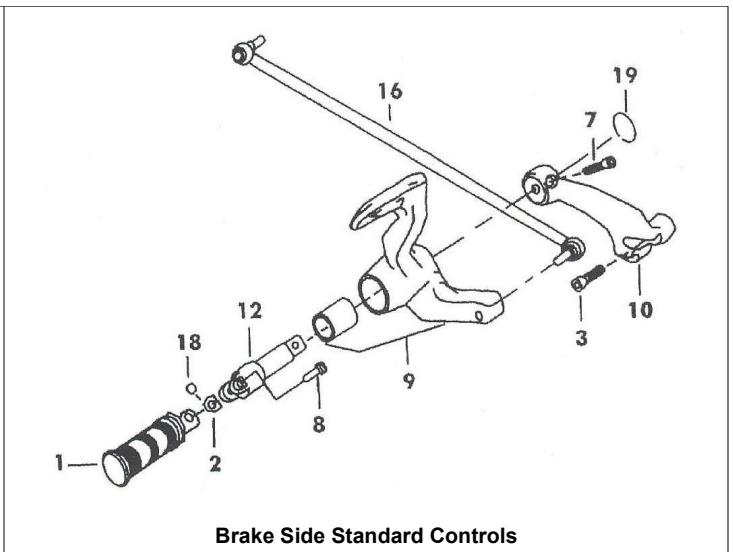
1. Install shift lever (14) onto transmission shifter shaft. Make sure that the lever is pointing straight down. The shift lever should be mounted so the flat side is in toward the motor. Also make sure that the rubber spacer is between the engine and the shift lever. Secure with bolt (6), tighten to 16-20 ft.-lb.
2. Install J-Clip and left-side footpeg support bracket (11) to frame with bolts (3). Tighten to 45-50 ft.-lb.

Note: If you are installing the standard length forward controls, skip step 3 and go directly to step 4. If you are installing the +2" forward controls, you must include step 3.

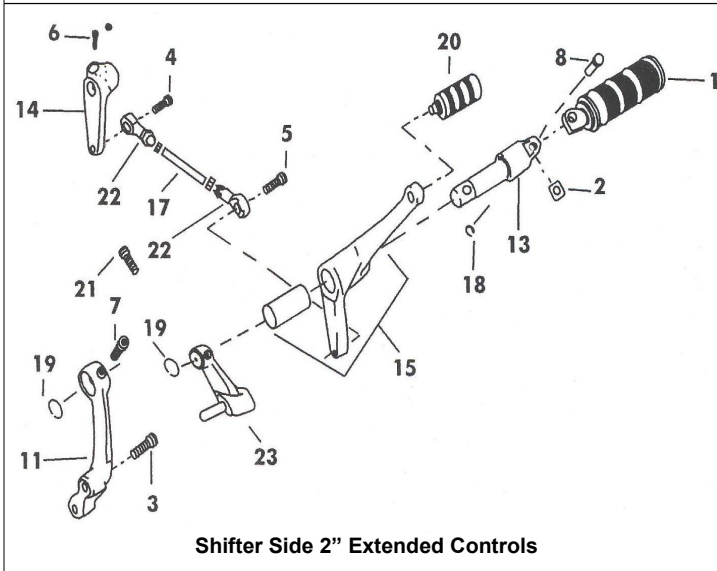
3. Install offset bracket mount (23) into footpeg support bracket (11). Line up the holes in both brackets and install bolt (7) and retaining ring (19). Tighten bolt to 18-22 ft.-lb.
4. Install shift lever (15) on footpeg clevis (13). Line up the hole in the footpeg clevis (13) with the hole in the offset bracket (23), making sure that the recess in the clevis is towards the top. Install the bolt (21) and retaining ring (19). Tighten bolt to 18-22 ft.-lb.
5. Install footpeg (1) into footpeg clevis along with the "D" shaped spring washer (2). The spring washer should be installed with the flat side toward the motorcycle.
6. Install footpeg clevis pin (8) to secure the footpeg. The pin should fit flush into the footpeg mount.
7. Install the footpeg clevis pin retaining ring (18) onto the footpeg clevis pin (8).
8. Install shift peg (20) onto the shift lever (15).
9. Install the two heim joints and nuts (22) onto the shifter rod (17). Tighten only finger tight at this time.
10. Install the shifter rod (17) to the transmission shift lever (14) with bolt (4). Tighten to 120-180 in.-lb.
11. Install the shifter rod (17) to the shift lever (15) with bolt (5). Also tighten this bolt to 120-180 in.-lb.



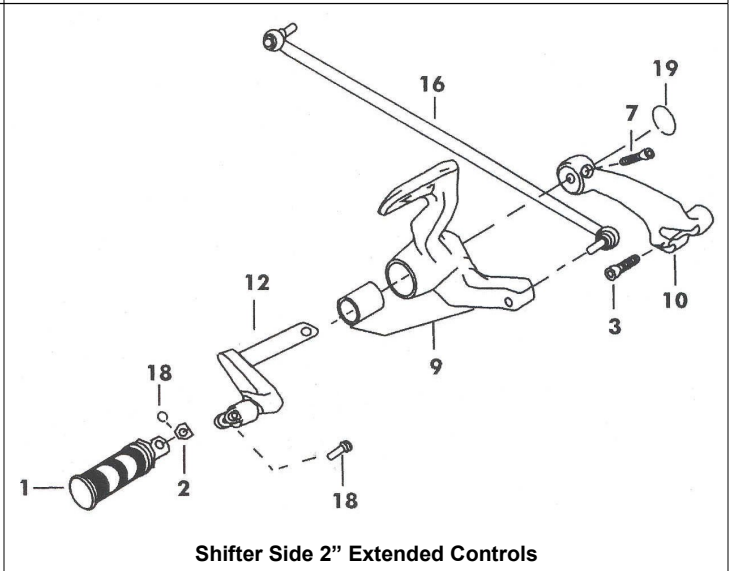
Shifter Side Standard Controls



Brake Side Standard Controls



Shifter Side 2" Extended Controls



Shifter Side 2" Extended Controls

Parts list Standard Controls

Item	Qty	Description
1	2	Footpegs 22-0731 Kit only
2	2	Washer, footpeg spring (2)
3	4	Screw, 3/8"-16 x 11/4" (4)
4	1	Screw, 5/16"-18 x 7/8"
5	1	Screw, hex but (lock) 5/16"-18 x 1"
6	1	Screw, hex soc 1/4"-18 x 3/4"
7	2	Screw, hex soc 5/16"-18 x 1/4" (2)
8	2	Pin, footpeg clevis (2)
9	1	Assembly, brake pedal
10	1	Bracket, right rider footpeg support
11	1	Bracket, left rider footpeg support
12	1	Clevis, footpeg, right
13	1	Clevis, footpeg, left
14	1	Lever, shift shaft arm
15	1	Assembly, shift lever
16	1	Assembly, brake rod
17	1	Shift rod
18	2	Ring, footpeg clevis pin retaining (2)
19	2	Ring, footrest mount clevis retaining (2)
20	1	Shift peg
21	-	N/A
22	2	Heim joint and nut (2)

Parts list Extended Controls

Item	Qty	Description
1	2	Footpegs
2	2	Washer, footpeg spring (2)
3	4	Screw, 3/8"-16 x 11/4" (4)
4	1	Screw, 5/16"-18 x 7/8"
5	1	Screw, hex but (lock) 5/16"-18 x 1"
6	1	Screw, hex soc 1/4"-18 x 3/4"
7	2	Screw, hex soc 5/16"-18 x 1/4" (2)
8	2	Pin, footpeg clevis (2)
9	1	Assembly, brake pedal
10	1	Bracket, right rider footpeg support
11	1	Bracket, left rider footpeg support
12	1	Clevis offset, footpeg mount, right
13	1	Clevis, footpeg, left
14	1	Lever, shift shaft arm
15	1	Assembly, shift lever
16	1	Assembly, brake rod
17	1	Shift rod
18	2	Ring, footpeg clevis pin retaining (2)
19	3	Ring, footrest mount clevis retaining (3)
20	1	Shift peg
21	1	Screw, hex soc 5/16"-18 x 1" (1)
22	2	Heim joint and nut (2)
23	1	Bracket offset mount, left rider footpeg support