

**V-Twin Mfg.
ADJUSTABLE FOOT PEG MOUNTS
VT No. 27-1523**

Fits most models with male mount style passenger footpeg supports, except ST models.

VT No. 27-1544

Fits passenger position on 2000 & later ST models

Will not fit FXSTD, FLSTSB, FLSTF, FLDTFB, FLSTN & models with Shotgun exhaust.

This is a custom application and rider safety depends on proper installation. This product should only be installed by a knowledgeable and trained motorcycle technician. V-Twin Mfg. accepts no responsibility for improper installation.

Installation Instructions:

1. Refer to figure 1 for proper placement of parts.
2. If installed, remove existing Foot Pegs. Save hardware for re-use. On ST Models remove the OEM Foot Peg supports.
3. On Kit 27-1544* (ST Models) Install the Foot Peg Support Brackets provider with kit (see figure 2). Torque bolts (#13) to 25-30 ft-lbs.
4. Assemble the Adjustable Mounts on the Motorcycle as shown (see figure 1 & 3).
5. Adjust the Foot peg. To desired hight and tighten hardware.

Note: It may be necessary to adjust the shock length to prevent swingarm from contacting the mount backplate (14).

WARNING: Foot Pegs must be positioned to fold up and rearwards if struck. Foot Peg position must not interfere with operation of motorcycle controls. Failure to properly position Foot Pegs could result in death or serious injury.

6. Torque the adjusting hardware (#5) and (#8) to 45-50 ft-lbs.

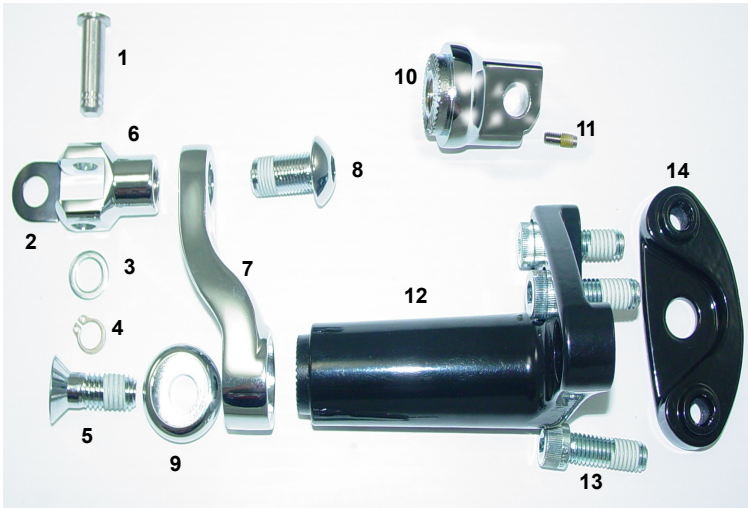


Figure 1



Figure 2



Figure 3

Parts List

Item	Description	Qty
1	Clevis pin	2
2	Spring washer	2
3	Washer	2
4	Retaining Ring	2
5	Torx cap screw	2
6	Clevis	2
7	Foot peg support	2
8	Button head screw	2
9	Serrated washer	2
10	Male serrated foot peg mount	2
11	Set screw	2
12	ST support brkts (27-1544 only)	2
13	Torx cap screw (27-1544 only)	6
14	Mount backplate (27-1544 only)	2