

V-Twin Mfg.
Chrome Switch Cover Sets

This is a custom application and rider safety depends on proper installation. This product should only be installed by a knowledgeable and trained motorcycle technician. V-Twin Mfg. accepts no responsibility for improper installation.

These kits contain complete sets of chrome switch caps for the left and right handlebar switches. These caps are direct replacements for the standard equipment black switch caps.

Kits	Fitments
32-0564	1996-Later FLHTCUI (Ultra Classic Electra Glide); 1998-Later FLTR (Road Glide)
32-0563	1996-Later FLHT (Electra Glide Standard); 1996-Later FLHTC (Electra Glide Classic)
32-0562	1996-Later XL; 1996-Later Dyna Glide; 1996-Later Softail; 1996-Later FLHR (Road King); 1998 to 2001 FLHRCI (Road King Classic)
32-0565	2002-Later FLHRCI (Road King Classic)
32-0581	1996-Later FLHT/FLHTC and 2006-Later FLHX equipped with Cruise Control*

* Original equipment (OE) or accessory cruise control.

Installation Instructions:

Removal:

1. Open or remove seat according to the instructions in the service manual.
2. Disconnect battery cables, negative (-) cable first or remove the main fuse.
3. Remove left and right side switch housing assemblies.

Note: It is not necessary to disconnect the switch wiring to replace the switch caps.

4. Remove individual switches from switch housing. Refer to your appropriate service manual for your model.

Installation:

Upper Housing Switches

1. For horn and start switch caps, release torsion spring leg from hole in switch cap tab. Take note of the spring orientation. The other leg of the spring can remain in the switch bracket hole.
2. Carefully pry stock black switch cap up off the splined actuator shaft (2) on left side of switch.
3. Pry the switch cap up and away from pivot pin (3) on right side of switch and remove cap.

Note: Use the clear protective cover film to protect the chrome surface of the switch caps during installation. Remove the film after the installation is complete.

4. Select proper chrome replacement switch cap from kit.
5. Place cap onto switch, angling the hole on right side over pivot pin (4) on switch.
6. Carefully press switch cap down onto splined actuator shaft (5), rocking and moving the cap until shaft snaps into place in splined hole.
7. For horn and start switch caps, insert torsion spring leg into hole in switch cap tab.
8. Toggle switch back and forth, checking for proper operation.

Turn Signal Switches

1. Carefully pry stock black switch cap up off the splined actuator shaft (2) on switch.
2. Pry the switch cap up and away from pivot pin (3) on switch, and remove cap.
3. Select proper chrome replacement switch cap from kit.
4. Place cap onto switch, angling the hole on top over pivot pin (4) on switch.
5. Carefully press switch cap onto splined actuator shaft (5), rocking and moving the cap until shaft snaps into place in splined hole.
6. Toggle switch back and forth, checking for proper operation.

Switch Cap Replacement

Notes: The switch cap removal tool is tapered on both ends to assist in the removal of the switch caps. As the tool is pushed under the switch cap, the tapered ends will slowly push the switch cap off of the switch pin. Do not use the switch cap removal tool as a pry bar. This will damage the switch cap and switch housing. The cruise control switch cap must be removed first before attempting to remove the mode select switch cap.

1. Use short end (4) of tool to remove cruise control switch cap (2). Push upwards under switch cap. The tool taper will slowly push the switch cap off switch pin.
2. Use long end of tool (1) and push tool straight and under mode switch cap until it is disengaged from switch pin (2) to remove mode select switch cap (3).
3. Pull stock black switch cap from switch shaft. If there is a metal clip in the old switch cap, insert copper clip from kit into new chrome cap.

4. Select proper chrome replacement switch cap from kit, then slide the cap onto the shaft.

Note: The cap will fit snugly to prevent the cap from loosening during regular operation.

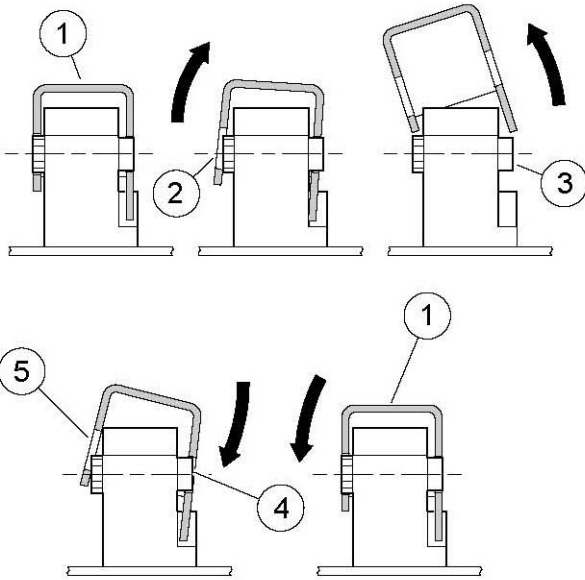
5. Toggle the switch back and forth, checking for proper operation.

Notes: The switch cap removal tool is tapered on both ends to assist in the removal of the switch caps. As you push the tool under the switch cap, the tapered ends will slowly push the switch cap off of the switch pin. Do not use the removal tool as a pry bar. This will damage the switch cap and switch housing. For FLHTCU and FLTR Models: The SQ-/PTT/SQ+ switch cap must be removed before attempting to remove the audio control switch cap.

6. Use short end (4) of tool (1) to remove the SQ-/PTT/SQ+ switch cap (2). Push upwards under switch cap. The tool taper will slowly push switch cap off switch pin.
7. Use long end (5) of tool (1) to remove the audio control switch cap (3).

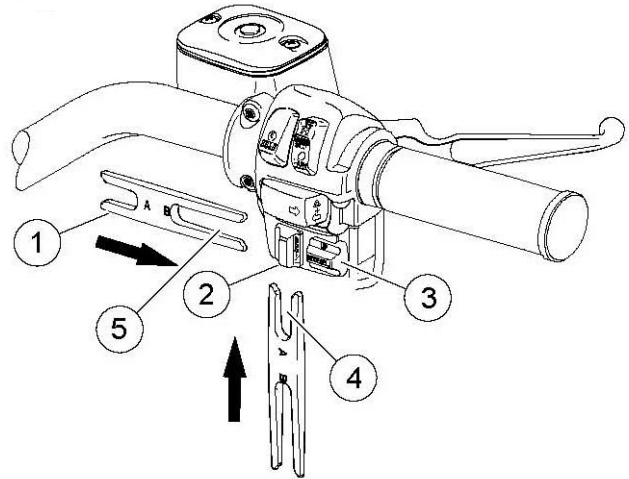
Assemble Switches

1. Assemble individual switches back into switch housings. Use care when installing switches to avoid damage.
2. Assemble left and right side switch housing assemblies. Remove and discard clear protective installation covers.
3. Connect battery cables, positive (+) cable first or install the main fuse.
4. Install seat according to the instructions in the service manual.
5. Test all the handlebar switches for proper operation.



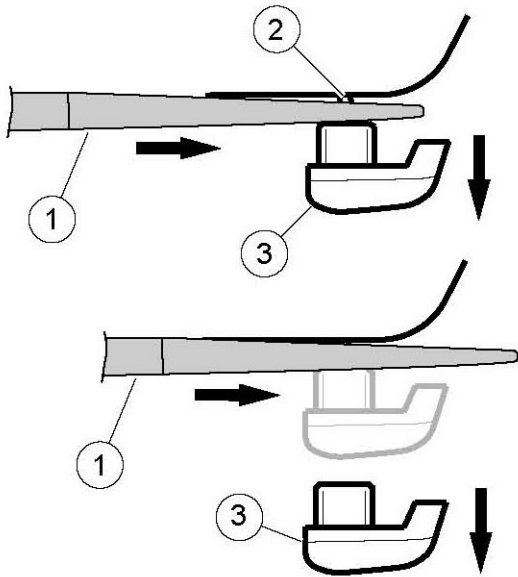
1. Switch cap installed correctly
2. Switch cap removal from splined shaft
3. Switch cap removal from pivot pin
4. Switch cap installation onto pivot pin
5. Switch cap installation onto splined shaft

Switch Cap Removal and Replacement



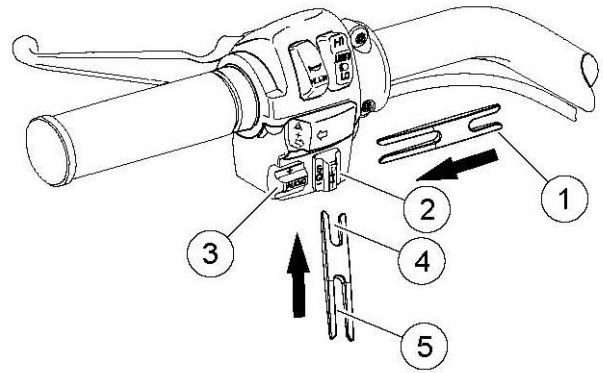
1. Switch cap removal tool
2. Cruise control switch
3. Mode select switch, UP/DOWN
4. Switch cap removal tool, short end
5. Switch cap removal tool, long end

Cruise Control and Mode Select Switch Caps



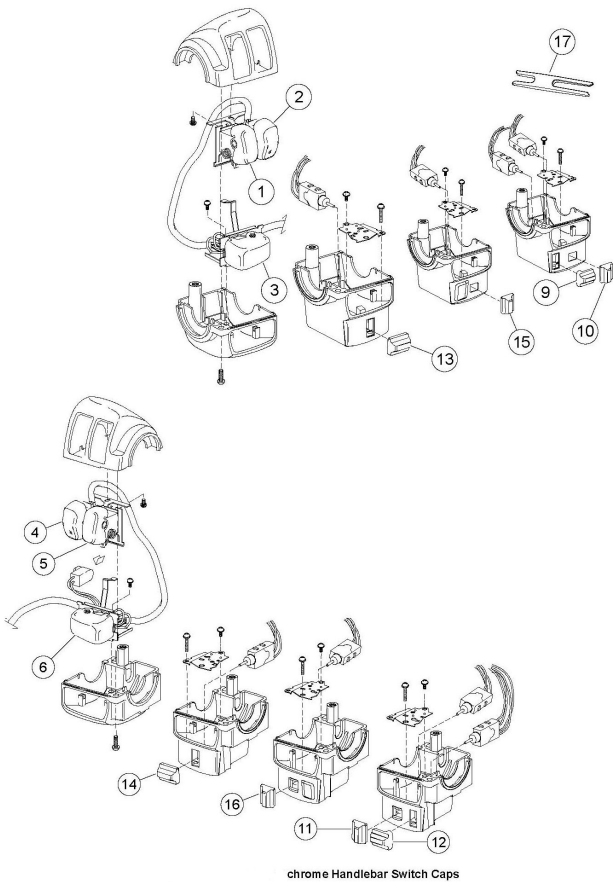
1. Switch cap removal tool
2. Switch pin
3. Mode select switch cap

Mode Select Switch Cap



1. Switch cap removal tool
2. SQ-/PTT/SQ+ switch
3. Audio control switch, (+)/(-)
4. Switch cap removal tool, short end
5. Switch cap removal tool, long end

SQ-/PTT/SQ+ and Audio Control Switch Caps



chrome Handlebar Switch Caps

Kit	Item	Description
Common Items for All Kits:		
	1	Switch cap, HORN (chrome)
	2	Switch cap, LIGHTS HI/LO (chrome)
	3	Switch cap, left turn arrow (chrome)
	4	Switch cap, START (chrome)
	5	Switch cap, OFF/ENGINE STOP/RUN (chrome)
	6	Switch cap, right turn arrow (chrome)
VT No. 32-0564 - Additional Contents:		
	9	Switch cap, AUDIO+/- (chrome) includes copper clip
	10	Switch cap, PTT/SQ-/SQ+ (chrome) includes copper clip
	11	Switch cap, RES/SET (chrome) includes copper clip
	12	Switch cap, MODE SEL UP/DN (chrome) includes copper clip
	17	Switch cap removal tool
VT No. 32-0563 - Additional Contents:		
	13	Switch cap, AUDIO +/- (chrome) includes copper clip
	14	Switch cap, MODE SEL UP/DN (chrome) includes copper clip
	17	Switch cap removal tool
VT No. 32-0562 - No additional items in kit.		
VT No. 32-0565 - Additional Contents:		
	15	Switch cap, RES/SET (chrome) includes copper clip
	16	Switch cap, CRUISE OFF/ON (chrome) includes copper clip
	17	Switch cap removal tool
VT No. 32-0581 - Additional Contents:		
	11	Switch cap, RES/SET (chrome) includes copper clip
	12	Switch cap, MODE SEL UP/DN (chrome) includes copper clip
	13	Switch cap, AUDIO +/- (chrome) includes copper clip
	17	Switch cap removal tool