

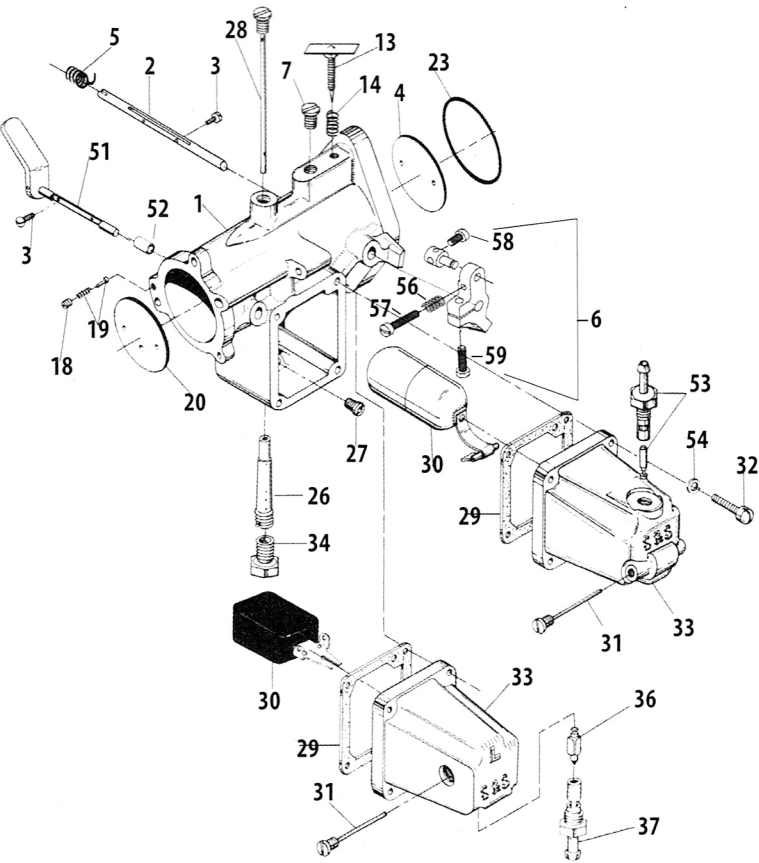
L-Series MGAL Gas Carburetor

Years Produced: 1977 to 1978

Size Produced: 1 7/8" throat

Identification Markings: Serial number stamped on body below "S&S Cycle" - "MGAL" cast on body above "S&S Cycle"

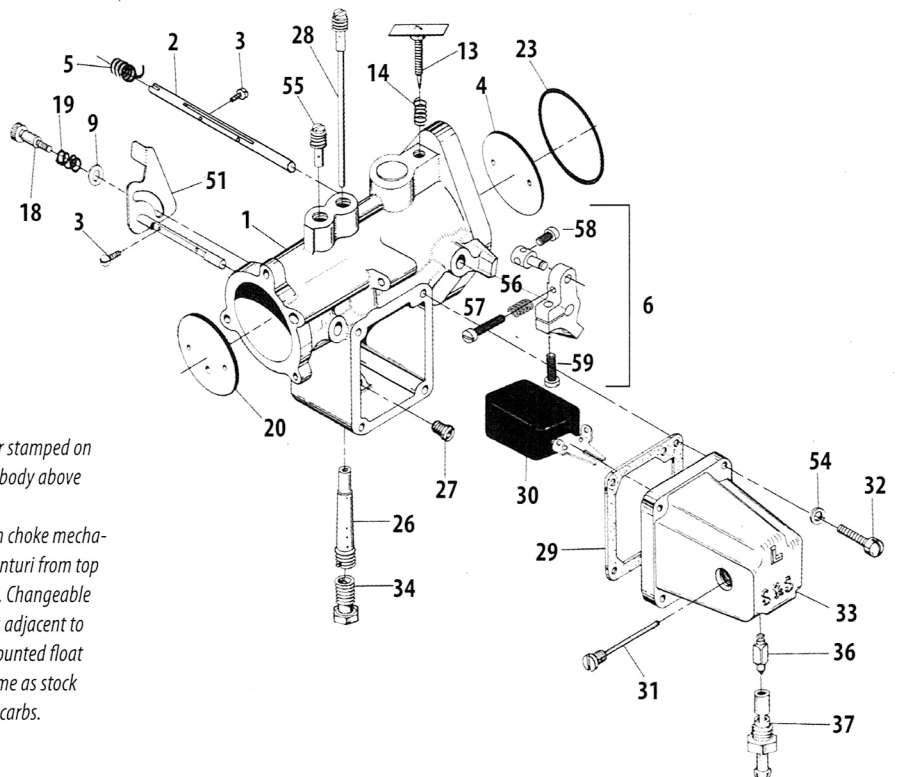
Distinguishing Characteristics: Built-in choke mechanism - intermediate jet goes through venturi from top of carb down into main discharge tube. Side mounted float bowl - bowl vent/throttle cable housing boss cast on body above float bowl. Air cleaner mounting pattern same as stock Tillotson, Bendix, Keihin butterfly type carbs.



35-0303 Intermediate Air Bleed Jet for MGL Model Only see #55

35-0663 Main Nozzle Discharge Tube see #26

35-0965 "L" Series Jet Kit see #27, #28, #34



L-Series MGL Gas Carburetor

Years Produced: 1980 to 1981

Size Produced: 1 7/8" throat

Identification Markings: Serial number stamped on body below "S&S Cycle" - "MG" cast on body above "S&S Cycle"

Distinguishing Characteristics: Built-in choke mechanism. Intermediate jet goes through venturi from top of carb down into main discharge tube. Changeable intermediate air bleed screws into boss adjacent to intermediate jet on top of carb. Side mounted float bowl. Air cleaner mounting pattern same as stock Tillotson, Bendix, Keihin butterfly type carbs.