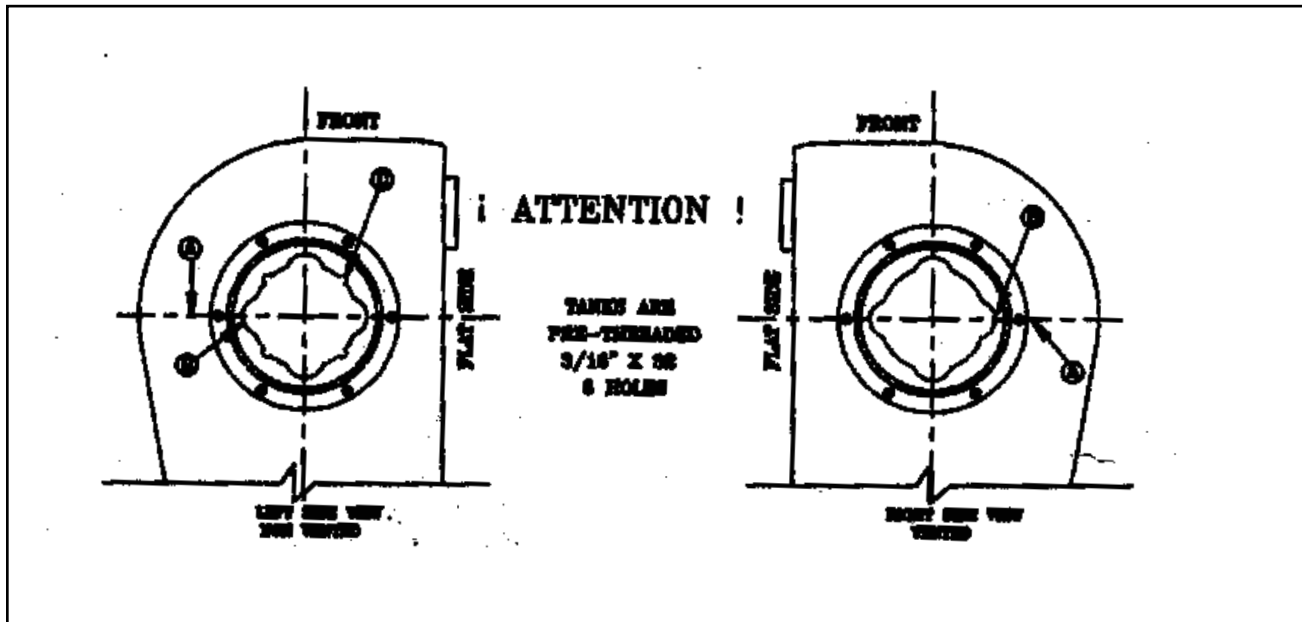


Instructions for Air Craft Cap Installation for VT No. 38-0337



Note: Some British caps come with Whitworth threads. Be sure to change to 3/16" x 32. RBE caps come with 6 3/16" x 32 screws.

1. Place a light film of silicone on both sides of gasket and line up the six holes. A light loctite seal is recommended on screws.
2. Install ring in left tank with the four small notches indicated by Letter C. Be sure large notch B & hole for screw is in line and horizontal with tank A as this is the non-vented side and sets the clocking of cap.
3. Install ring in right tank with no small notches. Be sure large notch 'B' is in line with screw hole, as indicated by letter 'A' horizontal with tank to clock cap.
4. It is recommended to fit tank to bike and a tank sealant used before painting. Also it is recommended not to grind on welds. Stretched tanks need a body filler at stretched end over welds. Re-fit tank to bike after work is completed. Before painting with seat installed.