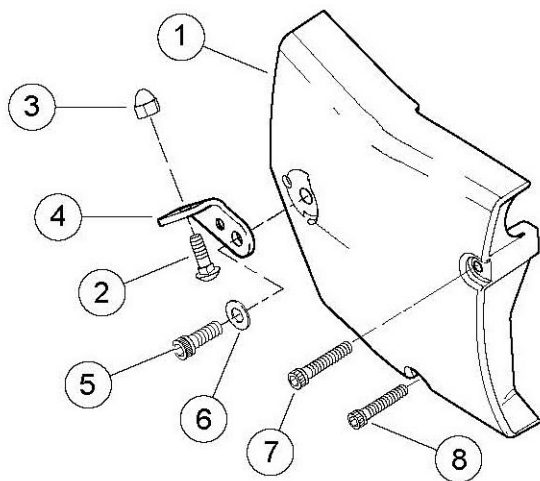


V-Twin Mfg.
CHROME TRANSMISSION SPROCKET COVER TRIM
FITS 2004-UP XL
VT Part No. 42-0930

This is a custom application and rider safety depends on proper installation. This product should only be installed by a knowledgeable and trained motorcycle technician. V-Twin Mfg. accepts no responsibility for improper installation.

Installation Instructions:

1. Remove and save the carriage bolt (2) and acorn nut (3) from the exhaust bracket clamp (4). Remove and discard the stock 3/8-16 bolt (5). Remove and save the washer (6). Discard the exhaust bracket clamp (4).
2. Remove and discard the 1/4-20 x 2-1/4 inch allen head bolt (7) and the 1/4-20 x 1-3/4 inch allen head bolt (8), keeping track of the hole location for the new screw length difference. Leave the original sprocket cover (1) in place.
3. Obtain the chrome sprocket trim cover and hardware from the kit. Position the chrome sprocket trim cover (1) over the original sprocket cover, being careful to match all the screw holes.
4. With the chrome sprocket trim cover (1) positioned close to the original sprocket cover complete the following Steps.
 1. Insert a longer chrome bolt (4) from the outside, through the upper right hole and through the chrome sprocket trim cover. Place a thinner spacer (5) over the threads.
 2. Using a 5/32 inch allen on the bolt head, grip one of the Nylon keeper washers (7) with a pliers. Install washer onto the screw until several threads extend from the washer, capturing the screw and spacer on the trim cover.
 3. Insert the short chrome bolt (3) from the outside, through the lower hole and through the chrome sprocket trim cover. Place a thicker spacer (6) over the threads.
 4. Thread a Nylon keeper washer (7) onto the threads as described in Step 6.
 5. Install and thread the screws of the chrome sprocket trim cover assembly into the existing matching threaded holes in the transmission case.
 6. Position the exhaust bracket in place on the trim cover, being careful to match the existing holes. Insert the 3/8- 16 button head bolt (8) through the 3/8 washer (C) saved in Step 1, exhaust bracket clamp (2), sprocket trim cover (1) and the original sprocket cover and into the threads of the transmission case. Tighten to 30-33 ft-lbs.
 7. Tighten the 1/4-20 button head bolt (3, 4) to 80-120 in lbs.
 8. Reinstall exhaust bracket to rear exhaust pipe with carriage bolt (A) and acorn nut (B) making sure exhaust bracket fits between the ends on the exhaust pipe clamp.
 9. Tighten rear exhaust pipe clamp nut (B) to 15-19 ft-lbs.



1. Sprocket cover
2. Carriage bolt
3. Acorn nut
4. Exhaust bracket pipe clamp
5. Socket head screw
6. Washer
7. Socket head screw
8. Socket head screw

Figure 1

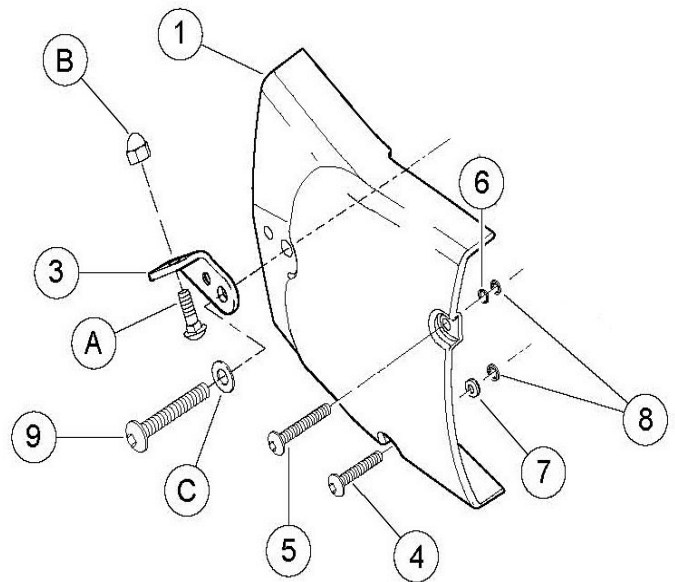


Figure 2