

BAR & SHIELD WINDSHIELD MOULDING

Kit Contents

Table 1. Kit Contents

Quantity	Description
3	Washers, rubber
3	Washers, stainless
3	Screws, 1/4-20 x .625
1	Trim, windshield

INSTALLATION

1. See Figure 1. Remove the three original equipment (OE) screws in the locations shown.

NOTICE

Over tightening windshield fasteners can crack windshield and/or fairing.

NOTE

Properly align the trim piece, fairing, windshield and brass insert before starting screws to prevent damage to the brass inserts due to cross-threading.

2. Install windshield trim (4) with rubber washer (1), stainless washer (2) and screws (3) from the kit in same locations as OE screws as shown. The rubber washers (1) must be between the trim (4) and the fairing as shown. Start the center screw first, then start the two end screws. Center the windshield trim ends with the end of the fairing. Tighten

center screw to 8-13 in-lbs (0.9-1.4 Nm), then tighten the two end screws to 8-13 in-lbs (0.9-1.4 Nm). Do not over tighten screws.

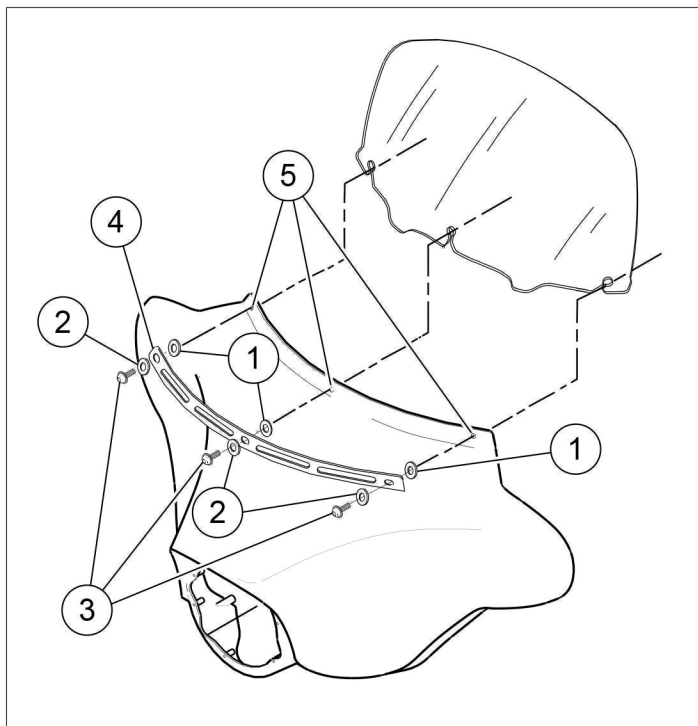


Figure 1. Service Parts

Table 2. Service Parts

Item	Description (Quantity)	Part Number
1	Washer, rubber (3)	57765-99
2	Washer, stainless (3)	6383
3	Screw, 1/4-20 x .625 (3)	94676-99
4	Trim, windshield	Not sold separately
5	Remove OE screws from these locations	