

## CHROME BUMPER AND FIN KIT

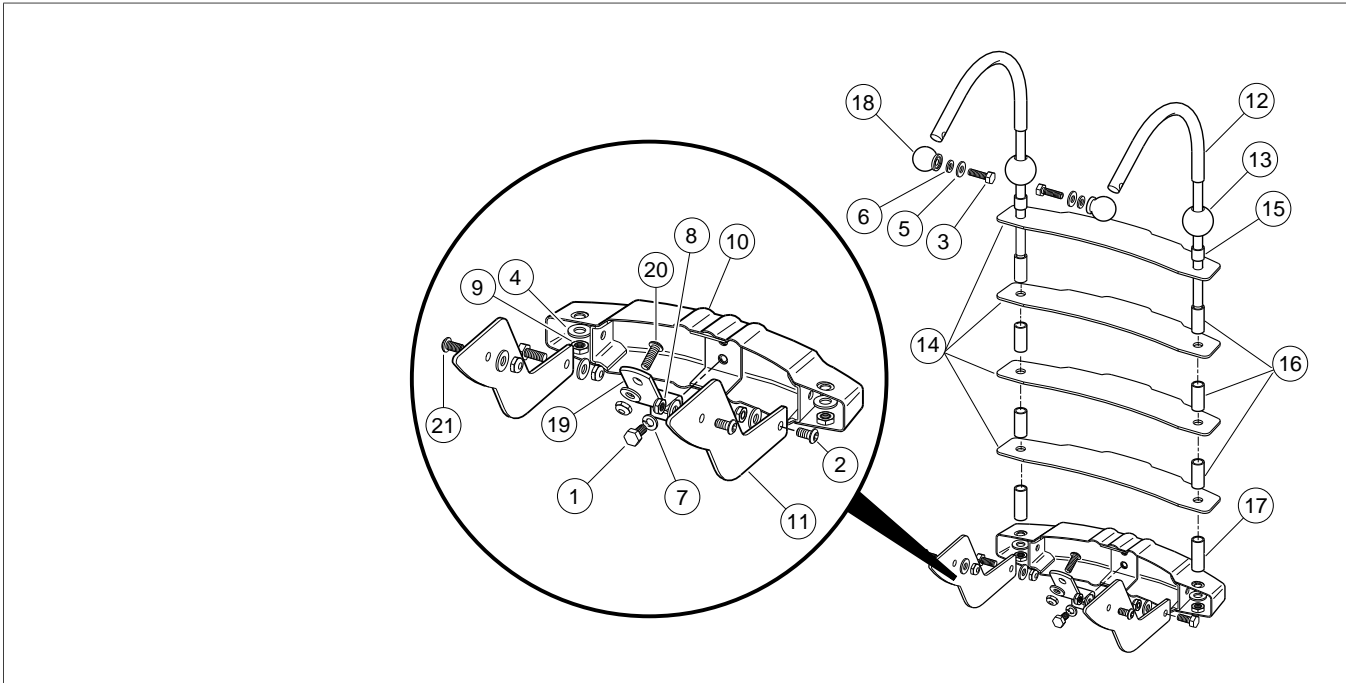
### INSTALLATION



Figure 1. Installed Chrome Bumper and Fin Kit

1. Lift motorcycle off ground and remove rear wheel.
2. See Figure 2. Attach fender plates to pre-assembled kit as follows:
  - a. Place fender plates (11) on outboard surface of bumper and align holes in fender plates with holes in the rear fender bumper brackets.
  - b. Insert screws (2) as shown in Figure 2 and fasten with washers (5) and nylon locknuts (8).
  - c. Tighten locknuts to 10 ft-lbs (13.5 Nm).
3. See Figure 2. Assemble center strap (19) to rear bumper (10) using the helical spring washer (7) and 1/4-20 x 1/3 inch hex cap screw (1). Tighten screw to 10 ft-lbs (13.5 Nm).
4. Drill holes for center strap as follows:
  - a. Using a high quality masking tape, mask the lower three inches of the middle of the rear fender for the purpose of drawing a centerline on the fender.
  - b. Use a machinist's square to locate the vertical centerline of the fender by measuring in from each side of the fender flats. Mark centerline on masking tape applied in Step 4a.
  - c. Measure up one inch from lower edge of fender along the center line, mark location on the tape and prick punch.
  - d. Carefully drill mounting hole in marked location. Start with a 1/16 inch drill bit and finish with a 17/64 inch drill bit.
5. Drill holes for fender plates and stanchions as follows:
  - a. Using a high quality masking tape, mask fender where fender plates (11) and stanchions (18) will meet fender when kit is installed.
  - b. Hang assembled kit from rear fender by placing center strap **inside** fender and aligning hole in center strap with hole drilled in Step 4d.
  - c. Insert 1/4-20 x 3/4 inch screw (20) through outside of fender and use washer (5) and locknut on inside of center strap (8). Tighten locknut to 10 ft-lbs (13.5 Nm).
  - d. Have an assistant hold the assembled kit so that the fender plate's (11) lower contour is parallel to the fender contour with approximately a 3/16 inch offset. The upper straight edge of the fender plates should be parallel to the ground and fins.
  - e. Carefully drill mounting holes in marked locations. Start with a 1/16 inch drill and finish with a 17/64 inch drill bit.
6. Apply a drop of Loctite® 243 (blue) to 1/4-20 x 7/8 inch hex cap screws (3).

7. Place a nylon washer (6) in the recess of each stanchion.
8. Line up stanchions to fit over holes drilled in Step 5e. Place washers (5) on screws (3). Insert screws through fender and stanchions and thread into bumper rails. Tighten screws to 10 ft-lbs (13.5 Nm).
9. Align fender plate holes with holes drilled in Step 5e. Insert screw (21) through hole and use washer (5) and nylon locknut (8) on inside of fender. Tighten locknut to 10 ft-lbs (13.5 Nm).
10. Reinstall rear wheel according to Service Manual instructions.



**Figure 2. Service Parts: Chrome Bumper and Fin Kit**

**Table 1. Service Parts: Chrome Bumper and Fin Kit**

Item	Description (Quantity)	Part Number	Item	Description (Quantity)	Part Number
1	Screw, hex cap, 1/4-20 x 1/2 in.	3728	12	Rail, bumper (2)	91238-97
2	Screw, button head, 1/4-20 x 5/8 in. (2)	924	13	Ball (2)	91239-97
3	Screw, hex cap, 1/4-20 x 7/8 in. (2)	3802W	14	Fin (4)	91240-97
4	Washer, plain 5/16 in. narrow (2)	6702	15	Spacer, top	91241-97
5	Washer, plain 1/4 in. narrow (7)	6703	16	Spacer, center (6)	91242-97
6	Washer, nylon, 1/4 in. (2)	7017	17	Spacer, bottom (2)	91243-97
7	Lock washer, helical spring, 1/4 in.	7036	18	Stanchion (2)	91224-97
8	Locknut, nylon 1/4-20 (5)	7671	19	Strap, center	91245-97
9	Locknut, nylon 6/16-18 (2)	7710W	20	Screw, button head, 1/4-20 x 3/4 in.	94386-92T
10	Bumper, rear fender	91236-97	21	Screw, button head, 1/4-20 x 1/2 in. (2)	94407-94T
11	Plate, fender (2)	91237-97			