

V-Twin Mfg.
OE Chrome Windshield Deflectors
VT Part No. 50-1067

This is a custom application and rider safety depends on proper installation. This product should only be installed by a knowledgeable and trained motorcycle technician. V-Twin Mfg. accepts no responsibility for improper installation.

This Wind Deflectors are designed to fit 1986 and later FLSTC, FLST, FLSTF and FLSTN models equipped with a windshield and/or passing lamps. If your FLST, FLSTC, FLSTF or FLSTN is equipped with a windshield but not a passing lamp assembly, you will need two washers 5/16" x 1" x 1/8". These washers will be used as spacers for the bottom of the deflector.

Installation Instructions:

1. On Rigid Mount Windshields, remove the bolts (1), lockwashers (2), and flat washers (3) securing one side of the windshield support bracket. Save all hardware for re installation.

Note: On Rigid Mount Windshields, be sure the large spacer (4) between the tip of the windshield support bracket and the fork stays in position. On Detachable Windshields, remove the bolts (1) and flat washers (2) securing one side of the windshield support bracket. Save all hardware for re installation.

2. Place the wind deflector in position and install the hardware removed in Step 1. Do not tighten the bolt at this time.

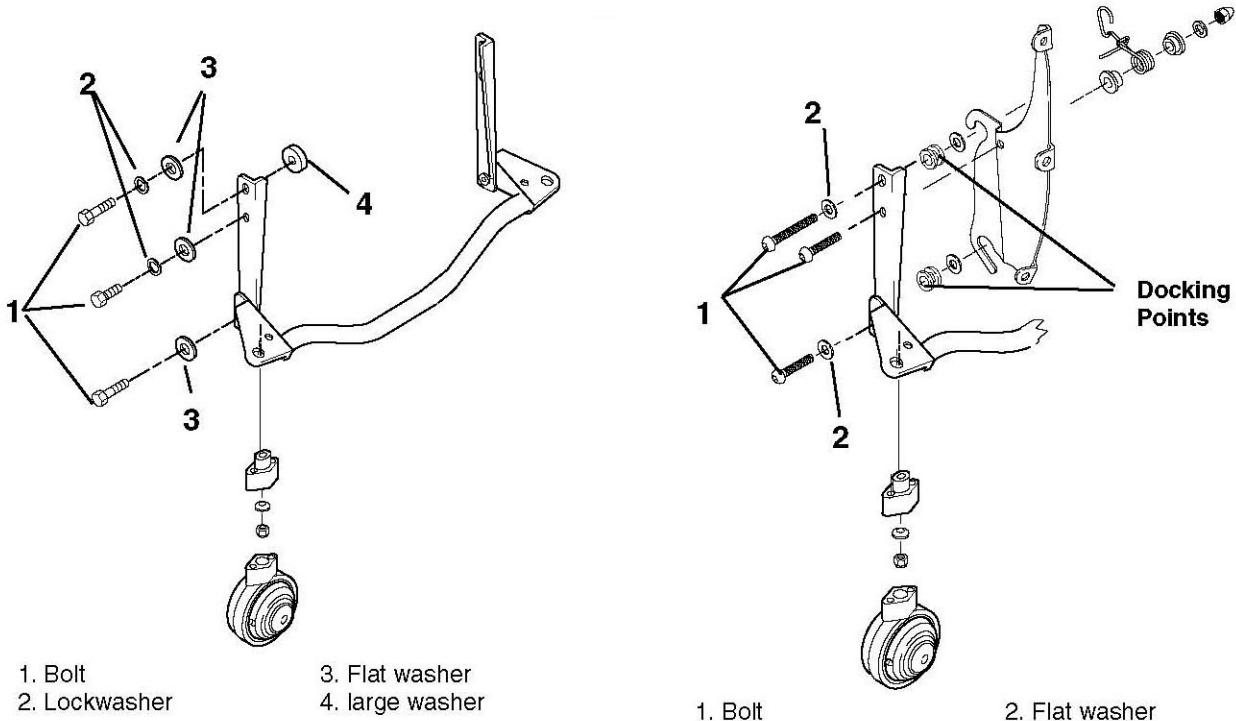
Note: On Rigid Mount Windshields, be sure you install the large spacer between the windshield support bracket and the fork.

Note: On 2000 and later models, be sure the wind deflector is outside of the windshield docking points.

3. Position the wind deflector parallel with the fork leg and install the other flat washers, lockwashers and bolts. Do not tighten the bolts at this time.

Note: If you have a motorcycle equipped with a windshield, but no passing lamps assembly, use the 5/16" x 1" x 1/8" washer to space the deflector away from the fork leg.

4. Position the wind deflector so it does not touch the bottom of the windshield or the turn signal. The deflector bolt holes are slotted for this purpose.
5. When the deflector is correctly positioned, tighten the bolts to 17 ft-lbs.
6. Repeat steps 1-5 for the opposite side of the motorcycle.



VT No. 50-1067

HERITAGE SOFTAIL WIND DEFLECTORS

General

This kit is designed for 1986 and later FLSTC, FLST, FLSTF and FLSTN model motorcycles equipped with a windshield and and/or passing lamps.

If your FLST, FLSTC, FLSTF or FLSTN is equipped with a windshield but not a passing lamp assembly, you will need two washers 5/16 x 1 x 1/8 in. (HD Part Number 6645). These washers will be used as spacers for the bottom of the deflector.

Installation

1. See Figures 1 and 2.

On Rigid Mount Windshields, remove the bolts (1), lockwashers (2), and flat washers (3) securing one side of the windshield support bracket. Save all hardware for reinstallation.

NOTE

On Rigid Mount Windshields, be sure the large spacer (4) between the tip of the windshield support bracket and the fork stays in position.

On Detachable Windshields, remove the bolts (1) and flat washers (2) securing one side of the windshield support bracket. Save all hardware for reinstallation.

2. Place the wind deflector in position and install the hardware removed in Step 1. Do not tighten the bolt at this time.

NOTE

On Rigid Mount Windshields, be sure you install the large spacer between the windshield support bracket and the fork.

NOTE

On 2000 and later models, be sure the wind deflector is outside of the windshield docking points.

3. Position the wind deflector parallel with the fork leg and install the other flat washers, lockwashers and bolts. Do not tighten the bolts at this time.

NOTE

If you have a motorcycle equipped with a windshield, but no passing lamps assembly, use the washer to space the deflector away from the fork leg.

4. Position the wind deflector so it does not touch the bottom of the windshield or the turn signal. The deflector bolt holes are slotted for this purpose.
5. When the deflector is correctly positioned, tighten the bolts to 17 ft-lbs (23 Nm).
6. Repeat steps 1-5 for the opposite side of the vehicle.

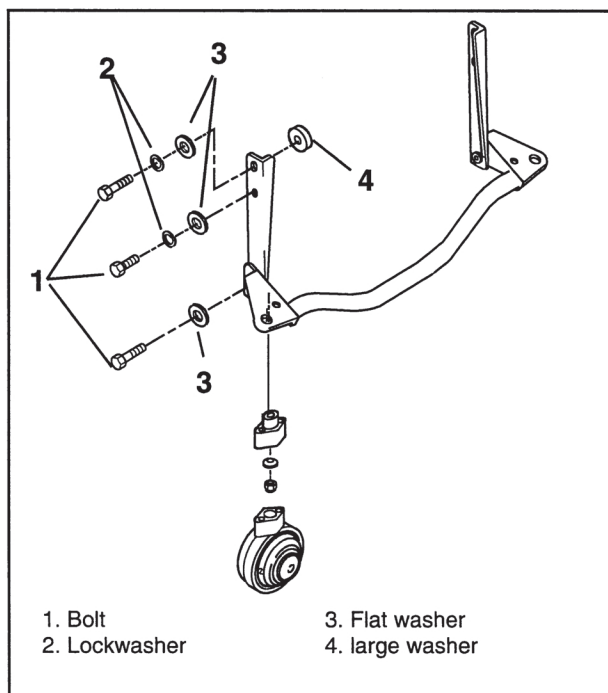


Figure 1. Assembly with Rigid Mount Windshields

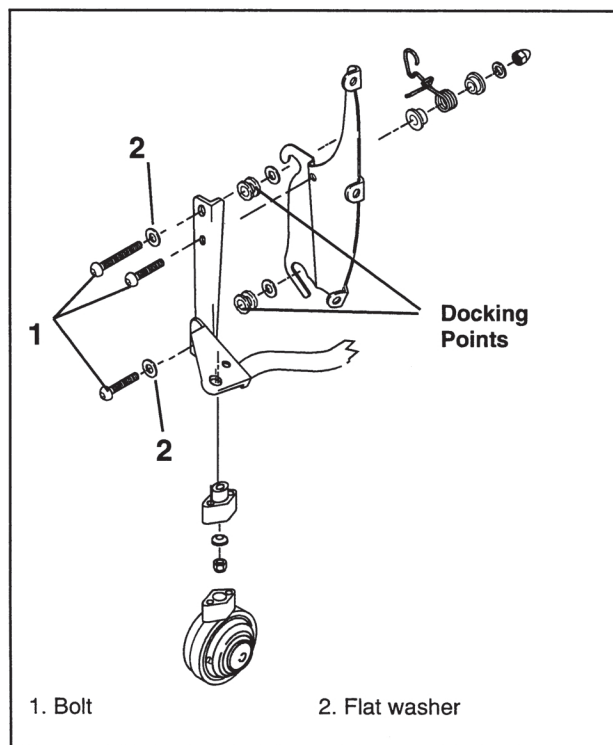


Figure 2. Assembly with Detachable Windshield