

COMFORT PROFILE REAR SADDLEBAG GUARD KIT VT No. 51-1063 and 51-1064

NOTE

This instruction sheet references service manual information. A service manual for your model motorcycle is required for this installation and is available from a dealer.

Kit Contents

See Figure 3 and Table 1.

REMOVAL

1. Remove saddlebags from motorcycle following the instructions in the service manual.
2. See Figure 3. Remove grab strap screw and washer (G). Remove grab strap (H). Remove seat following the instructions in the service manual.
3. If equipped, remove seat bumper (CC) and screw (BB).
4. Remove left and right side covers (located in front of saddlebags) by removing screw from bottom of side cover. Save hardware and side covers for final assembly.
5. Support muffler assembly with a block of wood or other suitable method.

For FLHTCU and FLHTC Models

1. Remove and discard screws (X) and guard rail mounts (W and V).
2. Remove screw (Q) and rear guards (U). Discard rear guard assembly including screws (T) and clamps (R and S). Discard screw (Q).
3. Remove and discard screw (K) and nut (L).
4. Remove screws (N and C) and nut (E). Save screw (C) for installation. Discard nut (E), screw (N) and forward guard.
5. Repeat Steps 1 through 5 for other side.

For All Other Models

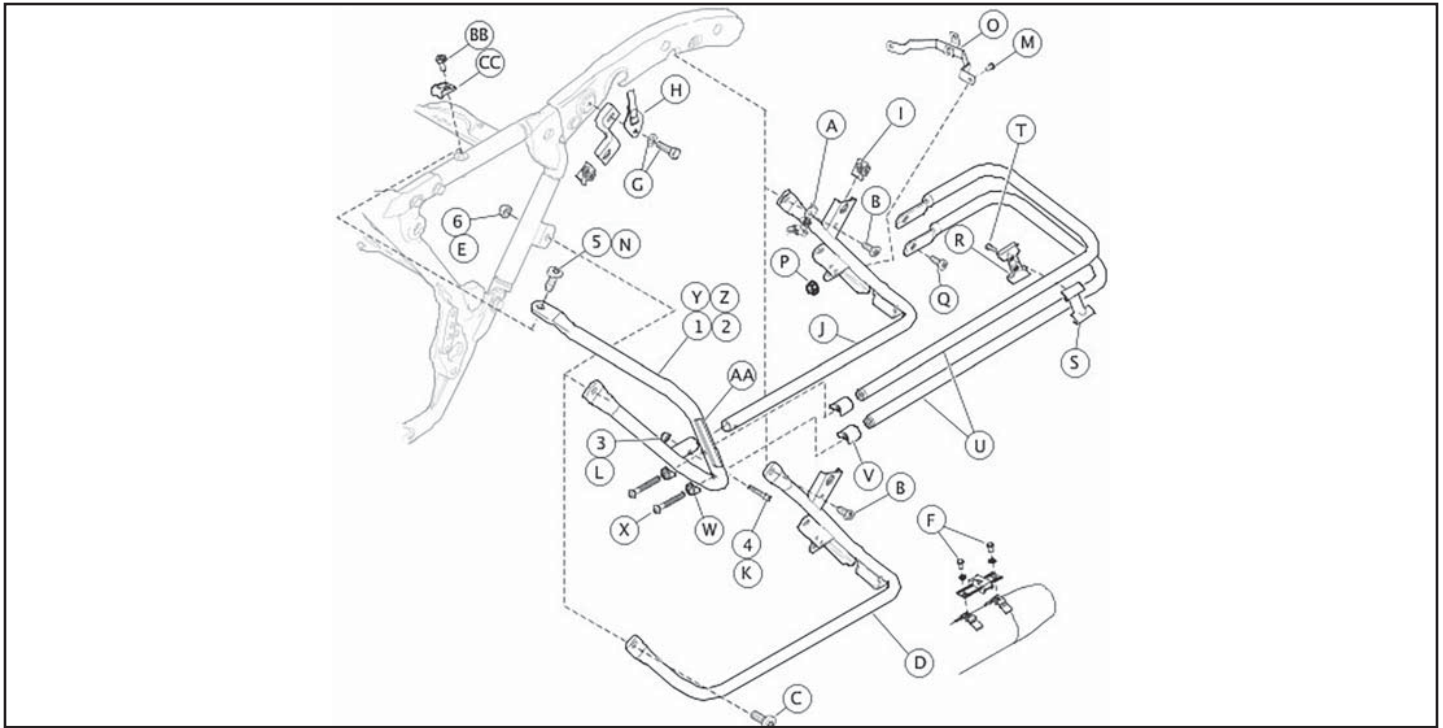
1. Remove screws (N and C) and nut (E). Save screw (C) for installation. Discard nut (E) and screw (N).
2. Remove and discard screw (K) and nut (L).
3. Remove forward guard and discard.
4. Repeat for other side.

INSTALLATION

1. Install new forward saddlebag guard (1 or 2) onto saddlebag support (J).
2. Install screw (4) and nut (3). Tighten finger-tight.
3. Secure forward saddlebag guard with upper bolt (5) and lower bolt (C) with nut (6). Tighten finger-tight.
4. Tighten the forward guard upper screw (5) to 43–49 N·m (32–36 lb.ft.).
5. Tighten the lower screw (C) and nut (6) to 43–49 N·m (32–36 lb.ft.).
6. Tighten saddlebag support screw (4) and nut (3) to 8–11 N·m (70–100 in.lb.).
7. Repeat all steps for opposite side of vehicle.
8. Install seat and grab strap (H). Tighten grab strap screw (G) to 16.3–20.3 N·m (12–15 lb.ft.).
9. Install left and right side covers with original hardware.
10. Install saddlebags with the original hardware following the instructions in the service manual.

WARNING

Front and/or rear guard(s) can provide limited leg and cosmetic vehicle protection under unique circumstances. (Fall over while stopped, very slow speed slide.) It is not made or intended to provide protection from bodily injury in a collision with another vehicle or any other object.



SERVICE PARTS

Figure 3. Service Parts: Saddlebag Guard Kit (Left Side Shown)

Table 1. Service Parts Table

Item	Description (Quantity)
1	Forward guard, left
2	Forward guard, right
3	Locknut, 1/4-20
4	Screw, 1/4-20
5	Screw, TORX
6	Locknut, 3/8-16

Items mentioned in text, but not included in kit:

A	Air suspension mounting bracket
B	Rear saddlebag support mounting screw
C	Lower saddlebag guard screw
D	Saddlebag support
E	Lower saddlebag guard nut
F	Muffler screw (2)
G	Grab strap mounting hardware
H	Grab strap
I	Stud receptacle
J	Saddlebag support (separate purchase for FLTR, FLHX and FLTRSE3)
K	Stock screw
L	Stock nut
M	Stock screw
N	Stock screw
O	Stock fender bracket
P	Nut (separate purchase for FLTR and FLHX)
Q	Screw, 0.312-18 x 0.63 inch (4)
R	Inner clamp (2)
S	Outer clamp (2)
T	Screw, #10-24 x 0.50 inch TORX (4)
U	Rear guard (4)
V	Guard rail mounts, rear (4)
W	Guard rail mounts, front (4)
X	Screw, hex cap (4)
Y	Forward guard, left
Z	Forward guard, right
AA	Reflectors (separate purchase for FLHRC)
BB	Screw (2)
CC	Seat bumper (2)