



Chopper Gas Tank



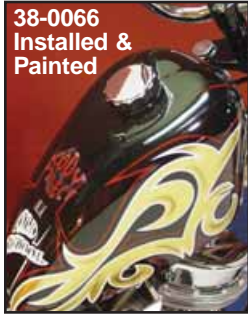
38-0066



38-0098

Universal Tanks available in 3.1 or 2.5 gallon capacity with front and rear mounting tabs.

VT No.	Type	Size
38-0066	2.5	Stock
38-0098	3.1	King



38-0066
Installed &
Painted



Built Spring
2003

38-0066 Shown Installed on Old School Chopper



38-0826



38-0825



38-0827



38-0828

Bobber Tanks are 2.4 gallon and feature 4 bolt mount strap system to be welded on to frame. Use mount kit 38-0214 included with tanks.

VT No.	Style	Side	Note
38-0825	Bung	Smooth	Order Cap Separate
38-0826	Bung	Indented	Order Cap Separate
38-0827	Pop Up	Smooth	Includes Special Cap
38-0828	Pop Up	Indented	Includes Special Cap

Weld In Pieces



40-1255



38-0206



38-0221



38-0309

Gas Tank Pieces can be welded on stock & aftermarket pieces.

VT No.	Item
40-1255	Filler Neck, Bayonet
38-0206	Filler Neck, Late Bung type, right and left, pair
38-0221	Petcock Fitting, male, 1975-up
38-0309	Petcock Fitting, female 3/8 NPT



Weld On Mount Spool with 5/16 x 24 thread.
VT No. 51-0588



38-0221



38-0309

Weld In Petcock Inserts.
VT No. Type Thread
38-0221 Male 1975-up
38-0309 Female 3/8 NPT



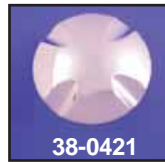
Weld-On Bracket Set Includes bushings and steel sleeves.
VT No. 51-0631



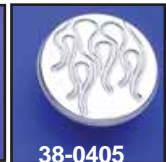
Flush Tank Mount Kit can be welded to flat bottom tank for clean look.
VT No. 38-0236



38-0402



38-0421



38-0405



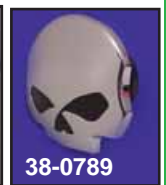
38-0423



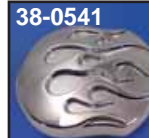
38-7001



38-0789
Installed



38-0789



38-0757

38-0541

Tanks listed on this page accept bung style vented cap.

VT No.	Style	VT No.	Style
38-0402	Pop-Up	38-7001	Eagle Spirit
38-0421	Cross	38-0789	Skull
38-0405	Flame	38-0541	Flame
38-0423	Maltese		



Iso Mount Strap Set fits 38-0196, 38-0187, 38-0197 tanks.
VT No. 38-0214