



LEATHER Buddy



FRINGE

47-0521



47-0523 Installed
SPEEDWING



47-0536 Shown



47-0523



47-0523

Original Buddy Seat is a replica of 1940's reproduced by Corbin-Gentry, features stamped & formed steel replica baseplate with all brackets riveted in place. Foam is molded in a smooth contour and is covered with heavy top grade cowhide. Seams are factory style which is accomplished by riveting a leather strip to seat pan, then form fitting the leather top cover in place, finally sewing the top cover to the leather strip for the original look. Accessorized skirt with 1 hole on each side with rosettes, accepts VT No. 31-0507 chrome hand rail.

VT No.	Color	Skirt
47-0536	Black	3 piece Note: Includes hand rail
47-0232	Black	3 piece
47-0520	White	3 piece

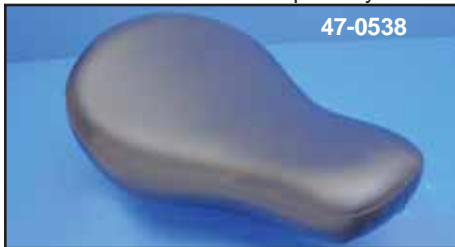
Original Buddy Seats available with Fringe or Speedwing skirts. Measures 24" long, 16" wide & features genuine leather skirt, factory steel baseplate. Seats with fringe do not have holes in skirt. Order hand rail separately.

VT No.	Item	Skirt
47-0521	Black Buddy	Fringe
47-0519	White Buddy	Fringe
47-0523	Black Buddy	Speedwing
31-0507	Hand Rail	Separately



47-0232

Original Buddy Seat is a replica of the 1940's reproduced by Corbin-Gentry, features stamped and formed steel replica baseplate with all brackets riveted in place. Foam is molded in a smooth contour and is covered with heavy top grade cowhide. Seams are factory style which is accomplished by riveting a leather strip to seat pan, then form fitting the leather top cover in place,



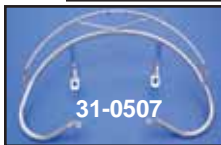
47-0538



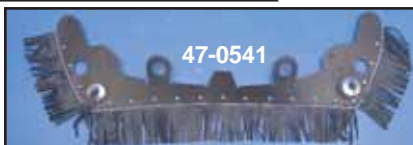
White
47-0513

finally sewing the top cover to the leather strip for the original look. Accessorized skirt with 1 hole on each side with rosettes, accepts VT No. 31-0507 chrome hand rail.

VT No.	Color	Skirt
47-0232	Black	3 piece
47-0520	White	3 piece
47-0508	Black	Without
47-0513	White	Without
47-0514	Brown	Without



31-0507



47-0541

Heritage Buddy Seat is a replica of the classic original by Corbin-Gentry replacing 52507-80. Replica formed steel baseplate is fitted with 2 1/4" foam and covered in vinyl or leather. Seat accepts our chrome hand rail and leather accessory skirt, each sold separately. Use on all models with seat post and seat "T", 1930-84 models.

VT No.	Item
47-0538	Black Naugahyde Seat
47-0540	Black Leather Seat
47-0541	Black Leather Skirt
31-0507	Chrome Handrail



Hermann Oak Leather used in seat construction.

MULTI FIT/CHOPPER