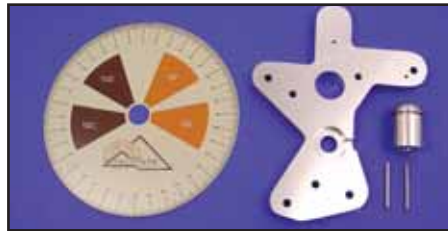




Cam Tools



Tune-A-Cam Kit includes easy to read degree wheel dial indicator, T.D.C. locator, lightweight checking springs and packed in a plastic case. Also checks cam or crank end play, shaft and gear run out.
VT No. 16-0970



Delkron Space-N-Time Tool attaches to pinion shaft of 1970-up BT, allowing you to set cam end play, check gear lash, breather timing, valve timing, and 12 other checks for blue print quality engine building. Instructions included.
VT No. 16-0714

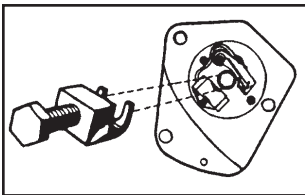


S&S Degree Wheel Kit designed to fit the sprocket shaft of any Big Twin or XL model. Each kit also comes with pointer that is held in place by center crankcase bolt.
VT No. 16-0909

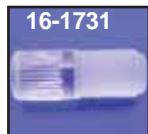


Crane Cams Installation Tool comes with easy instructions for the mechanic to install Crane's adjustable pushrods without removing the gas tank or rocker covers. In all FL-FX with adjustable pushrods, the tool makes it easy for cam changes. No removal of pushrods, pushrod covers, tappets or tappet guides. Tappets never have to fall out of the guides while doing cam changes.
VT No. 16-0030

Timing



Acu-Time Device locks advance mechanism on all 1970-78 models for accurate static timing. Includes instructions.
VT No. 16-0161



Clear Timing Plugs available long optical type or short standard version with or without the internal hex.

VT No.	Type	U/M
16-1731	Long	Each
16-0829	Hex	Each
16-0099	Standard	10 pack
16-0160	Standard	Each



Timer Device bolts inside primary cover on 1970-up Big Twin models. After installation, only inspection oval of outer primary has to be removed for accurate timing.
VT No. 16-1736



Clean Time pushes into timing hole and wipes flywheel clean for strobe timing.
VT No. 16-0715



Rite On Timing Tool provides accuracy in timing of up to 70 degrees before or after TDC for all points on electronic ignition systems used on 1970-99 Big Twins. This tool allows one person to perform all timing from the right hand side of motorcycle and is more accurate than static timing.
VT No. 16-6739



TDC Indicator is a 14mm tool that locates top dead center of piston with heads on engine, when degreasing camshaft.
VT No. 16-0047



Spark Plug Indexer fits 14mm plugs allows electrode to be placed in proper position.
VT No. 16-0623 Tool
16-0676 Index Washer 30 Assorted



Spark Plug Firing Indicator. Captive type spark plug firing indicator. No need to puncture cable. Reads flashes from neon bulb to indicate plug firing.
VT No. 16-0624



Spark Tester. Adjustable for all voltages, gauge background makes spark easy to see for accurate measure.
VT No. 16-0991



Flywheel Locking Tool screws into timing hole and allows holding of the crank for top dead center. It has a hollow center to allow view of timing mark.
VT No. 16-1851



Oversize Plugs with Tap. Kit includes a tap and a chrome dome head plug.

VT No.	Type	Includes
7502-2	Engine Drain	Plug & Tap
7503-1	Engine Drain	Oversize Plug
7500-2	Timing	Tap & Plug, Acorn
7501-1	Timing	Acorn Plug, O.S.
9407-1	Timing	Tap only