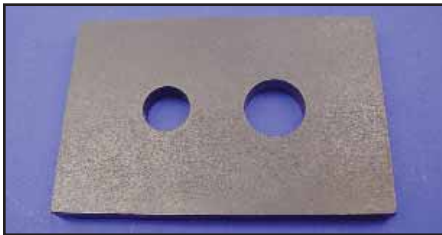




Cylinder

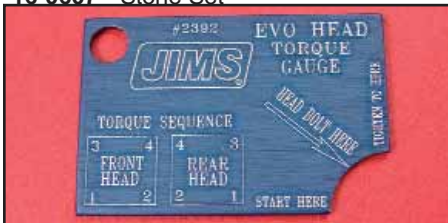


Sifton Dowel Guide Plate is precision drilled to press cylinder dowels in straight on 1984-up BT and XL models.
VT No. 16-0837



Cylinder De-Glazer feature spring action on the stones keep the stones against the cylinder wall at the correct pressure. Capacity 2" to 5 1/2".

- 16-0610** De-Glazer
- 16-1759** Set of 3 replacement stones 220 medium grit
- 16-0607** Stone Set



Head Bolt Torque Gauge for all Evos. This accurate gauge allows the measuring of 90° when tightening Evo head bolts. Torquing sequence lasered on gauge. Use on all 1984-up Evo models.
VT No. 16-0679

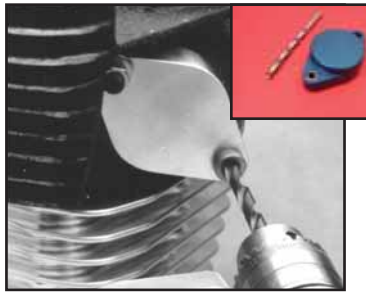


Piston Ring Installer with Safety Stop insert ring ends in jaws, then expand gently

and slip over piston into groove. A simple time saving tool. Wedge jaw handles 3/64" to 1/4". Also removes rings without damage.
VT No. 16-0628



Jims Piston Pin Support Plate provides a non-marring flat support to push the bottom of the piston against as rings and cylinder are installed over piston. Use on all 1936-up Twins.
VT No. 16-1164



Exhaust Stud Drill Fixture fits 1984-up Ex BT & XL ports to align for drilling of broken exhaust stud.
VT No. 16-0698



SPI Hole Micrometers are used to determine cylinder bore size (2.80-3.20)
VT No. 16-7433



Crankshaft Stabilizer Bracket acts as third hand. Sliding over crank splines, and bolting to a primary mount hole prevents crank from turning while installing pistons, cylinders or rings.
VT No 16-5051

Piston



Piston Ring Grinder accurately sizes end gap on any piston ring by rotary filing.
VT No. 16-0976 Grinder
16-0722 Replacement Cutter File



Ring-O-Matic Ring Compressor has pliers which incorporate precision locking action for exact holding and quick release. Includes pliers and 6 bands, size range from 2 7/8" thru 4 3/8". Complete kit.
VT No. 16-0622



Evo Cylinder Tools allow installation of stud to correct height or removal by locking to stud.

- | VT No. | Item |
|----------------|-----------------|
| 16-1845 | Assembly Tool |
| 16-1846 | Extracting Tool |



Cylinder Jig Assembly use to repair stripped damaged cylinder base threads up to a 4" bore, in engine case. This will hold centerline and squareness to where the factory intended them to be. All this with the engine still in the frame using an angle head drill (drill not included). Use on all 1984-99 Big Twin Evo and 1986-up XL.
VT No. 16-0891



Multi-Blade Groove Cleaner offers a 1-piece blade arrangement for 1/16", 5/64", 3/32", 1/8" & 3/16" groove widths. Available for pistons 2 to 5 inches in diameter. **VT No. 16-0619**



Jims TC-88 Piston Pin Alignment Tool use on all TC-88 A or B motors with .927" diameter wrist pins.
VT No. 16-1148