



Wrenches



Evo Rocker Box Cover Wrench is designed to reach 3/16" allens on Evo Big Twins and Sportster models. Features a 3/8" drive for use with torque wrench and a vinyl covered handle. **VT No. 16-0220**



FLT Rear Axle Nut Ratchet Wrench for 36mm axle nut. Low profile design allows access to rear axle nut without removal of exhaust system. **VT No. 16-9636**



16-6530



16-6529

Evolution Ratcheting Intake Manifold Wrench features ball end allen bit end for flexibility in tight areas. **VT No. 16-5530**

Evolution Rocker Box Cover Ratcheting Wrench features low profile to allow clearance between frame & engine, long handle for increases reach and replaceable bit.

VT No. Item
16-6529 Wrench
16-6530 Replacement Bits



Intake Manifold Allen Wrench cuts work in half, no need to remove gas tanks, on all Evo BT & Sportsters. **VT No. 16-1806**



16-6531



16-6532

Lower Rocker Box Wrench for Evo & Twin Cam Models is used to install and remove lower rocker 7/16" mounting bolts.

VT No. Fits
16-6531 Evo
16-6532 TC-88



Exhaust Bracket Wrench used to remove and install front exhaust bracket bolts on all 1999-up TC-88 Dyna models. **VT No. 16-6538**



Speedometer Sending Unit Wrench features a shortened 3/16" ball end hex bit for removal or installation of hex screw used on all Big Twin models. Equipped with electronic sending units. **VT No. 16-6738**

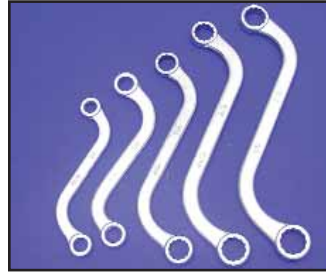


Oil Pressure Gauge and Indicator Lamp Sending Unit Wrenches. These reversible ratcheting wrenches are used to install and remove oil pressure indicator lamp or gauge sending unit on all FL Touring models 1999-up.

VT No. Item
16-9723 Indicator Lamp
16-9724 Sending Unit



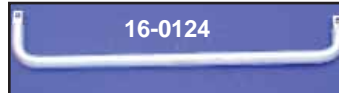
Left Rear Motor Mount Bolt Wrench allows removal and installation of left rear motor mount bolt on Big Twins without removing the inner primary cover. **VT No. 16-0518**



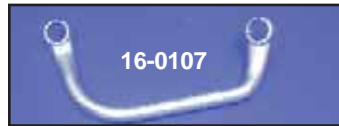
5 Piece "S" Box Wrench Set includes 3/8 x 13/32, 7/16 x 1/2, 9/16 x 19/32, 5/8 x 11/16, 11/16 x 3/4. **VT No. 16-0013**



16-0108



16-0124



16-0107



16-0103

Shop Wrenches.

VT No.	OEM	Use
16-0141	94555-55A	BT Pinion Nut, 1954-up
16-0106	94644-65	BT Primary Shoe, fits through cover access hole
16-0124	94590-73	3/8" Drive for Head Bolts
16-0107	94585-30	Cylinder Base, 5/8"
16-0875		Tappet Oil Screen, Plug
16-0108	94589-29A	Cyl. Base, Head Bolt fit 9/16" Nuts
16-0804	11929-29	Spark Plug & Tappet
16-0103	94501-56	Circuit Breaker BT 17/18" Hex
16-0067	12047-30	UL Head Bolt
16-0068	12047-36	OHV Head Bolt



Manifold-Side Car Wrenches large type, heavy duty for shop use.
VT No. OEM Size Use
16-0111 94536-18 1 3/4" Side Car
16-0110 94537-26 1 7/8" 45 Manifold
16-0112 94538-30 2" SV Manifold
16-0109 94538-48 2 1/8" BT Manifold