

Lower Neck Bearing Puller Set includes cross arm puller, rods and lower puller claw. Simply remove roller from old bearing, install claw and turn puller.

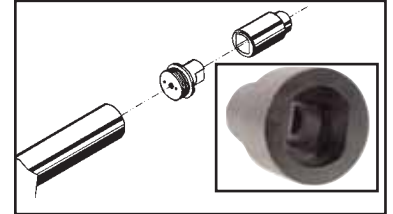
VT No. 16-0073



FXSTS Fork Stem Bearing End Play Setup Wrench. Offset Handle allows for proper clearance of fuel tank and other accessories.

VT No. 16-0444

Fork



Fork Tube Plug Tool has a special socket which fits 1948-up Glide Fork Plug, 1/2" drive.

VT No.	Brand
16-0630	VT
16-1008	Jims



Fork Bearing Installer Tool fits over 1" stem allowing bearing to be "driven" on.

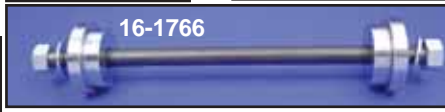
VT No. 16-0724



16-1768



16-0895



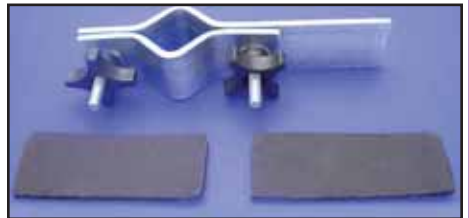
16-1766



16-0065

Steering Head Bearing Tools fit 1988-up FXST, 1982-up XL, 1992-up FXDB-FLT to remove or install races.

VT No.	#	Item
16-1768	A	Remover
16-1766	B	Installer
16-0065	C	Driver Handle for A
16-0895	D	Driver Handle Adapter, 1992-up FLT-FXD



Fork Leg Holding Tool holds for prevent fork tube from turning when removing top nuts.

VT No. 16-0898



Hex Top Fork Nut Socket has 3/8" drive, rubber protector on inside for Glide Forks, 35mm. By Jims.

VT No. 16-0670



Socket Wrench is designed for easy removal and installation of stock 1 3/8 hex flat top fork tube plugs. Installed O-Ring eliminates damage to top of plug. Black oxide.

VT No. 2317-1

Socket Wrench is designed for easy removal and installation of 1 3/8 Hex Colony custom dome style fork tube plugs. Will also fit stock and Colony Knucklehead rocker arm shaft nuts (7110-8). Installed O-Ring eliminates damage to top of plug. Black oxide.

VT No. 2319-1



Fork Tube Spring Retainers and Pin Wrench Kit includes 2 retainers for 1952-72 XL and pin wrench for installation removal of retainers.

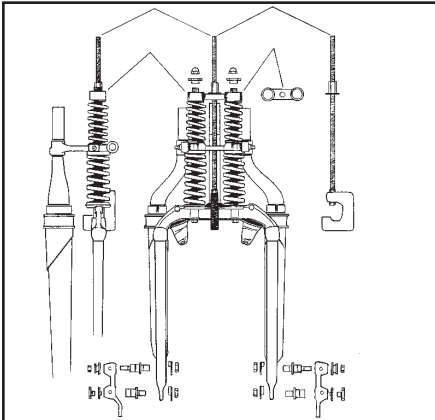
VT No.	Item
7700-3	Kit
7701-2	Retainers only, pair



Spring Fork Rocker Bushing Remover-Installer

Tool will replace stock steel bushings on 1930-57 Spring Forks.

VT No. 7611-2



VT No. 16-1003 Shown

Spring Fork Assembly Clamp facilitates building of stock type forks by compressing upper & lower spring.

VT No.	Years
16-1003	1936-57
16-0739	1988-up



Fork Pre-Load Assembly Tool allows pre-load to be set on 41mm forks during assembly.

VT No. 16-0745



16-0573



16-1009

Fork Spring Compressor Tool puts pressure on top fork plug to compress spring to ease in assembly.

VT No.	Type
16-0573	Trock
16-1009	Jims



1936-48 Big Twin Cone Nut Wrench features pins to turn cog style cone nut 3/8" drive.

VT No. 16-0178