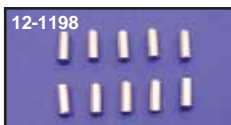




Pin



Dowel Pins-Roll Pins. Special pins in 25 packs. Check factory parts book for more applications.

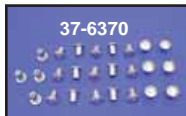
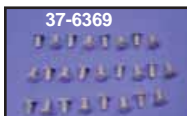
VT No.	OEM	Fits	Use
12-1169	216	1971-73 FX	Transmission
12-1198	221	1990-up	Primary
12-1176	255	1971-76	Solenoid
12-1182	256	1977-up BT	Solenoid
12-1175	271	1941-up 74, 1954-up XL 1931-up 45"	Cam
12-1184	275	1941-up BT	Cam Case
12-1185	327	1941-up BT	Gear Case
12-1215	328	1980-up	Trans
12-1216	329	1980-up	Starter
12-1217	332	1980-up	Starter
12-1173	333	1937 UL & 45 1957-81 XL	Oil Strainer, 10 pk
12-1174	334A	1965-up FL-FXE	Starter
12-1219	336	1979-up	Trans
12-1167	341	1941-up FL-FX	Oil Pump
12-1153	358	1970-83	Cam Cover
12-1172	375	1941-up BT	Transmission
12-1166	377	1930-up BT	Cam Cover
12-1177	600	1979-up	Solenoid
12-1178	601	Shifter Cam	Solenoid
12-1160	603	1976-84 BT	Rotor
12-1183	606	1952-70 XL	Clutch Hub
12-1218	609	FXR-FLT	Dowel
12-1181	614, 640	1971-E75 BT	Solenoid
12-1163	615	1970-78 All	Points
12-1164	620	1970-78 All	Points
12-1162	623	1970-78 All	Points
12-1170	625	1975-79 FX	Transmission
12-1171	9106A	1971-79	Transmission

Cotter Pins are zinc plated, sold in 100 pack.

VT No.	OEM	Size
37-8660	510	1/16" x 1/2"
37-8795	511	3/32" x 1/4"
37-8659	512	1/16" x 5/8"
37-9042	515	1/16" x 3/4"
37-8786	528	3/32" x 5/8"
37-8787	531	3/32" x 7/8"
37-8661	534	3/32" x 1"
37-8788	513	3/32" x 1 1/16"
37-8789	550	1/8" x 5/8"
37-8790	559, 520W	1/8" x 1 1/4"
37-8663	566	3/16" x 1"



Rivet



Replacement Fender Rivets fit all FL front and rear fenders and FX front fenders, 25 pack.

VT No.	Fits
37-6368	Big Twin Fender Brace
37-6369	Big Twin Fender Top
37-6370	FX Front, 1973-up Stainless



Clutch & Brake Brass Rivets.

VT No.	OEM	Type	Use	U/M
37-8805	—	Short 4-4 1/2	Brake	
37-8806	41871-31	Long 4-5	Brake	100
37-8807*	8226	Short 7-4	Clutch	100
37-8808	8232	Long 7-5	Clutch	100
23-0522	8475	1974-76F Br	ake	10

*Note: For clutch hub friction disc.



Fiberglass Saddlebag Rivets, pack of 50.

VT No.	OEM	Length
37-0566	90965-63	5/16"
37-0567	90966-67	1/4"
37-0568	90967-64	3/8"

Seal



BT Left Side Engine Case Seals

VT No.	#	OEM	Year	Model
7411-2	A	24776-40	1936-54	61-74-80
14-0965		24031-55	1955-68	OE type
7410-55	C	24031-55	1955-68	VT
7410-1	C	24031-55	1955-68	Colony
7410-1-OS		Oversize	1955-68	Colony (+.002)
7410-1-US		Undersize	1955-68	Colony (-.002)
14-0177		Seal only	For above	
14-0185	B	24031-69	1969 only	BT
14-0108	B	12026B	1970-99	BT, 5 pk
14-0580	B	12026-B	1970-99	BT, 5 pk
14-0810	B	12068	2000-up	TC-88
14-0980		12068	2000-up	TC-88

Note: 7410-1, 7410-55 area screw-in insert with integral seal. 14-0965 is stock type screw-in without seal. 7411-2, 8211-2 both include seal, spacer & snap ring.