



Spacer



Zinc Spacers

VT No.	ID x OD x L	
37-0469	1/4 x 15/32 x 5/32	
37-0404	1/4 x 9/16 x 3/4	
37-0405	1/4 x 9/16 x 3/4	Black
37-0473	5/16 x 1/2 x 1/2	
37-0406	5/16 x 5/8 x 1/4	
37-0407	5/16 x 7/8 x 3/8	Black
37-0428	5/16 x 3/4 x 1/4	
37-0408	5/16 x 3/4 x 1/4	
37-0409	5/16 x 3/4 x 1/2	
37-0410	5/16 x 5/8 x 3/8	
37-0411	5/16 x 7/8 x 3/8	
37-0412	5/16 x 5/8 x 3/4	
37-0413	5/16 x 5/8 x 1 1/8	
37-0454	5/16 x 1/2 x 5/8	
37-0455	5/16 x 1/2 x 1/2	
37-1019	5/16 x 1/2 x 1 5/16	
37-0984	5/16 x 1/2 x 2 1/4	Black
37-0458	3/8 x 3/4 x 5/8	
37-0414	3/8 x 1 x 1	
37-0430	3/8 x 1 x 1 1/4	
37-0415	3/8 x 5/8 x 1 1/8	Cadmium
37-0416	3/8 x 1 x 1 1/2	
37-1018	3/8 x 1 x 1 5/16	
37-0417	25/64 x 1 x 1/2	
37-0954	.40 x .6 x .5	
37-1210	7/16 x 1 1/8 x 1	
37-0431	1/2 x 5/8 x 1 1/4	Black
37-0418	1/2 x 1 x 1/2	
37-0439	1/2 x 3/4 x 1	
37-0420	1/2 x 3/4 x 2 1/4	
37-0421	5/8 x 1 x 1/4	
37-0432	25/64 x 3/4 x 1 1/2	Zinc Spacer

Chrome Steel Spacers.

Pack of 5.		
VT No.	ID x L	OD
37-0459	1/4 x 1/8	5/8
37-0460	1/4 x 1	5/8
37-0461	5/16 x 1/8	5/8
37-0462	5/16 x 1/4	5/8
37-0463	5/16 x 3/8	5/8
37-0464	5/16 x 1/2	5/8
37-0465	5/16 x 3/4	5/8
37-0466	3/8 x 3/8	3/4
37-0467	3/8 x 3/4	3/4
37-0445	3/8 x 1	5/8
37-0468	3/8 x 1	3/4

Aluminum

ID x OD x L
37-0422 1/4 x 5/8 x 5/8
37-0423 5/16 x 1 1/16 x 7/16
37-0424 3/8 x 1 x 7/8
37-0425 3/8 x 5/8 x 1 1/8

Chrome Steel Spacer 10 pack.

VT No.	ID x OD x L	VT No.	ID x OD x L
37-0457	1/4 x 15/32 x 1/4	37-0400	5/16 x 3/4 x 1
37-8628	1/4 x 7/16 x 3/16	37-0401	5/16 x 5/8 x 1 1/8
37-8629	1/4 x 7/16 x 1/4	37-8636	3/8 x 9/16 x 1/8
37-8630	1/4 x 7/16 x 3/8	37-8637	3/8 x 13/16 x 1/2
37-0470	1/4 x 1/2 x 3/32	37-0402	3/8 x 3/4 x 1/2
37-0435	1/4 x 3/4 x 1/2	37-0403	3/8 x 5/8 x 7/8
37-8631	1/4 x 7/16 x 5/8	23-0600	3/8 x 9/16 x 1/4 (a)
37-8632	1/4 x 7/16 x 3/4	23-1742	3/8 x 3/4 x 3/16 (b)
37-8633	1/4 x 7/16 x 7/8	37-8638	7/16 x 1 1/16 x 5/16
37-8634	1/4 x 7/16 x 1 1/16		
37-8635	5/16 x 1/2 x 17/32		

(a): Replaces 44132-72 Disc Brake Caliper Washer
 (b): Replaces 50668-35 1958-78 Master Cylinder Spacer

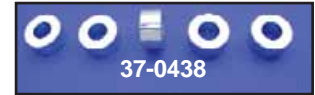
Chrome Countersunk Washer Sets are the 82° type to accept flat head socket screws.

VT No.	Size	Quantity
9843-8	#10	8
9834-8	1/4"	8
9835-8	5/16"	8
9836-5	3/8"	5
9844-5	7/16"	5



Chrome Top Motor Mount Spacer Set for spacing out top mount or wide tire conversions. Spacers have 7/16" ID with 1 1/8" OD.

VT No.	Thickness
37-0438	5/8"
37-0419	3/4"
37-0437	1/2"



Washer



Lockwasher Biter Assortment includes 50 piece of each size.
 VT No. 37-0535

Lock Washers

Zinc	Chrome	OEM	I.D.	Qty.
37-0689	37-9053	—	#8	100
37-0852	—	—	#10	25
37-0690	37-9054	6998	1/4"	100
—	9516-12	6998	1/4"	12
37-0691	37-9055	7041	5/16"	100
—	9517-12	7041	5/16"	12
37-0692	37-9056	7038	3/8"	100
—	9518-6	7038	3/8"	6
37-0693	37-9057	7039	7/16"	100
—	9519-6	7039	7/16"	6
37-0694	37-9058	7068	1/2"	100
37-0798	—	7238	1/2"	25
—	9971-5	—	1/2"	5
37-0695	37-9059	7022	5/8"	50

Flat Washers

Zinc	Chrome	I.D.	Type	Qty.
37-0681	37-8557	#8	Standard	100
37-0682	37-8558	#10	Standard	100
—	8166-12	1/4"	Standard	12
37-0683	37-8559	1/4"	Standard	100
—	8167-12	5/16"	Standard	12
37-0684	37-8560	5/16"	Standard	100
—	8168-6	3/8"	Standard	6
37-0685	37-8561	3/8"	Standard	100
—	8169-6	7/16"	Standard	6
37-0686	37-8562	7/16"	Standard	100
37-0687	37-8563	1/2"	Standard	100
—	9972-5	1/2"	Standard	5
37-0688	37-8564	5/8"	Standard	50
37-9273**	37-8565	5/16"	5/8" OD OE	100
37-9272	—	1/4"	OE 25	—
—	9633-50	1/4"	OE	50
—	37-8567*	1/4"	Special	50
—	2115-12*	1/4"	Special	12
—	37-8568*	5/16"	Special	50
—	2110-12*	5/16"	Special	12
—	37-8569*	3/8"	Special 50	—
—	2114-6*	3/8"	Special	6
—	37-8570*	7/16"	Special	50
—	2112-6*	7/16"	Special	6
—	37-8571*	1/2"	Special 25	—
—	37-8572*	5/8"	Special	25



*Note: Extra thick with tighter fitting I.D. than standard SAE washers.

**Note: 25 pieces per pack