



Rear Frame Chrome Section. Order pivot kit separately.

For 2000-05 FXST and 2000-up FLST

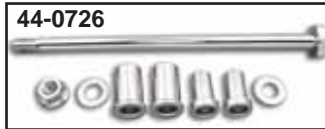
VT No.	OEM	Finish	Brand
51-0978	48442-00	Chrome	VT
51-0974	48442-00	Chrome OE	

For 2006-07 FXST

51-0979	48607-06	Chrome	VT
44-0588	Pivot Kit	Chrome	VT

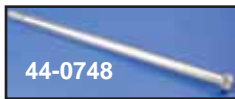
For 2008-up FLSTF

51-0848	47573-08	Black	OE
---------	----------	-------	----



Chrome ST Pivot Assembly includes shaft, nut and spacers.

VT No.	Item	Year
44-0739	Flush Mount Shaft	2000-06
44-0588	Complete Kit	2000-06
44-0726	Shaft Kit	2000-07
44-0748	Shaft Kit	2008-up



Rear Fender Strut Mounting Kit is chrome plated unique low profile allen hardware kits to mount struts to fender. Fits FX & FL Softail 2000-up except FX Deuce.

VT No. 2043-26

2000-up ST Rear Swing Arm



2000-up Swing Arm Hardware.

VT No.	OEM	Item
44-0608	47610-00	Chrome Pivot Shaft
44-0623	45048-00	Bushing, pair
44-0624	48049-00	Spacer, pair, 2000-06
44-0625	9270	Bearing Only, 2000-up
44-0588	—	Rear Pivot Kit
44-0663	47119-02	Pivot Kit
44-0626	11282	Retaining Ring
44-0627	6535	Left Side Pivot Washer
44-0629	6534	Right Side Pivot Washer
42-0686	43462-00	Dome Cover Set
37-0960	7479	Nut Only

ST Rubber Bumper for 2000-up replaces 11514.
VT No. 28-0587



Pivot Spacer Sets fit ST models (4 piece).
VT No. Year Finish
44-0710 2000-06 Zinc
44-0712 2007 Zinc
44-0711 2008-up Zinc



FXST-FLST Rear Fender Extension to replace stock plastic extension. Flat panel design for 2000-up.

VT No.	Finish	Year
50-0517	Stainless	2000-07
50-0518	Chrome	2000-07
50-0522	Stainless	2008-up



2001-07 Upper Swing Arm Covers fit Softail models. Bolt on to cover welded area.
VT No. 42-0378



Chrome Rear Swing Arm & Shock Assy

Chrome Rear Swing Arm and Shock Assembly fits ST models includes chrome tail section, adjustable shocks with 1" lowering capability, chrome axis tube with tapered allen screws and chrome shock mount bolts.

VT No.	Year
51-0651	1986-99
51-0652	2000-05
51-0663	2006-07