



Ignition Advance Unit



Blue Streak Sifton "Tuneable" Ignition Advance Assembly includes stainless advance base, points plate with "Blue Streak" points and condenser with hardware and 3 pairs of color coated springs which allow full advance at 1400, 2000 and 2600 RPM depending on which spring is selected.

VT No. 32-0713



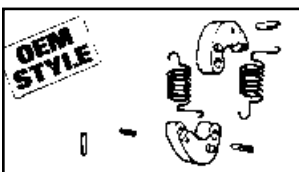
Competition Advance Unit by Rivera Competition features machined stainless steel shaft and plate, metallic coated weights and special wound springs for exact advance. Replaces 32505-78A for 1970-up, mechanical advance applications. Center screw included.

VT No.	Item
32-9037	Competition Unit
32-9223	Rebuild



Tuneable Advance Unit features stainless base, heat treated weights cam bolt and 3 different color coded spring sets which allows full advance at 1400, 2000, and 2600 RPM depending on which springs are selected. Can be used with all ignitions, points, single or dual fire types which utilize an advance unit. Springs also available separately.

VT No.	Type
32-9220	Stock
32-9261	Needle Bearing
13-0121	Stock Springs, Black
13-9246	Heavy
13-9247	Severe



Automatic Advance Rebuild Kit includes 2 of the following: springs, weights, and 4 roll pins. For all 1970-78 Twins.

VT No. 32-0140

Warranty

All Electrical Components sold as individual pieces or in kits are covered under our warranty "Replacement Only" Provision. All electrical related item part numbers begin with a 32 prefix. No credit will be issued for these items as they are exchange only.



32-7773



32-0136



32-0150

Points Conversion Kit. Both brands include everything necessary for direct replacement on 1970-78 BT, 1971-78 Sportsters or for converting late

model electronic-type back to points. Accel type available with microchip points, which will require a domed shaped points cover such as VT No. 42-0299 to accommodate taller points. The V-Twin unit includes stock style points and condenser. 32-0150 available with stock needle bearing weights.

VT No.	Item	Type
32-7773	Accel with Microchip	Stock
32-0136	V-Twin with Points	Stock
32-0150	V-Twin/Points	Needle



Points Plate Screws replace 32606-82.

VT No.	Type
32-0760	Stainless
32-0049	Zinc

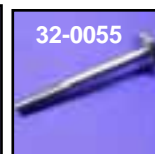


Stainless Advance Unit features stainless base, heat treated weights and cam center screw for 1970-up mechanical advance ignition.

VT No.	Item	Brand
32-0178	W/Bolt	Sifton
32-0168	W/O Bolt	V-Twin



32-7510



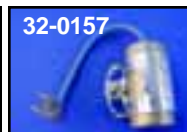
32-0055

Advance Units feature heat treated weights and steelbase. Order center bolt separately.

VT No.	Type
32-7510	Advance
32-0055	Center bolt



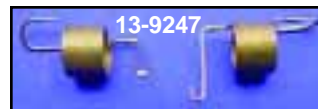
32-0156



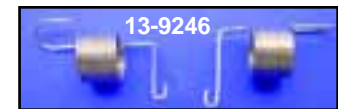
32-0157

Blue Streak Premium Parts for 1970-78 Twins.

VT No.	Item
32-0156	Points
32-0157	Condenser



13-9247



13-9246

1970-up Advance Weight Springs.

VT No.	Fits
13-9247	Severe Duty Advance Weight Springs for all Hi-compression and heavily modified engines. Also useful for applications experiencing detonation (pinging) or very erratic idle, pair
13-9246	Heavy Advance Weight Springs for slightly modified stock, low compression or mild stroker application, helps cure minor idle problems, pr
13-0121	Original type replacement. Uses premium grade spring steel, 10 pk