

# OHV Pinion Shaft



**Nut Pinion Shaft Gear End, each.**  
**Eastern Jims OEM Fits**  
**12-0507 12-0613 24023-54 1954-89 Big Twin**  
**Colony**  
**2287-1**



**Pinion Shaft Screws, left-hand, 1951-53**  
 BT. Replaces 24020-51, 5 pack.  
**VT No. 10-0518**



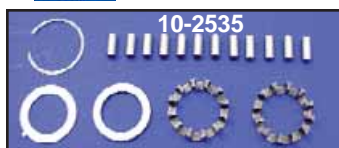
**Lock Plate, Pinion Shaft Nut, 10 pack.**  
**VT No. OEM Fits**  
**17-0913 24015-36 1936-80 BT**  
**17-0929 24016-29 1929-73 45"**  
**12-0209 11218 Taper 1981-92**



**Pinion Keys available in ten packs.**



VT No.	OEM	Type	Fits
12-0202	23985-54	Gear	1954-75
12-0205	26348-15	Gear	1975-86
12-0200	23985-12	Taper	1941-81
12-0209	11218	Taper	1981-92



**Pinion Bearing Sets** for right side includes rollers and cages for BT 61 & 74 & 80. OHV & SV. Washers and snap rings included when required except where \*noted.

VT No.	Year
10-2535	1936-54
10-2551	1955-57
10-2533	1958-86

## CASE ROLLERS

**1940-E54 OHO Big Twin, Big Twin Right Side** replaces 9261, 12 per set.

Size	12-Piece	100 Pack	OEM
STD	10-0307	12-4523	9261
.0002	10-0308	12-4524	9262
.0004	10-0309	12-4525	9263
.0006	10-0310	12-4526	9264
.0008	10-0311	12-4527	9265
.001	10-0312	12-4528	9266



**1955-57 Big Twin Right Side Case Roller Sets, 13 per set.**

Size	13-Piece	100 Pack	OEM
STD	10-0326	12-4517	9421
.0002	10-0327	12-4518	9422
.0004	10-0328	12-4519	9423
.0006	10-0329	12-4520	9424
.0008	10-0330	12-4521	9425
.001	10-0331	12-4522	9426

**All Rollers by TORRINGTON®**



**1958-86 Big Twin Right Side Case Rollers, 28 piece.**

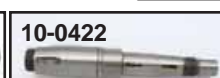
Size	28-Piece	100 Pack	OEM
STD	10-0319	12-4510	9220
.0002	10-0320	12-4511	9221
.0004	10-0321	12-4512	9222
.0006	10-0322	12-4513	9223
.0008	10-0323	12-4514	9224
.001	10-0324	12-4515	9225
.002	10-0325	12-4516	

**L1954 BT Right Crankcase Rollers, 12 piece.**

Size	12-Piece	100 Pack	OEM
STD	12-4573	12-4593	9241
.0002	12-4602	12-4603	9242
.0004	12-4575	12-4595	9243
.0006	12-4574	12-4594	9244
.001	12-4604	12-4605	9246

**1940-54 Big Twin Left Side Case Rollers, 24 per set.**

Size	24-Piece	100 Pack	OEM
STD	10-0300	12-4510	9220
.0002	10-0301	12-4511	9221
.0004	10-0302	12-4512	9222
.0006	10-0303	12-4513	9223
.0008	10-0304	12-4514	9224
.001	10-0305	12-4515	9225
.002	10-0306	12-4516	



## Big Twin Pinion Shafts.

Model	Year	OEM	Jims	Eastern	Replica
61 & 74	1939-53	24006-39	10-8323	10-0400	10-0441
61 & 74	1954-57	24006-54A	10-8324	10-0401	10-0422
74	1958-72	24006-58	10-8325	10-0402	10-0423
74 & 80	1973-80	24006-73	10-8326	10-0403	10-0875
Delkron Type	1981-86 Special		10-8367	—	—
80	1981-82	24006-80	10-8328 <sup>1</sup>	10-0408	—
80	1983-86	24006-83	10-8328	10-0409	10-0439

<sup>1</sup> Requires use of late 3/4 x 20 nut 24016-80



**Pinion Shaft Nut, Taper End.**  
**Eastern Jims Colony OEM Fits**  
**5pk Each Each**  
**12-0532 12-0612 2286-1 24023-36 1936-E81 BT**  
**12-0517 12-0609 24016-80 L1981-83 BT**



**Case Race** machined and ground to factory specifications.

**Replica brand** is manufactured by Sifton.

## Sprocket Left Side Case Race for OHV.

Jims	Eastern	OEM	Size	Year/Model
10-0235	10-0208	24621-40	STD	1940-54 BT
—	10-0279	Replica	STD	1940-54 BT
10-0236	10-0209	—	.005	1940-54 BT
—	10-0210	—	.010	1940-54 BT
—	10-0211	—	.015	1940-54 BT

## Pinion Right Side Case Race

10-0240	10-0204	24599-40	STD	1940-54 BT
—	10-0293	Replica	STD	1940-54 BT
10-0241	10-0205	—	.005	1940-54 BT
—	10-0206	—	.010	1940-54 BT
—	10-0207	—	.015	1940-54 BT
10-0243	10-0212	24599-55	STD	1955-57 BT
—	10-2485	—	.002	1955-57 BT
10-0244	10-0213	—	.005	1955-57 BT
—	10-0278	Replica	STD	1958-92 BT
10-0245	10-0214	24599-58A	STD	1958-92 BT
10-0246	10-0215	—	.002	1958-92 BT
—	10-0216	—	.005	1958-92 BT
10-0248	10-0217	—	.010	1958-92 BT
—	10-0230	—	.015	1958-92 BT

**1936 OHV Case Races.** Note: VT No. 10-2498

—	10-0226*	413-36	1936-39	Right	Std.
—	10-0227*	—	1936-39	Right	.005
—	10-0228*	416-36	1936-39	Left	Std
—	10-2521*	—	1936-39	Left	.002
—	10-0229*	—	1936-39	Left	.005

**\*Note:** Fits 1937-39 Big Twins, 1936 OHV, requires use of 12-0625 washer and gasket set.