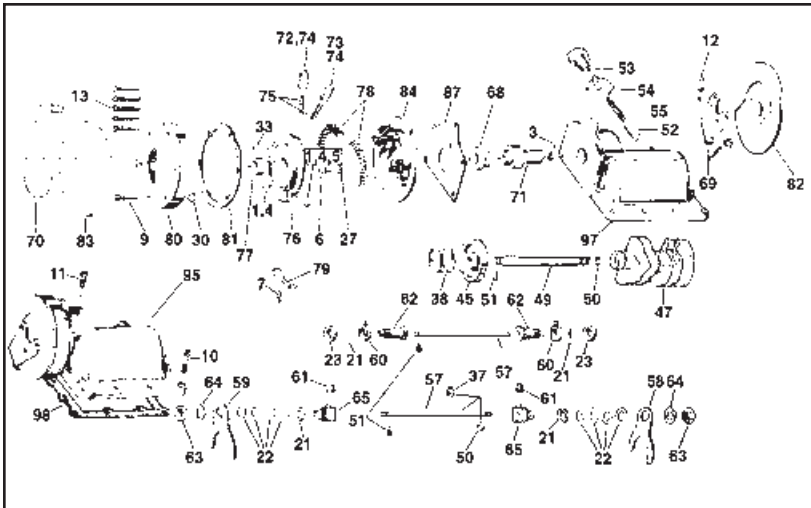
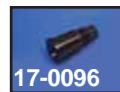


1952-79 BT Ratchet Top



1952-79 Big Twin Ratchet Top Parts.

VT No.	#	OEM	Item
12-1162	4	623	Roll Pin
17-0079	6	1369	Phil. Screw, 10 pk
17-0078	7	1608	Screw, 10 pk
17-0077	9	1764	Screw, 6 pk
8148-13	10	1765W	Cadmium Screw
	11	1766W	Set
21-1987	12	1767W	Chrome Lever Screw, 12 pk
17-0074	13	1772W	Screw, 5 pack
12-1171	33	9106A	Pawl Carrier Pin
12-0702	21	6750	Shim .005"
12-0703	22	6752	Shim .015"
17-9751	23	6754	Shim 3/32"
10-1257	22		Shim .007
13-0126	38	33390-26	Gear Spring, 10 pk
17-9765	45	33960-36A	Gear
17-9766	47	34019-73	Shift Cam, FL only
17-0208	47	44006-76	Shift Cam, FX
17-0133	49	34030-36	Cam Shaft Hand Shifter
17-0134	49	34031-41	Cam Shaft Foot Shifter
14-0117	50	34036-36	Oil Seal
17-0132	51	34050-36	Lock Screw, each
17-0076	52	34062-52	Cam Follower
17-0075	53	34064-52	Cam Bolt
17-0916	54	34066-52	Lock Tab, 10 pk
13-0130	55	34068-52A	Spring
17-0135	57	34140-36	Fork Shaft 1936-76
17-0136	57	34145-76	Fork Shaft 1977-84
17-0115	58	34158-36	Main Shift Fork
17-0116	59	34159-36	Counter Shift Fork
17-0097	60	34165-36	Shifter Finger
17-0117	61	34168-39	Finger Roller Pair
17-0096	62	34175-36	Bushing Fork
12-0526	63	34179-33	Nut, Bushing, 5 pk
17-0906	64	34180-33	Lock Tab, 10 pk
17-0069	65	34182-76	Shift Finger, Late 76-79
10-0725	68	34435-52	Shaft Bushing Footshift Models
10-0732	68	34430-36	Shaft Bushing Handshift Models Only
21-0202	69	34447-52	Chrome Lever
21-0195	70	34447-74	FX Lever, Chrome
17-9767	71	34453-52	Shifter Shaft
17-0073	72	34477-53	Shifter Pawl, Left
Pair	73	34478-53	Shifter Pawl, Right
17-0068	74	34478-75	Shifter Pawl, Late
13-0133	75	34482-53	Pawl Spring, 10 pk
17-0071	76	34488-52B	Pawl Carrier
10-0726	77	34498-52	Pawl Bushing
13-0134	78	34500-52A	Carrier Spring, 10 pk
17-0070	79	34525-54	Pawl Retainer
17-0103	80	34551-52	Shift Cover, Aluminum
17-0102	80	34551-52	Shift Cover, Chrome
15-0159	81	34552-52	Cover Gasket
21-0200	82	34555-52	Chrome Cover
21-0201	83	34555-74	FX Chrome Cover
17-9895	84	34560-52	Adapter Plate
15-0160	87	34565-52	Plate Gasket
17-0050	95	34799-65	Shift Top, Complete
17-0105	97	34803-59	Shift Top, Bare
15-0161	98	34824-36	Top Gasket



Ratchet Top Assembly. Complete assembled unit replaces 34799-65 features cast shifter drum, chrome arm & cover, and natural finish or chrome top casting. FLH type is 1 down, 3 up shift pattern, FX is 1 up and 3 down pattern

VT No.	Type	Item	Brand	Type
17-0050	Plain	Complete	VT	FL
17-0045	Chrome	Complete	VT	FL
17-0852	Plain	Complete	VT FX	
17-0875	Chrome	Complete	VT	FX
17-0105	Plain	Top Casting Only	STD	—
17-0106	Plain	Top Casting Only	VT	—
17-0232	Chrome	Top Casting Only	VT	—



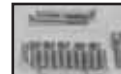
1952-78 Big Twin Ratchet Top Shift Cam Follower Kit includes bolt, follower, spring and lock tab.

VT No. 17-0750



Gear Box Vent Screw replaces 34720-56 in 1936-84 4-sp speed transmissions, chrome finish, sold each.

VT No. 37-8890



Transmission Top Cover Screw Kit. Stock fasteners & special vent screw fits Big Twin 4-Speed models.

Chrome	Cadmium	Parkerized	Year	Type
8147-13	8148-13	—	1936-78	Stock Slot
8750-14		—	1936-64	Allen
9612-13	9613-13	9620-13	1936-55	Stock Oval
2103-13	2104-13	—	1950-53	Phillips Oval
8748-12	8749-12	—	1965-79	Allen



Chrome Dust Shield and Shifter Lever Set complete with mounting hardware.

VT No.	Fits	Type
21-0210	1952-E78 FL, Covers Ratchet Drum	Full
21-0208	1952-E79 FL	Stock
21-0214	1974-E79 FX	Stock
21-0209	1974-E79 FX, Covers Ratchet Drum	Stock