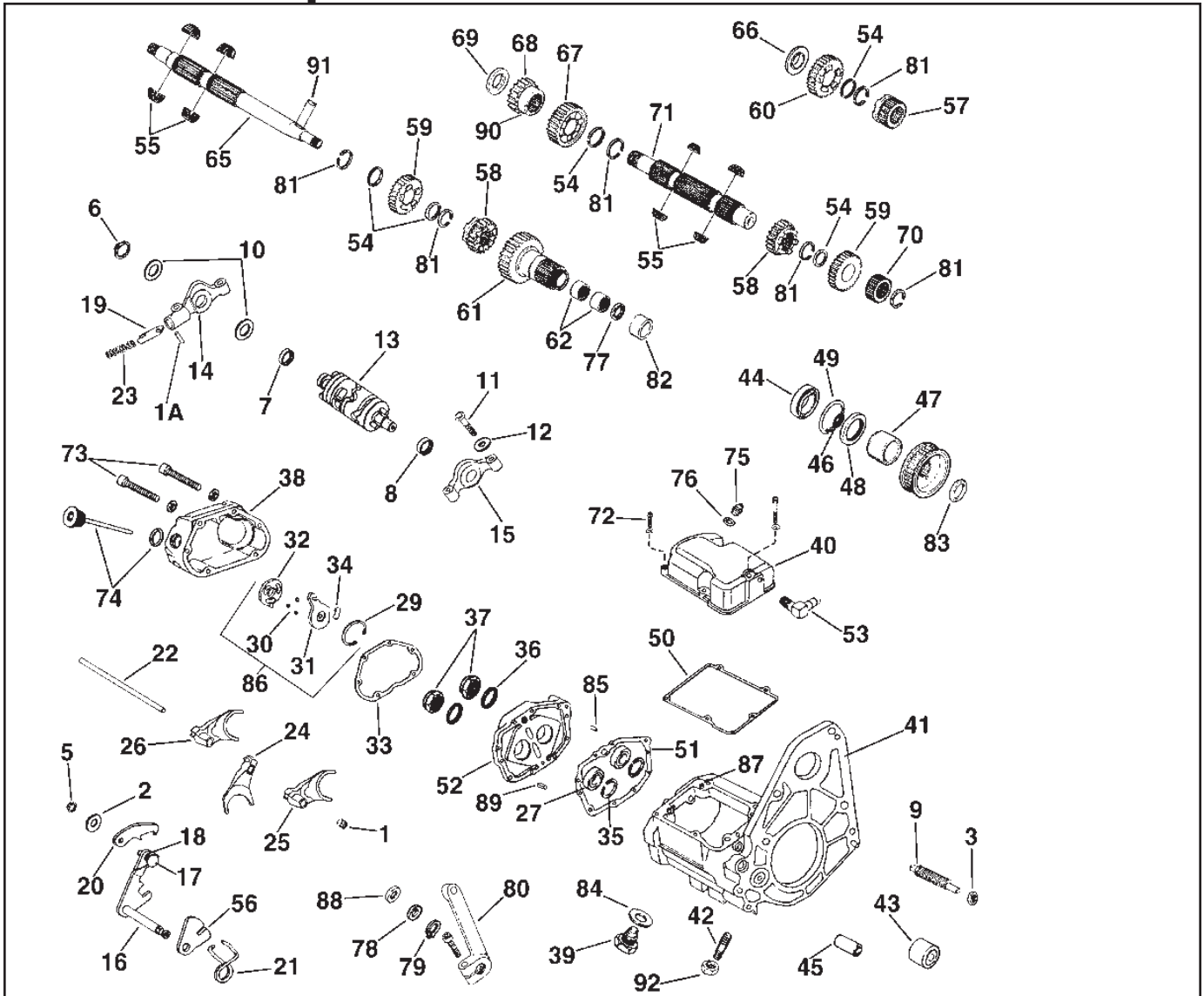




5-Speed Transmission Parts

BIG TWIN



Shifter Parts



Chrome Steel Inner Shifter Lever
Includes stainless allen screw and washer.

VT No.	Speed
17-0966	5
17-0968	6

This V-Twin part is a steel forging. In this process, the steel is first fired as a red hot ingot, next a huge air hammer compacts and orients the grain structure into a rough shape of the part, subsequent hits form the part into its final shape. After which it is machined and heat treated which results in greater strength and resistance to wear. V-Twin supplies many products which are of forged construction, including connecting rods, frame components and kicker arms.



VT No. 17-0111
Installed

Posi-Shift by Sputhe Engineering is a positive stop mechanism that prevents miss shifts and limits the amount of rotation on each gear. Fits 1989-up 5-Speed. Can be used in earlier 5-Speed when shift drum is changed to new style with pressed in detent pins.

VT No. 17-0111



Billet Shift Arm fits 5 and 6-Speed Big Twin transmissions.
VT No. 17-0666



5-Speed Big Twin Transmission Shift Pawl Assembly includes shift shaft with lever, pin, lever and shaft springs & pawl as pictured.

VT No.	Brand	Year
17-0576	V-Twin	1986-up
17-0590	Sifton	1986-up
17-0596	Sifton	1989-up