



Star Hub Rebuild



1936-66 Internal Star Hub Component Kit includes internal rebuilding parts to assemble a bare hub. Everything pictured except hub. Includes standard rollers. Fits all interchangeable wheels

1936-66 if oversize rollers are needed order from our 9220 series in .0002 to .002.

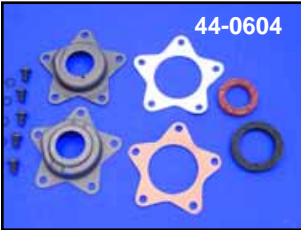
VT No.	Years	Finish
44-0413	1955-66	Chrome
44-0431	1941-54	Parkerized



Deluxe Star Hub Rebuild Kit fits 1936-66 interchangeable hubs, includes inner and outer stars, screws, gaskets, thrust washers, outer bearing sleeve,

snap rings, cork retainer washer and standard rollers.

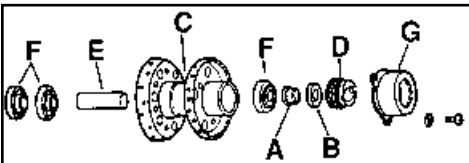
VT No. 44-0414



Hub Thrust Plate Kit includes inner star, grease fitting, and outer chrome or parkerized star. Replaces 43569-55.

VT No.	Finish	Fitting
44-0535	Chrome	With fitting
44-0559	Parkerized	With fitting
44-0604	Parkerized	Without fitting

1967-72 Hub



Internal Hub Parts for 1967-72 interchangeable hubs FL-FLH models.

VT No.	#	OEM	Item
44-0392	A	41196-55	Seal Spacer
14-0131	B	41210-55	Seal 5 pk
45-0673	C	43540-67C	Chrome Hub, Complete
45-0306	C	43540-67C	Chrome Hub, Bare
45-0758	C	43540-67	Black Hub, Bare
44-0526	D	43542-67	Locknut (Left Hand)
44-0310	E	43549-67	Inner Spacer
12-0331	F	43577-67	Bearing, each
44-0505	G	43592-70	Cover, Chrome

1967-72 Lock Nut and Seal Kit includes A, B and D.

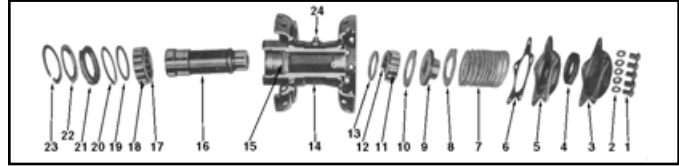
VT No 44-0408



Replica Star Hubs include all internal parts, completely assembled, for front and rear. 45-0799 is bare without internals.

VT No.	OEM	Year	Finish
45-0330	43540-36	1941-66	Chrome
45-0323	43540-36	1941-66	Black
45-0880	3958-36	1936-40	Black
45-0789	3958-36	1936-40	Black
45-0799	Bare	1936-40	Parkerized

V-Twin replicated the "Star" Hub in 1980 with over 6000 being produced. All internals interchangeable with original and replaceable with components from our list.



Star Hub Components. Available in packs for 1936-66 hubs. See complete kits on this page for rebuilding.

Index	Application	VT No.	OEM
1 & 2	Thrust Bearing Cover	8200-10	Chrome
	Screws & Lock washers	8201-10	Cadmium
		9670-10	Parkerized
4	Small Cork	15-0350	43570-35
3 & 5	Hub Thrust Plate Kit	44-0535	43569-55
3	Star Outer Cover, Chr.	44-0527	43566-35A
3	As above, prkrzd w/hole	44-0500	43566-35
3	As above, chrome	44-0465	43566-35
4	Small Cork	15-0350	43570-35
4, 6 & 21	Gasket and Seal Kit	15-0630	
4, 6 & 21	As Above GB	15-0637	
6	Star Gasket	15-0173	43576-35
6	Star Gasket	15-1054	James
7	Thrust Bearing		
	Adjustment Shims (10)	12-0708	43560-35
	.002 Shim	12-0720	
	.015 Shim	12-9917 (10pc)	
7 & 10	Thrust Washer (2)	44-0524	43563-35
9	Thrust Bearing Sleeve	44-0530	43556-35
11 & 18	Bearing Roller Set, 26 required		
	Std. Size	10-0319	9220
	.0002	10-0320	9221
	.0004	10-0321	9222
	.0006	10-0322	9223
	.0008	10-0323	9224
	.001	10-0324	9225
	.002	10-0325	
12	Roller Retainer, Small	44-0531	24721-30
13	Roller Retainer Thrust Washer, 1 used, each	44-0523	43552-39
14*	Wheel Hub Chrome	45-0330	43540-36
	Wheel Hub Black	45-0323	Assembly
	Wheel Hub 1936-40	45-0335	Assembly
15	Thrust Collar (for aftermarket hub)	44-0534	43561-39
16	Inner Sleeve 1939-up	44-0309	43549-36
17	Roller Retainer, Large	44-0532	43578-35
17	Roller Retainer Washer		
19	1 used, 10 pack	44-0522	43558-39
20 & 23	Lock Ring, 2 used		
	10 pack	12-0921	43554-35
21	Large Cork	15-0631	43571-35
21	Large Cork, James	15-0231	43571-35
22	Retainer, Cork Washer		
	1 used	44-0521	43564-35
24	Grease Fitting 10 pack	44-0533	9851

Note: 14, Hub is assembled with all internal parts.



Internal Bearing & Hardware Kit for 1967-72 front and rear hubs. All parts necessary to build or rebuild a bare hub. Includes 3 bearings, tube spacer, seal, seal sleeve & hub lock (Left Hand Thread). Complete.

VT No. 44-0410