



Cam Sets

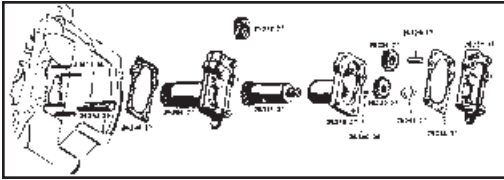
Replica Cam Sets by Sifton (with original manufacturer specs).

VT No.	Type	Year
10-2976	45"	1936-73
10-8183	45" WLDR	1936-73
49-8554*	WR	1936-73
10-2977	BT UL-ULH	1936-48
10-2981	SV	Shafts

*Note: Requires 49-8552 lifter tappet kit

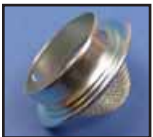


SV Oil Pump Parts



45 Feed Pump Parts for 1937-73.

VT No.	OEM	#	Item
49-0442	Complete		Pump Assembly (N)
49-0758	Body		Feed Pump
12-1478	Kit		A, M, J, K, I
12-0158	8816	A	Balls (50)
9408-22	Chrome	B	45's 1937-73 Bolt & Nut Kit
9409-22	Cadmium	B	45's 1937-73 Bolt & Nut Kit
9663-22	Parkerized	B	45's 1937-73 Bolt & Nut Kit
12-0421	26318-37	D	Oil Pump Drive Gear
12-1483	26270-37	E	Holder, Pump Vane 1937-73
12-1493	26270-41	E	Holder, Pump Vane 1941-73
12-1442	28284-37	F	Vane, pair
13-0161	26286-37	G	Spring, Vane
9523-1	26362-36	H	Check Valve Plug, Chrome
9524-1	26362-36		As Above, Cadmium
9525-1	26362-36		As Above, Parkerized
13-0114	26363-56	I	Check Valve Spring
12-1444	26369-41	J	Adjust Screw
12-1476	26383-32	J	Replica Screw
13-0160	26373-41	K	By-Pass Spring
12-1445	26381-37	L	Retainer
15-1185	—		Gasket Kit



Oil Strainer fits 1937-73 Flatheads. Kit includes strainer, gasket and pin.

VT No.	OEM	Item
12-1542		Kit
12-1512	24975-37	Oil Strainer
12-1173	333	Pin, 10 pk.
15-0214	24973-57	Gasket, 10 pk.



Oil Pump Fitting replaces stripped or broken fitting in cast iron SV feed or scavenge pumps fittings has 7/16" UNF thread with internal hex for installation.
VT No. 40-0512

Side Valve Scavenger Pump Parts

VT No.	OEM	Item
49-0444	Complete	Pump Assembly
9408-22	Chrome	Bolt Kit
9409-22	Cadmium	Bolt Kit
9663-22	Parkerized	Bolt Kit
12-1378	25302-37	Breather Spiral Gear
15-0649	26246-37	Gasket
12-1254	26320-37	Gear
12-1255	26326-37	Gear, Idler
12-1257	26331-37	Scavenger Gear
12-0204	26340-36	Key
12-0214	26341-37	Key Halves
12-0153	26343-39	Screen
12-1465	23383-32	Oil Adjusting Screw Kit
12-1446	26218-37	Body Only



Flathead Relief Pipe replaces 24912-37 on 1937-52 45's and 1937-48 BT Side Valve.

VT No. 12-1424



Breather Screen replaces 26343-39 on SV's.

VT No. 12-0153

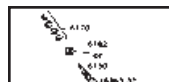
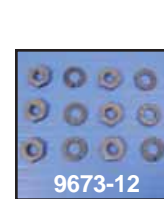


A-Long Oil Pump Nut with 1/4-24 thread for 1941-48 74 & 80 SV, 1941-54 45's.

VT No.	Finish
8719-1	Chrome
8721-1	Cadmium
9631-1	Parkerized

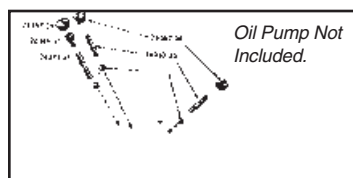
B-Standard 1/4 x 24 Hex Nut

VT No.	Qty	Finish
8110-12	12	Chrome
8111-12	12	Cadmium
9673-12	6	Parkerized



Oil Pump Adjusting Screw Kit fits BT and Side Valve, include screw, shims and washer.

VT No. 12-1465



Oil Pump Not Included.

1937-73 Side Valve Feed Pump By Pass and Check Valve Kit includes (3) springs, (3) caps, (3) balls and a check valve.
VT No. 12-1478