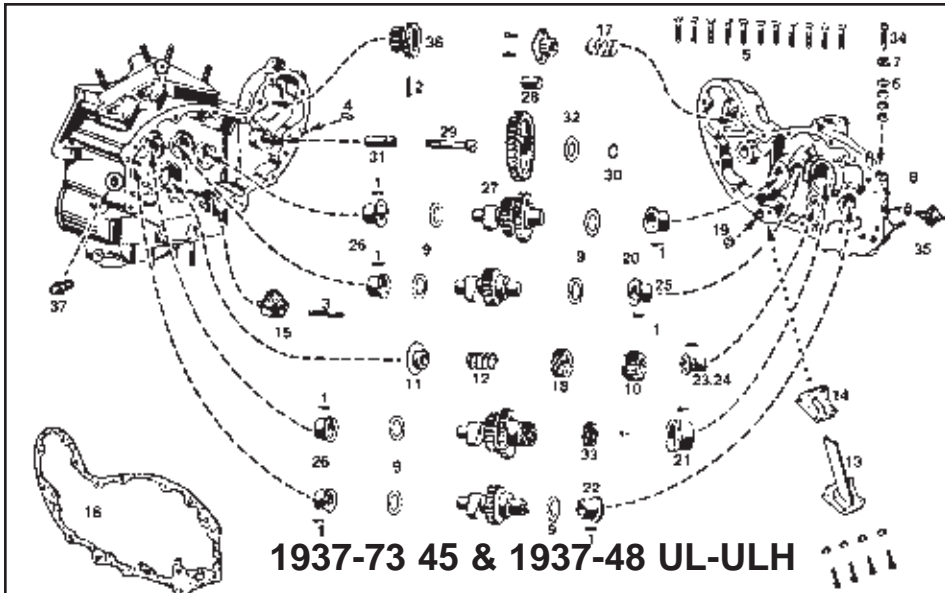




SV Pinion Hardware



1930-36 Big Twin and 45" Timer and Cam Bushings.

VT No. OEM Fits

10-8524 662-29 Timer Shaft

10-8525 662-30 Cam Gear Shaft

10-8526 662-34 Oiler Drive Shaft



VL Cam Shims for 1930-36.

VT No. OEM Size

10-8521 663-26 1/64"

10-8515 664-26 1/32"

45 SV	BT SV	OEM	#	Item	45 SV	BT SV	OEM	#	Item
12-1175	12-1175	271	1	Bushing Pin	10-2976	10-2977	Set	20	Cam Set, 4 pc
12-1185	12-1185	327	2	Gen Gear Pin	10-0709	10-0709	25586-37	20	Cam Gear Cvr Bushing
12-1173	12-1173	333	3	Strainer Pin	10-2540	10-2540	As Above		.005 Oversize
—	12-1166	377	4	Dowel Pin	10-0731	10-0731	25588-37	21	Cam Gear Cvr Bushing
9668-19	9668-19	2341	5	Cam Cover Screw, pkd	10-2507	10-2507	25590-37	22	Cam Gear Cvr Bushing
9413-19	9413-19	2341		Cam Cover Screw, cad	—	10-2512	25591-37	23	Pinion Bushing
9412-19	9412-19	2341		Cam Cover Screw, chr	10-2503	—	25593-37	24	Pinion Bushing
9985-24	9985-24	6150W	6	Adjuster Washer	10-2543	—	As Above		.005 O/S
37-0737	37-0737	6182	7	Adjuster Washer	10-2506	—	25595-37	25	Cam Gear Cvr Bushing
14-0154	14-0154	6440	8	Oil Switch Washer	—	10-2504	25599-37	26	Cam Gear Cvr Bushing
12-0705	12-0705	6769	9	Shim	10-2495	—	25601-37A	26	Cam Gear Cvr Bushing
—	12-1474	24010-37	10	Pinion Gear	—	12-1475	25775-37	27	Idler Gear
12-1473	—	24011-37	10	Pinion Gear	12-1259	—	25776-37	27	Idler Gear
12-1526	—	24696-39	11	Seal Ring	10-0716	10-0716	25785-30A	28	Idler Gear Bushing
—	12-1527	24696-40	11	Seal Ring	12-0197	12-0197	25794-30	29	Idler Gear Stud Screw
13-0105	—	24699-37	12	Pinion Spring	12-0915	12-0915	25810-15	30	Idler Gear Retaining Ring
—	13-9202	24700-37	12	Pinion Spring	10-0805	10-0805	25788-30	31	Idler Gear Stud
12-1424	12-1424	24912-37	13	Relief Pipe	10-0806	10-0806	Kit	31/28	Stud and Bushing Kit
15-0334	15-0277	24921-37	14	Relief Pipe Gasket	15-0217	15-0217	25811-11	32	Idler Washer
12-1512	12-1512	24975-37	15	Oil Strainer	—	12-0419	25851-37	33	Circuit Breaker Drive Gear
15-0879	—	25226-37	16	Cam Cover Gasket	12-1404	12-1404	26383-32	34	Adjuster Screw
—	15-0407	25227-37	16	Cam Cover Gasket	12-1401	12-1401	26550-38A	35	Oil Pressure Switch
—	15-0227	25227-37	16	Cam Cover Gasket	32-0550	32-0550	31071-37	36	Generator Drive Gear
13-0106	13-0106	25287-37	17	Breather Spring	7612-3	7612-3	63533-15	37	Oil Fitting, Cad
49-0654	49-0654	25281-37	17A	Seal Ring Plate	40-0514	40-0514	63593-15	37	Oil Fitting, Chrome
—	12-1378	25302-37	18	Oil Pump Drive Gear					
12-0421	—	26318-37	18	Oil Pump Drive Gear					
49-2562	49-2562	25350-37	19	Breather Valve					

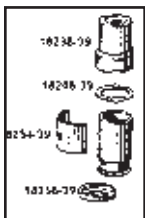
Valve Covers

Valve Spring Cover Set Screw type. Use on all 1930-38

Flathead. Set of four.

VT No.	Year/Model	Type
49-0119	1930-36 VL	Cadmium Set
49-0113	1930-36 VL	Chrome Set
49-0192	1937-38 UL	Cadmium Set
49-0243	1937-38 UL	Chrome Set
14-0173	1930-38 VL & UL Seal for Above	

*Note: Feature chrome lower portion only.



Late ULH Valve Cover Set includes 4 sets of all parts shown, for 1939-48 UL-ULH models.

VT No.	OEM	U/M	Item/Finish/Use
49-1965	18236-39	4	Complete, Chrome
49-0967	18236-39	4	Complete, Zinc
49-0961	18254-39	4	Clips, Chrome
49-0962	18254-39	4	Clips, Zinc
49-0963	18248-39	4	Locks, Zinc
49-2580	18258-39	4	Retainers, Zinc
13-0103	18247-39	4	Springs
15-0281	18245-39	10	Cork Gasket, Upper
49-1968	18246-39	4	Cork Retainer, Upper
15-0282	18257-39	10	Cork Gasket, Mid
15-0283	18259-39	10	Gasket, Lower



45 Valve Cover Sets for 1929-73.

VT No.	OEM/Model	Item	U/M
49-0938	45 Kit Complete	8 pc. Set, Zinc	Set
49-0700	45 Kit Complete	8 pc, Chrome	Set
15-0255	18630-26	Washer	10
14-0170	18260-29	Flat Seal Ring	10
14-0621	18260-29	Flat Seal Ring (James)	10
14-0510	11123	O-Ring	10
15-0256	18198-38	Guide Seal	10
49-0670	WR	Lower Cup Only	4