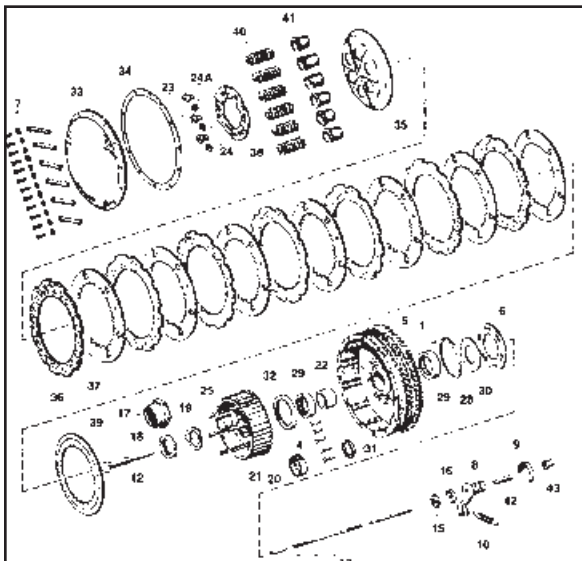




1970 & Earlier XL Clutch



Clutch Rod Installation for 17-1166 and 17-1165. See page 814.

VT No.	Year	Models
17-1158	1956-66	XLH
17-1157	1967-69	XLCH
17-1157	1967-69	XLH
	1970	XLCH

1970 and Earlier Clutch.

VT No.	#	OEM
17-1111	4	8215
18-3640	5	33162-67
17-1116	6	33379-57
18-2331	7	34897-53
18-1140	8	37201-54
18-1138	9	37210-47
13-0137	10	37222-52
17-1158	12	37279-56
17-1157	12	37280-67
14-0125	15	37339-53
N/A	16	37345-52
12-0539	17	37526-56A
12-0540	18	37527-67A
17-0912	19	37533-52A
17-0090	20	37535-52
18-3157	21	37556-57B
18-3161	21	37557-67
12-0372	22	37568-67
12-0510	23	37581-52
12-0574	24	37582-52
12-0551	24A	
18-8232	25	37584-64
18-3123	25	37584-67
17-0091	28	37721-54
12-0328	29	37722-52
17-0020	30	37731-52
17-0021	30	37732-52
17-0022	30	37733-52
17-0024	30	37735-52
17-0023	30	
17-0092	30	As Above Assortment, 1 each of above
14-0128	31	37740-57
14-0129	32	37741-67
18-3637	33	37760-52
15-0212	34	37762-52
18-3635	35	37876-52
18-1113	36	37985-52A
18-1115	37	37992-52
18-1141	38	38013-52
18-1116	39	38016-52
13-0140	40	38076-52
18-3642	41	38101-52
18-1139	42	38130-54
12-0519	43	38135-50

Item

- 5/32 x 19/16 x 9/32 Rivet
- Starter Ring Gear
- Starter Ratchet 9T
- Screw Retainer
- Release Worm and Lever
- Release Worm Cover
- Worm Lever Spring
- Release Rod Set 56-66 XL's 1967-69 XLCH
- Release Rod Set 1967-69 XLH, 1970 XLCH
- Release Rod Oil Seal
- Release Rod Oil Seal Ret.
- Clutch Hub Nut
- Clutch Hub Nut
- Clutch Hub Lockwasher
- Clutch Hub Spacer
- Hub Assembly, 1957-69 XLCH
- Hub Assembly, 1967-70 XLH, 1970 XLCH
- Clutch Hub Bearing Inner Race
- Large Hub Stud Nut
- Small Hub Stud Nut
- Nut Set 3 each, #23 & #24
- Clutch Hub Stud (6) 1964-66
- Clutch Hub Stud (6) 1967-70
- Sprocket Hub Washer
- Clutch Sprocket Needle Bearing
- Washer, Sprocket Bearing, 0.0955" thick
- Washer, Sprocket Bearing, 0.0975" thick
- Washer, Sprocket Bearing, 0.0980" thick
- Washer, Sprocket Bearing, 0.0925" thick
- Washer Sprocket Bearing, 0.1010" thick
- As Above Assortment, 1 each of above
- Clutch Hub Oil Seal, Kick Start
- Clutch Hub Oil Seal, Electric Start
- Clutch Cover
- Clutch Cover Gasket
- Releasing Disc
- Friction Plate Raybestos (7)
- Drive Plate (7)
- Pressure Plate
- Backing Plate
- Spring (6)
- Backing Plate, Spring Cup (6)
- Adjusting Screw
- Adjusting Screw, Locknut



Early XLH & XLCH Sprocket Cover. Kick and electric with starter cut out. Replaces 34871-67B, kick only replaces 34782-57A on 1952-70 Sportsters. Complete cover assembly includes cover, release worm adjuster screw, nut, oil deflector, spring and kicker spring stud.

VT No.	Type
43-0114	Polished Kick & Electric Cover
43-0135	Polished Kick Cover Only
43-0136	Chrome Kick Cover Only
18-1211	Release Kit
8886-2	Stud, Chrome
8887-2	Stud, Cadmium

Stock Sprocket Kicker Cover Screws

VT No.	Years	Type/Finish
8884-2	1954-70	Chrome
8885-2	1954-70	Cadmium
8886-2	1952-70	Pipe Mount Stud
8887-2	1952-70	As Above, Cadmium



1952-67 XLCH Cast Sprocket Cover features early Rib design, includes worm and hardware, replaces 34874-52A.

VT No. 43-0133



Rubber Cable Oiler Boot replaces 38690-55, for XL 1955-80. 5 pack.
VT No. 28-0401



Replica Clutch Adjuster Sleeve. Fits 1954-71, 7/16" hole levers. Zinc plated.
VT No. 37-8460



Clutch Cable Bracket secures cable to frame on 1952-E70 XL models. Parkerized finish. Replaces 38676-52
VT No. 37-9160



1954-70 Clutch Release Kits.
VT No. 18-1211

1954-70 Clutch Release Parts.

VT No.	OEM	Part
18-1211		Kit
18-1138	37210-47	Cover
18-1139	38130-54	Screw
12-0519	38135-50	Nut
18-1140	37201-54	Worm
13-0137	37222-52	Spring (10)



1952-70 Clutch Cable with adjuster.

VT No.	Item
36-0406	Cable Assembly
37-8460	Adjuster Only, Zinc
2576-1	Adjuster Only, Cad