



Advance Units



Points Conversion Kit. Both brands include everything necessary for direct replacement on 1970-78 BT,

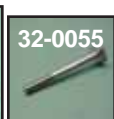
1971-78 Sportsters or for converting late model electronic-type back to points. Accel type available with microchip points, which will require a domed shaped points cover such as VT No. 42-0299 to accommodate taller points. The V-Twin unit includes stock style points & condenser and is available with stock needle bearing weights.

VT No.	Item	Type
32-7773	Accel Microchip	Stock
32-0136	V-Twin Points	Stock
32-0150	V-Twin/Points	Needle



Stainless Advance Unit features stainless base, heat treated weights & cam center screw for 1970-up mechanical advance ignition.

VT No.	Item	Brand
32-0178	Set	Sifton
32-0168	Set	V-Tech
32-0055	Bolt Only	VT



Advance Units feature heat treated weights. Order center bolt separately.

VT No.	Type
32-7510	With steel base
32-0055	Center bolt

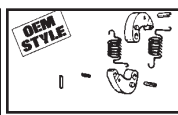


Competition Advance Unit features machined stainless steel shaft and plate, metallic coated weights and special wound springs for exact advance. Replaces 32505-78A for 1970-up, mechanical advance applications. Center screw included.

VT No.	Item	Brand
32-9037	Competition Unit	Rivera
32-9223	Rebuild	Rivera
32-9220	Complete with tuneable springs	V-Twin



Stainless Points Plate Screws replace 32606-82.
VT No. 32-0760



Automatic Advance Rebuild Kit includes 2 of the following: springs, weights, and 4 roll pins. For all 1970-78 Twins.
VT No. 32-0140



Blue Streak Sifton "Tuneable" Ignition Advance Assembly includes stainless advance base, points plate with "Blue Streak" points and condenser with hardware and 3 pairs of color coated springs which allow full advance at 1400, 2000 and 2600 RPM depending on which spring is selected.

VT No. 32-0713



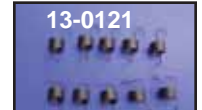
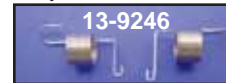
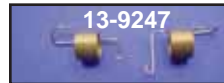
Mallory Ignition Plate fits 1970-99.
VT No. 32-5119



Points Plate Assembly available as stock point and condenser replacement or Accel Super plate with micro chip condenser and 32 oz. spring points. Both for 1970-78.

VT No.	OEM	Item
32-0549	32577-70	A-Point Plate Assembly
32-0112*	Accel	B-Super Plate Assembly
32-0042	32618-70A	Mount Plate Only
37-8809	1047	Point Mount Plate Screws
	7115, 6189W	Washer Assortment

*Note: 42-0299 Domed Style Points cover must be used.



1970-up Advance Weight Springs.

VT No.	Fits
13-9247	Severe Duty Advance Weight Springs for all Hi-compression and heavily modified engines. Also useful for applications experiencing detonation (pinging) or very erratic idle, pair
13-9246	Heavy Advance Weight Springs for slightly modified stock, low compression or mild stroker application, helps cure minor idle problems, pr
13-0121	Original type replacement. Uses premium grade spring steel, 10 pk



Tuneable Advance Unit features stainless base, heat treated weights cam bolt and 3 different color coded spring sets which allows full advance at 1400, 2000, and 2600 RPM depending on which springs are selected. Can be used with all ignitions, points, single or dual fire types which utilize an advance unit. Springs also available separately.

VT No.	Type	Item
32-9220	Stock	Kit
32-9261	Needle Bearing	Kit
32-7510	Stock Base Only	Base
32-0055	Bolt	

XL