



Battery Cover Kits



Chrome Battery Cover Kit includes both top and side covers with correct stainless steel strap. Note style of side cover.

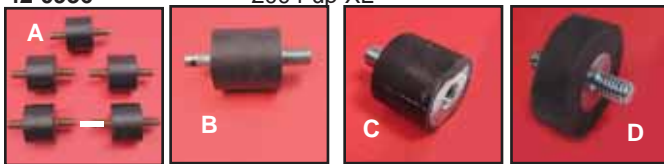
Chrome Battery Covers *Note:Fits AGM Battery.

Side	Top	Year/Model
42-0505	42-0512	1970-78 XLCH
42-0509	42-0513	1967-78 XLH
42-0504	42-0511	1979 XLH
42-0503	42-0511	1980-81 XLH
42-0502	42-0511	1982-up XLH
42-0714	42-0786	1997-up XLH
42-0770*	42-0786	1998-2003 XLH
42-0936	—	2004-up XL



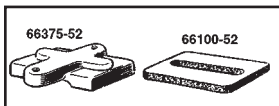
VT No.	Year	Model	Style
42-0576	1998-03	XL	Slotted
42-0547	1991-97	XL	Slotted
42-0548	1982-90	XL	Slotted
42-0549	1979 only	XL	Smooth
42-0575	1980-81	XL	Smooth
42-0542	1970-78	XLCH	Slotted
42-0557	1967-78	XLH	Ribbed

Battery Top Cover & Strap Kit. Help save time by ordering the proper cover and hold down strap.



Iso Mounting Rubber Studs. All types UNC threads 1/4" used on XL battery box and oil tank, 28-0619 used on FX dash.

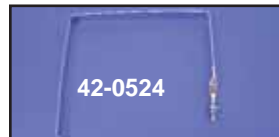
VT No.	OEM	#	Size	Type	Qty
28-0546	62563-65	A	1/4"	Male-Male	5
28-0549	62563-65T	A	1/4"	Male-Male	5
28-0418	w/Spring	A	1/4"	Male-Male	5
28-0547	62563-66	B	5/16"	Male-Male	Ea
28-0402	62569-94	B	5/16" x 1/4"	XL Oil Tank	Ea
28-0619	50235-63	C	5/16"	Male-Female	Ea
28-2247	69125-65	D	5/16"	Male-Male, horn	Ea



Chrome XLH & K Battery Top replaces 66375-52 on 1952-64, 6-Volt models.

VT No.	OEM	Item
42-0732	66375-52	Battery Top
28-2232	66100-52	Battery Pads, pair

VT No.	Application
42-5514	1967-78 XLH
42-5515	1970-84 XL Kick Only
42-5519	1997-03 XL



Replacement Stainless Battery Straps.

VT No.	OEM	Application
28-2217	66105-77	1979 XL
42-0514	66470-67	1967-78 XLH
42-0515	66470-70	1970-78 XLCH
42-0524	66476-73A	1982-up XL, XLS, XLX
42-0798	66476-98	1998-2003 XL
42-0127	66476-04	2004-up XL



2004-up Left Side Battery Cover. VT No. 42-0936