



# 1972-95 Hand Lever



**Chrome Contour Levers** designed for easy grip, pairs.

VT No.	Year
26-2170	1972-81
26-2171	1982-95
26-2162	1982-95 Polished
26-2110	1982-95



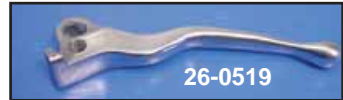
**Chrome Soft Pad Hand Levers** feature a comfortable rubber insert  $\frac{3}{8}$ " thick locked into a tongue-and-groove channel.

VT No	Fits
26-1975	1982-95
26-1974	1972-81



**Chrome Power Lever Sets** replace stock levers on years listed.

VT No.	Years
26-0580	1972-81
26-1972	1972-81
26-1973	1982-95



**Clutch & Brake Levers** are available in polished or chrome. Sold individually.

VT No.	OEM	Years	Finish	Type
26-0527	45016-72	1972-81	Chrome	Brake
26-0528	45016-72	1972-81	Polish	Brake
26-0517	Power	1972-81	Polish	Brake
26-0519	Power	1972-81	Polish	Brake
26-0510	Ball End	1941-68	Polish	Clutch/Brake
26-0531	45017-82	1982-95	Chrome	Clutch
26-2136	45017-82	1982-95	Polish	Clutch
26-2133	45017-88	1988-95	Chrome	Clutch
26-0532	45016-82	1982-95	Chrome	Brake
26-2135	45016-82	1982-95	Polish	Brake

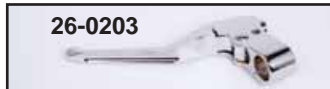


## GMA Handlebar Control



**GMA Master Cylinders** with switch housing to accept stock switches. Order matching clutch lever assembly and left side switch housing separately.

VT No.	Bore	Year	Lever Assy	Year
26-0632	$\frac{5}{8}$ "	1973-81	26-0636	1972-81
26-0633	$\frac{3}{4}$ "	1973-81	26-0637	1982-95
26-0634	$\frac{5}{8}$ "	1982-95	26-0640	1988-95
26-0635	$\frac{3}{4}$ "	1982-95	26-0641	1996-up
26-0638	$\frac{5}{8}$ "	1996-up		
26-0639	$\frac{3}{4}$ "	1996-up		
23-1720	$\frac{5}{8}$ "	Rebuild kit		
23-1716	$\frac{3}{4}$ "	Rebuild Kit		



**Universal Mini Hand Controls** are available in clear anodized or chrome. Feature a lower bar positioning for cleaner look, smaller reservoir and slim lever design & including two lids style for customizer preference. Master cylinder and clutch assemblies sold separately. Master cylinder is  $\frac{5}{8}$ " bore and does not have provision for brake light switch. Clutch assembly is for all 1988-up models with cable operated clutch.

VT No.	Item	Finish
26-0201	Master Cylinder	Chrome
26-0202	Clutch Lever Assy	Clear Anodized
26-0203	Clutch Lever Assy	Chrome

994



**GMA Universal Billet Front Master Cylinder and Clutch Lever Assemblies** are available in a clear anodized or chrome plated finishes.

Master cylinders are designed to fit all 1" handlebars and clutch lever assemblies are available for 1" handlebars pre 1982 without indents or 1982-up handlebars with indents. Universal controls will not accept switch housings.

Chrome	Anodized	Item
23-1789	23-1755	$\frac{5}{8}$ " Master Cylinder
23-1790	23-1768	$\frac{3}{4}$ " Master Cylinder
26-2251	26-2157	Clutch Lever Assembly Pre82 Bars
26-2252	26-2183	Clutch Lever Assembly 1982-up Bars