



1973-84 FLH Glide



24-2034 Installed

1972-84 FLH Style Single Disc Fork Assembly includes the complete fork kit with chrome sliders, with the addition of the chrome headlamp cowl kit, 16" chrome wheel, chrome or black caliper with 10" drilled steel brake disc, speedometer drive and FLH style fender. Order tire, tube, handlebars, risers and other parts shown separately.

VT No. Typ
24-2034 Chrome
24-2037 Chrome Cowl With Chrome Caliper

Order related parts separately.

- | | |
|---------------|--------------|
| VT No. | Item |
| 51-0258 | Windshield |
| 25-0399 | Bars |
| 33-2028 | Spotlamp Kit |
| 46-0302 | Tire |
| 46-0114 | Tube |
| 36-0544 | Speedo Drive |
| 50-0124 | Fender |



FLH Fork Assemblies. Available as single disc model 1972-84 type, which accepts large banana caliper to accept a 10" brake disc, include chrome slider covers, chrome triple trees with lower tree that includes padlock tab, which accepts aluminum cowling only, chrome tapered aluminum sliders with stock length tubes and all 1977-up type internals installed. Axle and nut, neck bearings top and crown nut included. Lower sliders and tube assembly with internals also available in pairs.

- | | | |
|---------------|-------------|--|
| VT No. | Item | Slider |
| 24-0520 | Kit Stock | Chrome |
| 24-0782 | Kit Stock | includes black triple trees, stainless fork slider covers. |
| 24-9943 | Kit Custom | Forks include 24-0829 black trees which has a solid mount top. Trees with 4 3/4" C/C riser mount holes. Accepts 24-9900 top tee covered and tins |
| 24-1240 | Kit | Chrome Leg/Tree Assembly |
| 24-0783 | Leg Assy | Right and Left Stock |
| 24-0519 | Leg Assy | Right and Left with Chrome Lower Sliders |
| 24-0084 | | Lower Sliders Only Right and Left |

*Note: V-Twin Fork Assembly is shipped complete, Axle, Nut, Spacer, Top Nut, Bearing, Cone Nut and Dust Cover. Sliders & Tubes are assembled.

Adjustable Fork Assembly



24-0790

Adjustable Fork Assemblies. FLH include black adjustable rake triple tree set, polished sliders with 1977-up type internals installed, stainless slider covers, axle and nut, fork bearings, and cone nut. 24-0790 and 24-2525 accepts 23-2219 caliper. 24-0550 accepts left side brake component kit VT No. 23-9218. Both units accept VT No. 28-0221 Riser Bushing Sets and VT No. 24-9910 top tree cover which place riser stems 3.5" center to center.

VT No. Type/Year
24-0550 Left Side Drum 1949-58
24-0790 Disc 1972-84
24-2525 1972-84 Disc With Chrome Legs



24-9957



24-0828

Adjustable Fork Tube Plugs.
VT No. OEM Year
24-9957 45777-50 1950-76
24-0828 45777-77 1977-84



Adjustable Position Tabs replace 45710-58 on all adjustable forks 1950-up, set.

VT No. 24-0124



1948-84 FLH-FXWG Fork Stem Lock Tab. replace broken, bent or missing on stock lower triple trees, to be welded on.

VT No. 51-0103



24-0797



24-0004



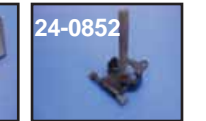
24-1055



24-1069



24-0817



24-0852

Black Adjustable Fork Tree Kit is available for 1949-76 FLH, 1977-84 FLH, 1980-86 FXWG 41mm fork legs. Showa type is 1977-up. Kits feature swivel type plugs which are included. Lower tree has two positions for changing rake and fork lock tab. Kits use VT No. 28-0221 rubber bushing kit. Use 24-9910 top tree cover for kits.

- | | |
|---------------|---|
| VT No. | Fits |
| 24-0799 | 1949-76 FLH Complete Set, Black |
| 24-0797 | 1977-84 FLH 80-86 FXWG Complete, Black |
| 24-0004 | As Above without Tabs |
| 24-1055 | Partial Kit |
| 24-0817 | Top Tree Only 1973-up |
| 24-0852 | Lower Tree only with Stem |
| 24-1069 | Lower Stem |
| 24-0928 | Lower Tree only with Stem with damper |
| 24-0495 | Lower Cross Bar only |
| 24-0596 | As Above without Tabs |
| 24-0124 | 45710-50 Adjustable Position Tabs |
| 24-9957 | 45777-50 E. Top Plugs 1949-76, pair |
| 24-0828 | 45777-77 L. Top Plugs 77-84 Showa type, pr. |
| 37-9170 | Top Tee Bolts with Lock Tabs, Kit |
| 17-0936 | 45752-50 Lock Tabs |
| 24-0197 | Top Nut Kit |
| 37-1545 | Pivot Bolt |



Glide Drum Brake Fork



1949-59 Units feature early style solid mount trees.



24-0789

Complete Fork Assembly

VT No.	Year	Brake Side	Slider
24-0789	1949-59	Left	Polish
24-0755	1949-59	Left	Chrome
24-0756	1960-66	Left	Polish
24-0757	1960-66	Left	Chrome
24-0866	1967-68	Left	Polish
24-0880	1969-71	Right	Polish
24-0881	1969-71	Right	Chrome

Leg Assembly Only			
VT No.	Year	Brake Side	Slider
24-0791	1949-68	Left	Polish
24-0754	1949-68	Left	Chrome
24-0845	1969-71	Right	Polish
24-0846	1969-71	Right	Chrome

VT No. 24-0756 Shown with VT No. 24-0501 cowl set sold separately



DRUM

Glide Fork Assemblies feature black lower triple tree without lock tab and accept a left or right side drum brake assembly with chrome or polished slider.

1949-59 Style has black upper tree with solid holes, 3.5" center to center spacing. To accept glide post riser VT No. 25-2175.

1960-71 Style has black top tree with 3" center to center spacing which will accept rubber bushing kit VT No. 28-0221. The VT No. 25-2134 riser clamp fits two piece bars. The VT No. 25-2132 Riser Kit fits one piece bars.

Both VT No.'s 25-2134 and 25-2132 riser kits allow the use of 24-0250 handle-bar clamp cover on aluminum cowl. Both forks accept VT No. 24-0251 aluminum cowl set or 3 piece chrome VT No.'s 24-9913 or 24-9909 stainless panel set, not included. Includes slider covers VT No. 24-0190 in chrome. Both have polished aluminum lower sliders with late 1977-up type inter nals installed in 41mm stock length hard chrome fork tubes. Axle nut, neck bearing, top crown nut and dust covers included.

Note: The V-Twin™ Fork Assembly is shipped complete with axle, axle nut, spacer, top nut, bearings, cone nut and dust cover. Sliders and tubes come assembled. Nothing else to buy.



Fork Installation Kits for 1949-66 FLH. VT No. 24-0777

Hardware



Glide Axle Leg Caps. Cast for 1949-77 FLH type. Replaces 45836-48.

VT No.	Finish
24-0327	Zinc
24-0337	Chrome



Lower Leg Drain Allen Plug replaces 45830-48 on 1948-76 FLH lower legs.

VT No.	Finish
37-8777	Zinc
9909-2	Chrome
37-0062	SS



1977-99 Big Twin Glide Lower Leg Cap.

VT No.	OEM	Finish
24-0328	45832-77	Polish
24-0336	45832-77	Chrome



Weld On Tabs of cast alloy to restore FLH Glide legs to accept fenders, must be welded on to stock or turned down legs. Four piece set.

VT No. 24-0152



Chrome Fork Slider Bottom Cap Stud & Nut Kit includes locknuts and studs.

VT No.	Year	Model
8813-4	1949-77	FLH Wideglide
8826-6	1973-up	Showa & Kayaba

41mm 10" Dual Disc Fork Assembly



41mm Glide Fork Assemblies include forged chrome replica triple trees and hard chrome tubes on stock length forks and chrome tubes on overstock length and polished or chrome lower legs with all internals installed less hardware. Stock overall length is 31".

FXWG Style Dual Disc Fork/Wheel and Caliper Assemblies to fit 1948-99 Big Twin FL-FX-FXWG features polished or chromed lower sliders without reflector boss, hard chrome fork tubes and internals installed. Includes chrome trees with 1" diameter stem and frame lock tab, neck bearings, axle spacer and top nut. Stock length is 31" overall. Kit also includes 21" all chrome assembled wheel with bearings, drilled 10" steel brake discs with chrome screws, and choice of black or chrome dual disc calipers complete with pads. 24-9947 has smooth lower legs.

VT No.	Item	Caliper	Sliders
24-2000	Kit	Chrome	Polished
24-2011	Kit	Chrome	Chrome

Fork Assembly Only

24-0779	Fork Assembly		Polish
24-9974	Fork Assembly		Chrome
24-9947	Fork Assembly		Polish

Fork Installation Kit fits 1973-84 FL, 1980-83 FXWG. VT No. 24-0776

The V-Twin™ Fork Assembly is shipped complete with axle, axle nut, spacer, top nut, bearings, cone nut, dust cover, triple trees and fork tubes & sliders. Fork tubes and sliders are fully assembled with internals. Final assembly of the remaining components is done by the dealer. Every leg assembly is shipped dry. We recommend use of the appropriate fork oil such as Type B. The amount of fork oil to add varies by model. A FX will need about 6 oz per leg, a FL will need about 8.5 oz per leg and a FXWG need about 10 oz per leg. Due to oil cling, dry for leg needs about 1 oz more to fill than a drained leg would require.

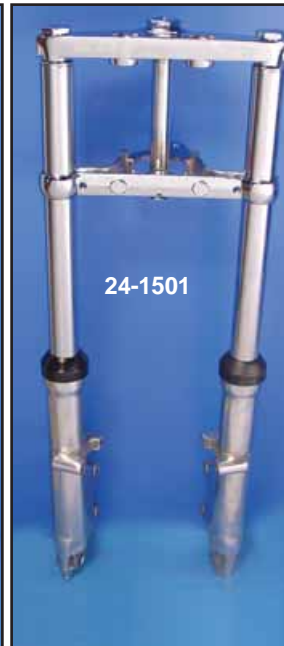
Bare Fork Assembly



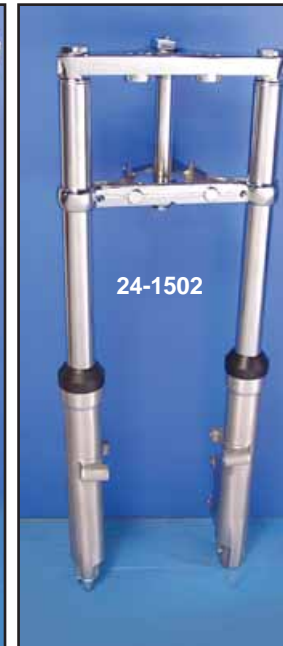
24-1532



24-1525



24-1501



24-1502



FXWG Dual Disc Fork Assembly Front Wheel Speedo Drive Kit will allow use of 2:1 ratio speedo. Kit includes axle, speedo drive and adapter flange.

VT No. 36-0547



Fork Installation Kit includes 2 bearings, dust covers, top nut axle and related hardware. Fits 1980-83 FXWG. 2 Disc. VT No. 24-0776

	(A) FXWG, Dual 10"		(B) FXST, Single 11.5"		(C) FXST, Dual, 11.5"	
	Polish	Chrome	Polish	Chrome	Polish	Chrome
Stock	24-1500	24-1525	24-1502	24-1532	24-1501	24-1546
2"	24-1503	24-1526	24-1509	24-1533	24-1515	24-1540
4"	24-1504	24-1527	24-1510	24-1534	24-1516	24-1541
6"	24-1505	24-1528	24-1511	24-1535	24-1517	24-1542
8"	—	—	24-1512	24-1537	24-1518	24-1543
10"	—	—	24-1513	24-1538	24-1519	24-1544
12"	—	—	24-1514	24-1539	24-1520	24-1545

Bare Fork Assembly includes stock leg assembly with hard chrome tubes on stock length forks and chrome tubes on overstock length and polished or chrome lower legs with all internals installed, with chrome triple tree set, less hardware. Stock overall length is 31".

Fork Installation Kit includes 2 bearings, dust covers, top nut axle and related hardware.

VT No.	Type	Year	Model
24-0776	1 Disc	1980-83	FXWG
24-0774	1 Disc	1984-99	FXST
24-0833	1 Disc	1986-99	FLT
24-0772	2 Disc	1984-99	FLT
24-1158	2 Disc	2000-07	FLT
24-0773	2 Disc	1986-99	FLT



35 mm Fork Kit



35mm FX-FXR Fork Assembly with Cast Lower Sliders.

Complete Narrow Glide Fork Assemblies for FXE and FXR.

Dual	Year	Model
24-8550	1977-84	FX-FXE
24-8551	1982-83	FXR



Chrome Lower Slider Set Only fits 1977-82 dual disc 35mm forks. **VT No. 24-0541**



Fork Stem Lock Tab replace broken, bent or missing on stock lower triple trees, to be welded on. Fits 1971-84 FXE.

VT No. 51-0102



Lower Tree Applications.

VT No.	OEM	Fits	Tube Size(mm)
24-0804	45567-71	1971-72 FX's Only	33.4
24-0805	45608-77A	1973-83 All FX Models	35
24-0827	As Above	Chrome	35



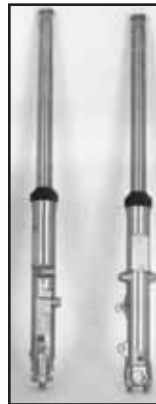
Lower Stem Pinch Bolts.

VT No.	Type	Fits	Finish
37-8834	Hex	1973-86 FX	Zinc
37-9220	Allen	1973-86 FX	Chrome



1973-83 Narrow Glide Axle Cap, alloy finish. Fit FX models 35 and 39 mm.

VT No.	OEM	Fits
24-0505	45410-75	Left
24-0504	Chrome	Left
24-0507	45994-77	Right



Fork Tube & Slider Assembly available in right and left pairs, completely assembled. Units have hard chrome fork tubes, and either polished or chrome lower sliders, with springs and all internal components installed. *Note: OE as noted.

35 mm Fork Tube & Slider Assembly

VT No.	OEM	OEM	Disc	Fits	Slider
24-9969*	45900-80	45901-80	Dual	1977-83 FX	Polish
24-0589	As Above	Chrome	Dual	1977-83 FX	Chrome
24-9938	45900-80	45901-80	Dual	+2"	Polish



Top Triple Tree for FX with 33.4 or 35 mm tubes.

VT No.	OEM	Year	Finish
24-0801	45739-62B	1954-72	Cast
24-0802	45738-73	1973-86	Cast
24-0803	45738-73	1973-86	Polished
24-0826	45736-78B	1973-86	Chrome



Lower Fork Stem Covers for FXR-FXD 1957-85 with 35mm forks. VT No. 42-0290 can be installed without disassembling forks. VT No. 42-0308 replaces 45750-70 in one piece style.

VT No.	Type
42-0308	1 Piece
42-0290	3 Piece
8757-8	Allen Screws for Above



33.4 & 35 mm Fork Plug



E-Z Fill Fork Tube Top Plugs feature small oil fill cap built in to fork tube top plug which will allow fork oil change/fill without removing top fork cap. Pairs.

VT No.	Type	Fits
24-0862	35 mm	1973-85



35 mm Taper-Top Socket Fork Cap Set.

Unique tapered style uses hex wrench for installation. Fits 1973-84 FX for Showa Kayoba.

VT No. 24-0850



Fork Tube Spring Retainer and Pin Wrench Kit includes 2 retainers for 1952-72 Sportster and pin wrench for installation and

removal of retainers.

VT No.	Item
7700-3	Kit
7701-2	Retainer only, pair



Chrome Domed Top Bolt fits 35 mm.

VT No.	OEM	Fits
7622-1	45993-73	1973-85 FX
37-8988	As Above	Pair
24-0616	Washer	(10)



Chrome Top Fork Tube Plug fits 1952-71 33.4 mm tubes. Replaces 45756-59. Sold each. **VT No. 7621-1**



Fork Tube

Attention!!
 These fork tubes have been manufactured and tested for exact fit and application per model. It can be difficult to identify the front end assemblies because they may not always be original equipment. Before installing, compare old and new tubes. Be sure the stock top plugs fit into the new fork tubes. To avoid scratching the chrome, we suggest that the tubes be lightly rubbed with oil before installing into fork legs. Be absolutely sure you have the right tubes before you install them. No fork tubes can be accepted for return that are scratched or damaged due to improper installation or handling.



33.4mm

1954-72 XL and 1971-72 FX,

- 24-0415 Stock 22 3/4" replaces 45953-71
- 24-0012 Stock 22 3/4" replaces 45953-71, Hard Chrome
- 24-0416 2" over stock
- 24-0417 4" over stock
- 24-0418 6" over stock
- 24-0419 8" over stock

35mm

1975-83 XLH-XLCH-XLCR, 1983 XLX-XLS and

1976-83 FX-FXEF, Showa Fork. 35mm.

- 24-0440 Stock 23 1/4", replaces 45407-75
- 24-0013 Stock 23 1/4", replaces 45407-75 Hard Chrome
- 24-0425 2" over stock, replaces 45644-77
- 24-1351 2" over stock, replaces 45644-77, Hard Chrome
- 24-0426 4" over stock
- 24-0427 6" over stock
- 24-0428 8" over stock

1979-82 XLS and 1977-83 FXS-FXB-FXSB-FXR-FXRS models, Showa Fork. 35mm.

- 24-0425 Stock 25 1/4" replaces 45644-77
- 24-0014 Stock 25 1/4" replaces 45644-77, Hard Chrome
- 24-0426 2" over stock
- 24-0427 4" over stock

1973-74 XL and 1973-77 FX-FXE, Kayaba Fork. 35mm.

- 24-0420 Stock 23 1/2", replaces 45977-73
- 24-0015 Stock 23 1/2", replaces 45977-73, Hard Chrome
- 24-0421 2" over stock
- 24-0422 4" over stock
- 24-0423 6" over stock

Note: Fork tubes that have been installed into triple trees are not returnable as the installation mars the chrome finish.

Fork Tubes are precision machined with ground finish for fit and quality. Available in chrome or hard chrome as stock. Sold in pairs.

41mm

FL-FLH Fork Tubes

1949-E77 FL models, 41mm.

VT No.	Item	Finish
24-0400	Stock 20", replaces 45950-48	Chrome
24-0023	Stock 20", replaces 45950-48	Hard Chrome
24-0024	As above machined steel	Plain Steel
24-0401	2" over stock	Chrome
24-0402	4" over stock	Chrome
24-0403	6" over stock	Chrome
24-0404	8" over stock	Chrome
24-0405	10" over stock	Chrome

41mm FL-FLH

L1977-84 FL-FLH, 1980-83 FLT-FLHT, 41mm.

- 24-0406 Stock 20 7/8", replaces 45825-77A
- 24-0025 Stock 20 1/2", replaces 45825-77A, Hard Chrome
- 24-0407 2" over stock
- 24-0408 4" over stock
- 24-0409 6" over stock
- 24-0059 6" over stock, Hard Chrome
- 24-0410 8" over stock
- 24-0030 8" over stock, Hard Chrome
- 24-0044 10" over stock
- 24-0082 12" over stock
- 24-0083 14" over stock

FXWG-FXST-FXDWG

1980-83 FXWG-FXD, 41mm

- 24-0408 Stock Length 24 7/8", replaces 45417-80
- 24-0026 Stock Length 24 7/8", Hard Chrome
- 24-0409 2" over stock
- 24-0059 2" over stock, Hard Chrome
- 24-0410 4" over stock
- 24-0030 4" over stock, Hard Chrome
- 24-0044 6" over stock
- 24-0082 8" over stock
- 24-0083 10" overstock



1949-76 Leg Assembly includes all internals.

VT No.	Finish
24-0032	Hard Chrome
24-0999	Raw

41mm Fork Tube & Slider Assembly



Fork Tube & Slider Assembly available in right and left pairs, completely assembled. Units have hard chrome fork tubes, and either polished or chrome lower sliders, with springs and all internal components installed. ***Note:** OE as noted.

VT No.	Disc	Fits	Slider
24-9917	Dual	1980-83 FXWG	Polish
24-0516	Dual	1980-83 FXWG	Chrome
24-0763	Dual	1980-83 FXWG	Smooth Legs Polish
24-0519	Single	1973-84 FLH	Chrome
24-0084	Single	1973-84 FLH	Chrome



Fork Damper Tube



Fork Damper Tube Kit includes for 2 sides, damper tubes with rings, screws and washers, lower stops, slider seal washers and retaining rings.

VT No.	Fork Type	Fits	MM
24-0136	Wide Glide	1949-76 FLH	41
24-0447	Showa 1977-84	FLH	41
24-0445	Showa 1980-83	FXWG	41
24-0454	Steel Leg	1971-72 FX	33.4
24-0452	Kayoba 1973-76	FX	35
24-0446	Showa	1976-83 FX	35

24-0678 Fork Damper Tubes less hardware, pairs.

VT No.	OEM	Fits
41mm		
24-0133	46100-48	1949-76 FLH
24-0820	45418-80	1980-83 FXWG
24-0147	45831-77	1977-84 FLH
35mm		
24-0456	45913-84	1984-86 FXR
24-0096	45409-75	1975-83 FX, Showa
24-0675	45412-75	1975-86 Nylon Ring

Fork Internal

Fork Bushings.

VT No.	OEM	Fits
24-0145	45818-52	1952-72 FX, 4 piece
24-0853	45940-80	1980-83 FXWG



Damper Tube Screw.

VT No.	OEM	Type/Model
24-0188	45995-73	Kayoba, 1973-86
24-0787	45405-75A	Screw pair w/ washer, showa
24-0786	Showa	Screw only, 5 pk
24-0328	45832-77	Leg Cap, Showa

1973-76 Kayoba Fork Internals, sold in pairs.

VT No.	#	OEM	Item
24-0457	A	45926-73	Valve Assembly
24-0189	B	45978-73	Tube Piston
12-0945	C	45979-73	Piston Snap Ring
24-0219	D	45985-73	Top Spring Collar
12-0988	C	45932-73	Upper Snap Ring

Fork Internal Kit includes springs, damper parts and plugs for FLH.

VT No.	Years
24-0743	1949-76
24-0744	1977-84

24-0258 Lower Damper Tube Stop, sold in pairs.

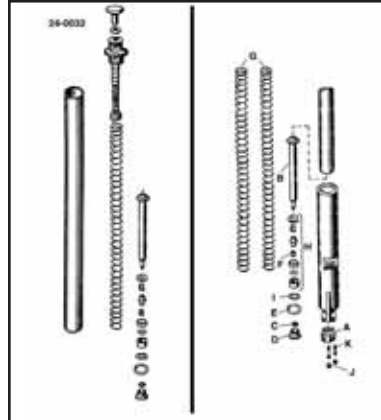
VT No.	OEM	Fits
24-0129	46121-48	1949-76 FLH
24-0459	45918-73	1973-77 FX Kayoba
24-0094	45402-75	1976-83 FX Showa
24-0258	45834-77	1977-83 FL-FXWG

Lower Damper Tube Springs.

VT No.	OEM	Fits
13-9210	46062-71	1971-72 FX, pair
13-1945	43855-77	1977-up FL-FXWG-FXST, pair
13-9160	45382-83	1983-86 FXR-FX, 10 pk



1949-77 BT Glide Front Fork Damper Set for both sides.
VT No. 24-0136



Replica 1949-76 BT

Glide Bushing Set includes 2 long and 2 short bushings.

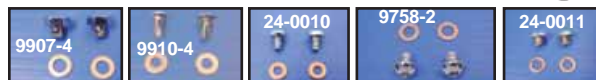
VT No. 24-0132

Front Fork Damper Parts

for 1949-76 FL Glide Forks. 24-0032 leg set includes tubes with all internal parts installed.

VT No.	#	OEM	Item
24-0327	A	45836-48	Leg Cap
24-0133	B	46100-48	Damper tube only, pair
15-0218	C	46111-48	Gasket
15-0219		46125-48	Upper Gasket
15-0220		45850-48	Felt Washer
24-0129	D	46121-48	Lower Damper Bushing, pair
12-0920	E	46172-48	Retaining Rings, 10 pk
13-9156	F	46161-49	Damper Valve Spring, 10 pack
24-0907	G	46051-49A	Fork Spring, pr
24-0643	H	46161-49	Damper Valve Kit
12-0707	I	45826-49	Damper Shim
8813-4	J/K	7725	Studs and Nuts
		45840-48	
24-0032			Leg Assembly, pair

Fork Drain Plug



Fork Drain Screws are supplied with washers, pair.

VT No.	OEM	Use
9907-4	46201-52	1952-72 XL-K
	6218W	Chrome
9908-4	As Above	Cadmium
9909-2	45830-48	1948-E77 Chrome
9910-4	45790-80	1973-up Showa
	45986-73	
24-0010	45790-80	1976-up Showa
9758-2	45858-77	1977-up FLH, 1980-up FXWG
24-0011	45858-77	1977-up FLH, 1980-up FXWG

Drain Screw Fiber Washers available in 10 packs.

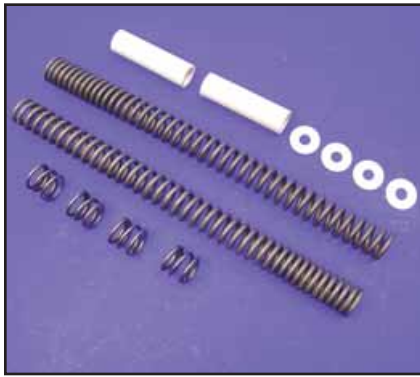
VT No.	OEM	Years	Use
14-0959	6218W	1952-72	Early XL
14-0019	45986-73	1973-75	Kayoba
14-0020	45403-75	1976-up	Showa

Damper Tube Washers in 10 pack.

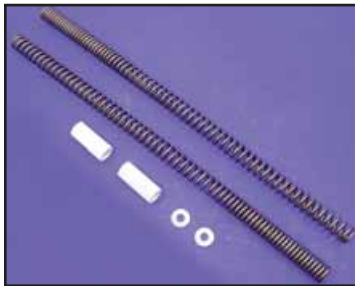
VT No.	OEM	Model
14-0017	45992-73	1973-74 XL Kayoba
	Fiber	1973-76 FX
14-0018	45406-75	1975-up XL Showa
	Copper	1976-up FX



Fork Spring



Progressive Suspension Fork Lowering Kit comes with Progressive rate fork springs and spacers. Each kit can be installed at two different levels to lower fork 1" or 2". Fits 1984-up FXST-FLST, 1993-up FXDWG, 1980-up FLH-FLT, 1978-86 FL-FXWG.
VT No. 24-1561



Progressive Suspension Fork Springs feature high quality, high performance replacement fork springs eliminate front end sag, reduce nose dive under braking, improve cornering stability, increase ride comfort and allow forks to utilize full travel. Sold in pairs.

VT No.	Size	Fits
24-2040	35	1983-87 FXRT, 1982-87 FXR-FXRS, 1985-86 FXRD, 1973-86 FX-FXE-FXS-FXSB
24-0159		1980-83 FXWG
24-0161		1975-82 FX



Fork Tube Spring Sets feature high tensile strength wire construction with ground ends. Sold in pairs for OEM replacement per the factory number. For more fork spring applications check factory parts book.

VT No.	Year	Model
33.4mm		
24-0900	1971-72	FX-XLH
35mm		
24-0901	1973-77	FX
24-0904	1976-83	FX-FXE
24-0903	1977-83	FXS-FXS-80-FXB
24-0906	1982-83	FXR
41mm		
24-0907	1949-77	FL-FLH
24-0908	1977-84	FLH, 1980-83 FLT
24-0902	1980-83	FXWG



41mm Street Tough Fork Springs by 20th Century Suspension. Progressively wound springs are made using drawn spring wire. Eliminates front end sag, reduces nose dive under braking and improves stability. Fits 1949-up FL-

FXWG-FLT.
VT No. 24-0165

Fork Boot



2 Piece Chrome Fork Boot Cover Sets install overstock rubber fork boot by the unique interlocking springs supplied with the kit to securely hold boot covers in place.

VT No.	MM	Year	Model
24-9992	35	Pre1987	FX-FXR
24-9993	41	1980-up	FXWG-FXST-FXDWG



Black Rubber Fork Boots are designed for a better fit and improved sealing and wiping action. Sold pairs.

VT No.	Year	Model	MM
28-0900	1971-72	FX	33
28-0902	1973-77	Kayaba	
		FX-FXE-FXS-FXFS	35
28-0903	1975-87	Showa FX-FXE-FXS-FXFS-FXR	
28-0905	As Above	White	35
28-0901	1949-E77	Wide Glide	41
28-0912	As Above	White	41
28-0904	1984-up FXST		41
	1980-83 FXWG		



Chrome Wiper Boot Covers are die-cast to fit over the stock rubber fork wiper boot.

VT No.	Type	Year	MM
24-0104	Kayoba	1973-75 FX	35
24-0105	Showa	1976-83 FX	35
24-0106	Wide Glide	1949-77 FL-FLH	41
24-0098	Wide Glide	1980-83 FXWG, 1984-90 FXST	41
24-9049	Wide Glide	1980-up ST	41



41mm Chrome Fork Boot Covers install without disassembly of fork. No tools required! Fits 1980-up FXWG-FXST-FXDWG.
VT No. 24-9941



Fork Seal



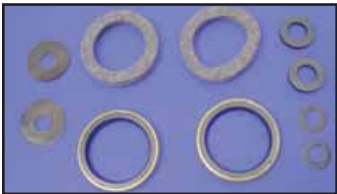
14-0938 V-Twin Deluxe Seal Kits include seals, gaskets, snap rings, washers and o-rings. James Kits include seals and o-rings only.

James	VT No.	MM	Year	Models
14-0036	14-0014	41	1948-76	FLH
14-0037	14-0938	41	1977-84	FLH-FLT-FXWG
—	14-0043	33.4	1952-70	XL-XLH, Gasket only
14-0039	14-0940	33.4	1971-72	FX
14-0040	14-0941	35	1973-77	FX, Kayoba
14-0041	14-0942	35	1976-83	FX-FXR
		35	1975-84	FX Showa



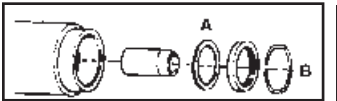
14-0014 V-Twin™ Deluxe Glide Fork Seal Kit fits 1949-76 and includes all the necessary seal and gaskets plus felt retainer, washer and circlips.

VT No.	Item
14-0014	Kit
24-0611	Rings
14-0135	Seals Only, 5 pk



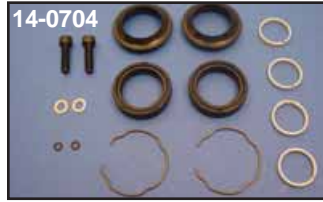
Fork Seal Kit replaces 45849-49. Complete seal kit for 1949-76 FL-FLH. Includes both upper and lower seal and gaskets.

VT No. 14-0015



A-Slider Seal Washers are zinc plated.

VT No.	OEM	Year/Model
24-0617	45854-48	1949-76 FL-FLH
24-0615	45844-77	1977-up FL, 1980-up FXWG,
24-0642	45928-73	1973-76 FX-XL
24-0091	45911-80	1980-83 XL, 1982-83 FX



GB Deluxe Fork Seal Rebuilding Kits include all pieces illustrated as appropriate for each application.

VT No.	Fits	Size
14-0702	1973-74 Kayoba	35 mm
14-0703	1975-84 Showa	35 mm
14-0706	1977-84 FLH	41 mm
14-0014	1949-76 FLH	41 mm



Leak Proof Fork Seals feature a Teflon coating to reduce drag and carry a manufacturer's life-time guarantee, sold in pair.

VT No.	Size	Fits
14-0250	35 mm	1973-76 Kayaba FX's
14-0251	35 mm	1975-87 FX, Showa
14-0252	41 mm	1977-up FL-FLT-FXWG



Fork Seal Sets are molded with factory part number, sold in pairs.

VT No.	OEM	Years	Type	MM
14-0010	45975-71	1971-72	FX	33.4
14-0013	45927-73	1973-76	FX, Kayaba	35
14-0011	45400-75	1976-82	FX-FXR Showa	35
14-0012	45843-77	1977-83	FLH-FXWG	41
		1980-84	FLT	
		1980-84	FXWG	

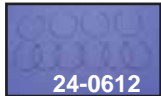


GB Upper Fork Seal Kit use to update 1949-77 FL/FLH to later style fork seal. Kit contains seals and spacer washer. New style seal replaces original type narrow seal, felt and top washer.

VT No. 14-0046

B-FXST Fork Seal Retaining Ring.

VT No.	OEM	Year	Model
24-0611	45856-48	1949-76	FL-FLH
24-0612	45842-77	1977-up	FL-FXWG
24-0641	45931-73	1973-76	FX-XL
24-0613	45401-75	1975-80	FXS-XLH



Fork Brace



Chrome Billet Fork Brace unique 3-piece

design allows for easy installation on 41 mm fork assemblies.

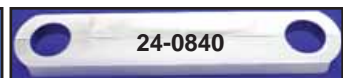
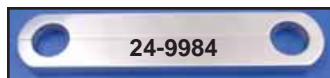
VT No. 24-0768



24-0841 Installed

Chrome Fork Brace is 4 piece design for easy installation on 41mm or 39 mm forks.

VT No.	Size	Fits
24-0842	41mm	1984-up FXST, 1993-05 FXDWG
24-0841	39mm	1985-05 FXR, FXD



Tweek Bar Fork Brace is a two piece design which clamps directly to fork tube. *As noted clamps directly to fork tube other clamp to fork leg.

VT No.	Size	Fits	Finish
24-9984*	41 mm	1949-84 FLH, 1980-up FXWG-FXST	Polish
24-0840*	41mm	As Above	Chrome
24-0768	41 mm	3 pc	Chrome



41 mm Fork Plug



Glide Fork Plug Kit includes fork tube plugs and matching top filler cap plugs, for FL-FLH 1949-84.

VT No. Fits

24-0140 1949-84

24-0625 1977-up Showa, FL-FXWG-FXST

24-0599 1977-up Showa (Tapered)



Inner Fork Tube Plugs for 1949-up Big Twin glide model forks.

VT No.	OEM	Year	Finish	U/M
24-0144	45776-49	1949-E77	Chrome	Pair
24-0326	45776-49	1949-E77	Zinc	Pair
8716-1	45838-77	1977-up	Chrome	Each
24-0187	45838-77	1977-up	Chrome	Pair
8226-1	45776-49	1949-E77	Chrome	Each
24-9957*	45777-50	1949-76	Zinc	Pair
24-0828	45777-77	1977-up	Zinc	Pair

*Note: Adjustable type plugs for adjustable trees vented with breather.



Fork Plug Sets includes vent valve assembly as pictured, pairs, zinc plated fit 1949-76 FL-FLH models.

VT No.	OEM
24-0750	45775-49
24-9957	45775-50
24-0264	Adjustable Breather Valve Set



Fork Baffle Kit fits FLH for 1949-77. Servi-car 1958-73, with all parts necessary to thread into slider tube plug as pictured for 2 sides.

VT No. 24-0130



Fork Tube Top Caps are stock style and vented when required. Sold each unless noted as pair.

VT No.	OEM	Finish	Fits
7620-1	A 45754-49	Chrome	1949-77 FLH
24-0184	A 45754-49	Chrome	1949-77 FLH, Pair
8872-1	B 45754-60	Zinc	1960-77 FLH
9911-1	B Flat Top	Chrome	1960-77 FL
24-0186	45419-80	Chrome	1977-up FL
	45418-80		

9912-2 B Flat Top Chrome 1978-up FL
8233-1 A 45419-80 Chrome 1977-84 FL

Note: VT No. 8872-1 and 9912-2 are flat top like stock



Taper-Top Socket Fork Caps. 41mm Glide.

VT No.	Years/Model
24-0154	1948-76 FLH
24-0155	1977-up FLH-FXWG



Chrome Fork Tube Plug with 5710 washer. Fits FL, FXWG, Softail 1978-up.

VT No. 2311-2



Chrome 1949 Style Fork Tube Plugs feature domed shaped as original, with vents. Fit 1949-76 Glide style forks. Sold in pairs.

VT No. 24-0465



Tube Cap Washer & Seal for Showa & Kayoba fork legs, 10 pk.

VT No.	OEM	# Fits	Finish
24-0616	45997-73	A 73-up FX-XL-FXR	Zinc
24-0610	5710	A 80-up FXWG fits Tube Plug	Zinc
9964-2	5710	A 80-up FXWG fits Tube Plug	Chrome
14-0132	45773-48	B 48-up FLH-FXWG, Cap Seal	

Fork Brace



35mm Polished Tweek Bar Fork Brace is a two piece design which clamps directly to fork tube. Fits 1973-86 FX.

VT No. 24-0824

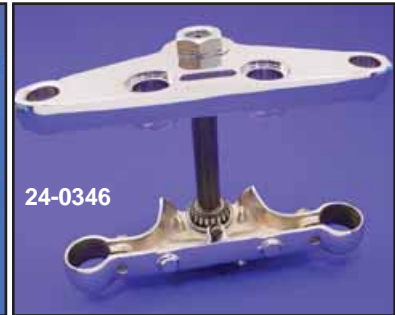
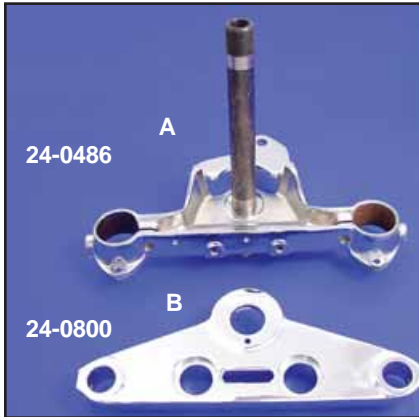


Chrome 35mm Forged Aluminum Fork Brace add rigidity to forks by clamping to fork seal area of lower leg. Fits FX-FXR with 35mm forks 1973-87.

VT No. 24-0323



41 mm Glide Tree



FLH Triple Trees fit Big Twin FL fork tubes 41mm 1948-84, 1960-84 types can be fitted with aluminum cowl sets only, 24-0251. 1949-59 can be fitted with tin cowl sets, 24-9913. All lowers accept lower slider covers. 1948-59 style top trees have 1/2" holes for post riser mounting.

VT No.	OEM	Finish	Year	Item
Tree Sets				
24-0800*	Fits Cowl	Chrome	1960-84	A and B
24-0486	Fits Cow l	Chrome	1960-84	C and B
24-0829	Fits tins	Black	1948-59	C and D
Lower Tree Only				
24-0811	45700-60	Chrome	1960-84	D
24-0444*	45700-69A	Chrome	1960-84	A
24-0813*	45700-69A	Black	1960-84	A
24-0830	45700-48A	Black	1948-59	D
24-0985	45700-48A	Chrome	1948-59	D
Top Tree Only				
24-0003	56121-73	Chrome	1973-84	B
24-0814	56121-73	Black	1973-84	B
24-0751	56121-48	Black	1948-59	C-Solid
24-0752	56121-48	Chrome	1948-59	C-Solid
28-1949	56159-49	4 Pc Set	1960-72	Riser bushing
28-0221	56153-73	Set	1973-84	Riser bushing
37-8835	4729	Zinc	1948-84	Lower Pinch Bolt
24-0674	—		1948-84	Stem Only

*Note: Lower tree has a locktab.

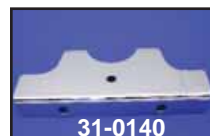


Dies are round type adjustable to restore damaged or mistreated threads. Fits 1936-84 Big Twin 1" x 24T FL-FLH Fork Stem
VT No. 16-0836

FXWG-FXST Triple Trees accepts 41mm fork tubes. Bottom tree features built in rake and rounded edges. Trees use VT No. 28-2218 rubber bushing set and headlamp bracket VT No. 31-9991 not included. For 1980-99 FXWG, FXST.

VT No.	Type	Years
TREE SETS		
24-0000	Stock	1980-99
TOP TREE ONLY		
24-0007	Stock	1980-99
24-0062	Stock	1980-99
LOWER TREE ONLY		
24-0825	Stock	1980-87
24-0843*	Stock	1980-87
24-0064	Without lock	1980-99

*Note: Includes lower bearing.



Chrome 1980-up FXWG-FXST Headlight Bracket mounts bottom mount headlights on fork, also covers rough casting on lower tree. VT No. 31-0140



24-0500 1948-84 FLH Headlamp Cowl Kit available with complete light assembly with rim, chrome or polished housing set with matching top handlebar cover as pictured.

- VT No. Item**
24-0500 Chrome Kit
24-0501 Polished Kit
37-0808 Screw Kit, Stainless Steel
37-0815 Screw Kit, Chrome



Slider Covers fit 1949-84 FLH model forks. Stock length is 6⁵/₈" overall.

VT No.	Finish	Fits
24-0190	Chrome	Stock
24-9962	Stainless	Stock
24-0839*	Raw	Stock
24-0191	Chrome	1" over
24-9983	Stainless	1" over
24-9987	Stainless	2" Over
24-0138	Chrome	2" Over
24-9961	Chrome	3" Over
24-0139	Chrome	4" Over

*Note: For painting.



Top Triple Tree Covers are available in either a stainless steel or chrome finish. Note: 24-9904 and 24-9900 for 1949-59 solid mount glide risers.

VT No.	OEM	Finish	Type/Style
24-9904	45740-49	Stainless	FLH, Solid
24-9900	45740-49	Chrome	FLH, Solid
24-9988	45741-50	Stainless	Adjustable, Solid
24-9905*	45741-60	Stainless	3 ¹ / ₂ " C/C
24-9908*	45741-60	Chrome	3 ¹ / ₂ " C/C

*Note: 3¹/₂" C/C, fit the 1960-up type Iso mount trees.

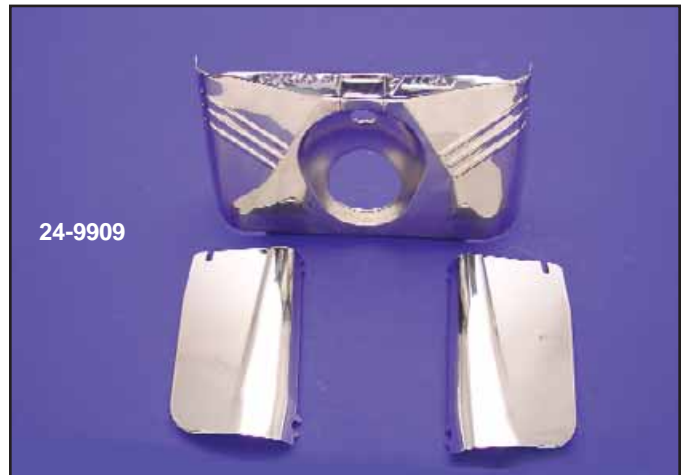
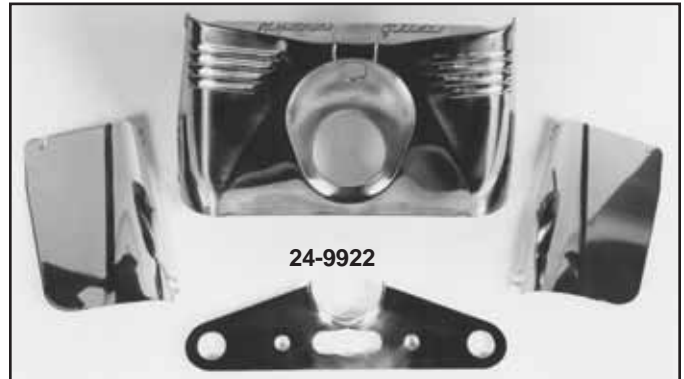


Handlebar Clamp Cover replaces original type FLH 1960-84 Wide Glide Forks.

VT No.	OEM	Year	Type
24-0250	56590-60	1960-79	Chrome Smooth
24-0281	56590-60	1960-79	Polished Smooth
24-1060	56589-60	1960-79	Polished with Damper Hole
24-9963*	56589-60	1960-79	Chrome with Damper Hole
24-0330	56590-79	1980-84	Chrome Smooth
37-8701	Chrome	1960-84	Screws for Above

*Note: Uses 24-0202 Damper Kit.

Fork Panel



Fork Covers fit 1949-59 FLH Triple Trees.

VT No.	Years	Item	Finish	Note
24-9913	1955-59	3 Pc Kit	Chrome	3 Rib, HG
24-9909	1955-59	3 Pc Kit	Stainless	3 Rib, HG
24-9912*	1949	4 Pc Kit	Stainless	4 Rib
24-9922*	1950-54	4 Pc Kit	Stainless	4 Rib, HG
24-9902	1949-59	Left SS	46281-49	
24-9903	1949-59	Right	SS 46273-49	
24-9923	1950-54	Front	Stainless	4 Rib HG
24-9924	1949	Front	Stainless	4 Rib
24-9906	1955-59	Front	SS 46273-49A	3 Rib HG
24-9907	1955-59	Front	Chrome	3 Rib HG
37-0547	1949-59	—	Mount Kit	

*Note: 1949-53 type feature straight ribs and include VT No. 24-9904 tree cover.



Control Cable Guide replaces 56600-49 on 1949-60 FLHs to prevent cables and wiring from abrasion on top triple tree, black plastic construction.

VT No. 28-0222