



## Instruction Sheet For #95660-42, #95660-77, #95660-85, #2346

### 4 and 5 speed transmission main seal tool

Use to install and remove main seal in all 4-speed transmissions. This tool will push the seal in as flat and straight as possible to .050" below housing for a no leak fit.



No. 95660-42 - Use on Big Twin 1936-Present

\*To install seal on Big Twins 1982-86, use tool #95660-77 with this main tool.

\*\*To install seal IN 5-Speed Big Twins 1980-84 use tool #2346 with this main tool

\*\*\*To install seal in 5 speed Big Twins 1985-Present, use tool #95660-85 with this main tool.

Note: Read all instructions before doing any work.

*For Removal of Seal 4-Speed 1936-76:*

1. Refer to H.D.® Service Manual for removal of primary inner cover (WARNING disconnect negative cable to battery to avoid accidental start ups) to gain access to main seal.
2. Place main body of tool #1 (see parts list) over end of mainshaft.
3. Thread installer screw #3 (with a small amount of lube on threads), installer has left hand threads on I.D. Thread it on at least 3 - 4 turns.
4. Next place the flat washer #6 and follow with nut #5 tighten snugly. Apply a small amount of lube on threads. (This is just to hold tool in place to be able to thread in 3 self tapping screws).
5. Apply a small amount of lube to the 3 screws #7. Install screws through the three holes in handle. Using a 1/4" socket push in on screws and turn clockwise until all three screws are flush with tool handle. (Sometimes a light hammer tapping will help start the screws.)
6. With screws locked in place remove items #3, #5 and #6.
7. Apply a small amount of lube to the I.D. and O.D. threads of items #2 and #4. Thread item #2 into end of item #1 followed by item #4, continue turning #4 inward until seal clears trans case. Remove old seal from tool, remove items #2 and #4 from item #1.
8. Check inner seal race for wear burrs or any other defect. Replace if need be. Remove all burrs and all foreign material from seal bore. (To remove seals 1977-present, See H.D.® Service Manual)
9. Wash all tapping debris and dirt from tool handle #1 before installing new seal.

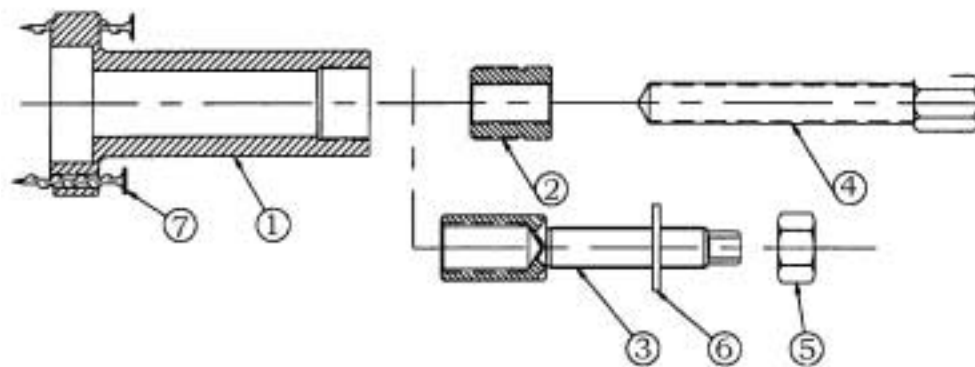
CAUTION: Wear Safety Glasses. Excessive force may damage parts or tools.  
See JIMS® catalog for over 100 top quality professional tools.  
The last tools you will ever need to buy.

*"From the Track... To the Street"*

555 DAWSON DRIVE, CAMARILLO, CA 93012 • PHONE 805-482-6913 • FAX 805-482-7422

*For Installation:*

1. Do removal #8 and #9 if not already done.
2. If you are using the cork sealing ring install now. Apply a small amount of lube to the seal I.D. and a little on the O.D. of inner seal race, slip inner seal race through seal I.D.
3. Place seal and inner race over the main shaft and gear end. Place seal handle #1 up against the front of seal. Now is a good time to install a good sealer like locktite gasket eliminator to O.D. of seal.
4. Thread in #3 to the end of the mainshaft all the way in (lube all threads). Place washer #6 over #3 followed by nut #5. Using a 15/16" wrench tighten nut until tool stops against trans case. Your seal is now below the case for a no leak seal.
5. To install 1977-86 4 speed seal, install tool #95660-77 after new seal and before tool #1, follow instructions listed on line 2, 3, 4.
6. To install 1985-present 5 speed seal, install tool #95660-85 after new seal and before tool #1, follow instructions listed on line 2, 3, 4.



\*To install seal on 1977-86, use tool #95660-77 with this main tool.

\*\*To install seal in all 5 speeds, use tool #95660-85 with this main tool.

**PARTS AVAILABLE SEPARATELY**

No.	Qty.	Description	Part No.
1	1	HANDLE	95660-42-1
2	1	REMOVER INSERT	95660-42-2
3	1	INSTALLER	2139
4	1	REMOVER SCREW	1024
5	1	NUT	2032
6	2	SAE WASHER	2020
7	4	#8 SELF TAP SCREW	95660-42-7
8	1	COLLAR INSTALLER BIG TWIN 1977-86	95660-77
9	1	COLLAR INSTALLER BIG TWIN 5-SPEEDS 1985-PRESENT	95660-85
10	1	INSTRUCTION SHEET	95660-IS