



Instruction Sheet For #95760-XL

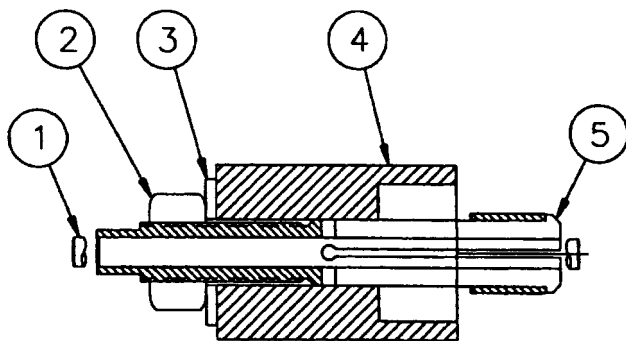


INNER CAM BEARING REMOVER USE ON SPORTSTER 1957-90

"Warning disconnect negative cable of battery to avoid accidental start ups"

1. Refer to H.D.® Service Manual for removal of cam cover and tappet blocks.
2. Rotate flywheels to give the most room behind cam bearing.
3. Disassemble tool by removing nut, brass washer, sleeve, and inner pin. This will leave just the remover portion of the tool #5 (the piece with the four grooves), we call it the puller.
4. Push the puller through cam bearing (grooved end first). You can tap end of puller with a soft hammer until the puller is completely through bearing.
5. Now install body #4 with puller bore towards bearing, next apply a little oil to washer #3 and nut #2
6. Snug up nut, apply a little oil to the pin #1 and slip pin through center until flush with puller.
7. With your 15/16" wrench turn nut clock wise until bearing is pulled free of case (you may need to hold puller with your 1/2" wrench to keep it from turning).

Use JIMS® tool #97273-60 to install your new bearing. It is highly recommended that you use a Torrington® bearing with JIMS® #2124 press fit lube.



PARTS AVAILABLE SEPARATELY

No.	Qty.	Description	Part No.
1	1	DOWEL PIN	95760-XL-1
2	1	NUT	2000
3	1	BRASS WASHER	2126
4	1	BODY	95760-XL-4
5	1	PULLER	95760-XL-5

CAUTION: Wear safety glasses. Excessive force may damage parts! See JIMS® catalog for over 100 other top quality professional tools. The last tools you will ever need to buy.

"From The Track... To The Street!"

555 Dawson Drive, Camarillo, CA 93012 • Phone 805-482-6913 • Fax 805-482-7422