

This is a custom application and rider safety depends on proper installation. This product should only be installed by a knowledgeable and trained motorcycle technician. V-Twin Mfg. accepts no responsibility for improper installation.

Instructions for most 2006-10 Bikes with stock style compensator shown to the right.

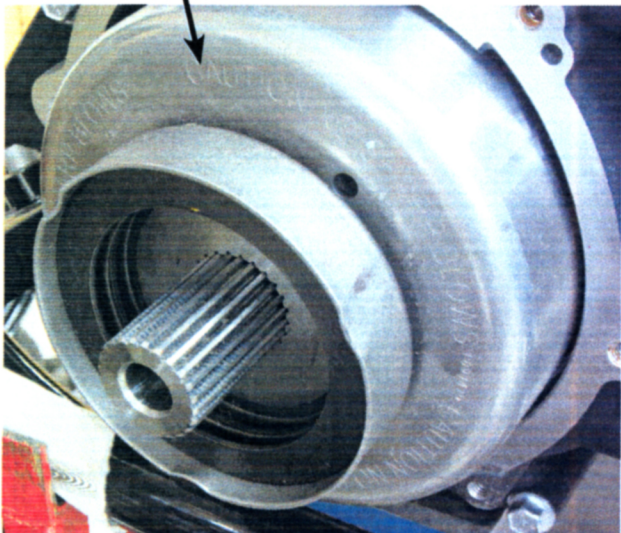
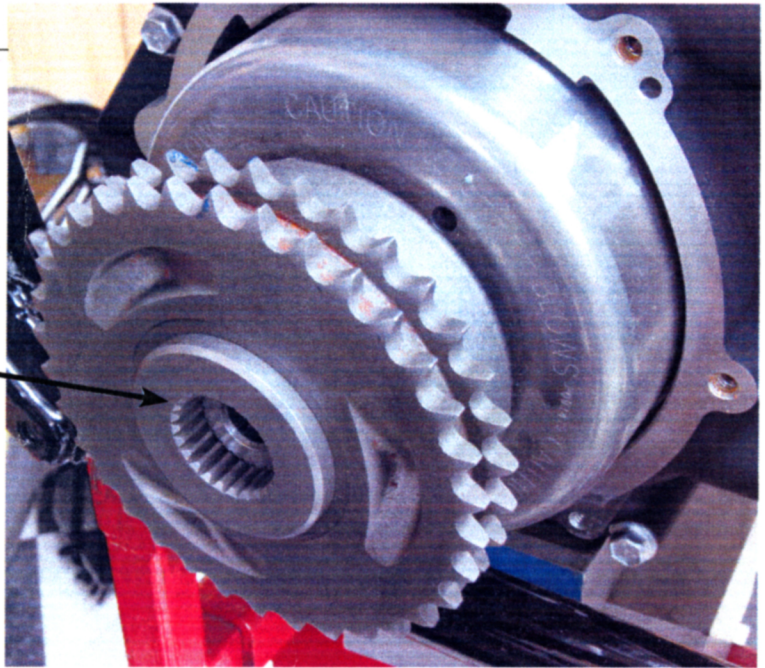
*Remove Primary Cover

*Remove Compensator Bolt

*Remove Clutch Hub, Chain and Compensator together.

This step is optional, but leaving the spring pack in may cause noise and/or an imbalance.

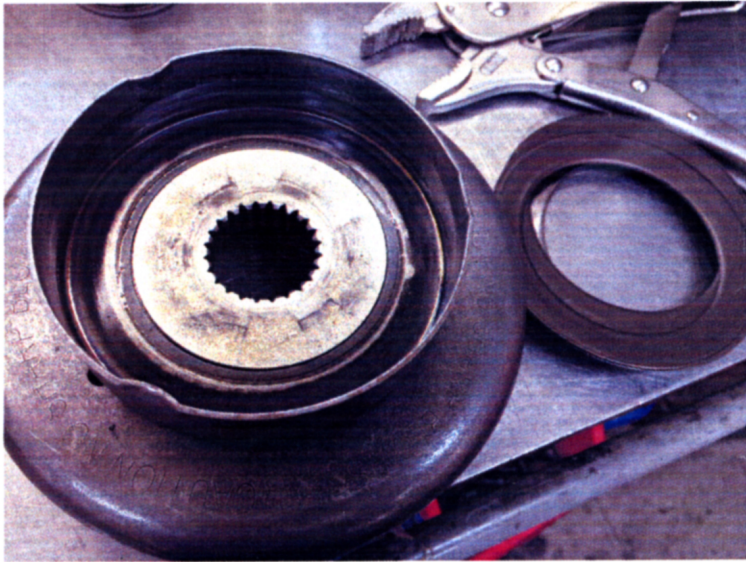
*Slide Alternator Rotor off shaft



Bend one of the tabs back and slide out all of the belleville springs



Springs Removed



- Mount Alternator Rotor back on shaft

- Important: Refer to the Service Manual for your bike for a complete installation procedure.
- The Motor sprocket, Chain and Clutch hub must be installed at the same time.
- Install Bolt with red Loctite and included washer (Recessed Side toward Motor).
- Torque To 65 FT-Lbs

