

FORWARD CONTROL FOR FL SOFTAIL VT No. 22-0679 and 22-0681

Additional Parts Required

Proper installation of this kit requires Loctite® 243 (Blue).

WARNING

Rider and passenger safety depend upon the correct installation of this kit. Use the appropriate service manual procedures. If the procedure is not within your capabilities or you do not have the correct tools, have a dealer perform the installation. Improper installation of this kit could result in death or serious injury.

NOTE

If engine guard fitment is desired, this kit is only compatible with FX Softail Engine Guards.

NOTE

This instruction sheet references Service Manual information. A Service Manual for your model motorcycle is required for this installation and is available from a dealer.

New banjo bolt gaskets and cotter pin are NOT supplied with this kit.

Kit Contents

See Figure 5 and Table 1.

INSTALLATION

Shifter Side, Left

WARNING

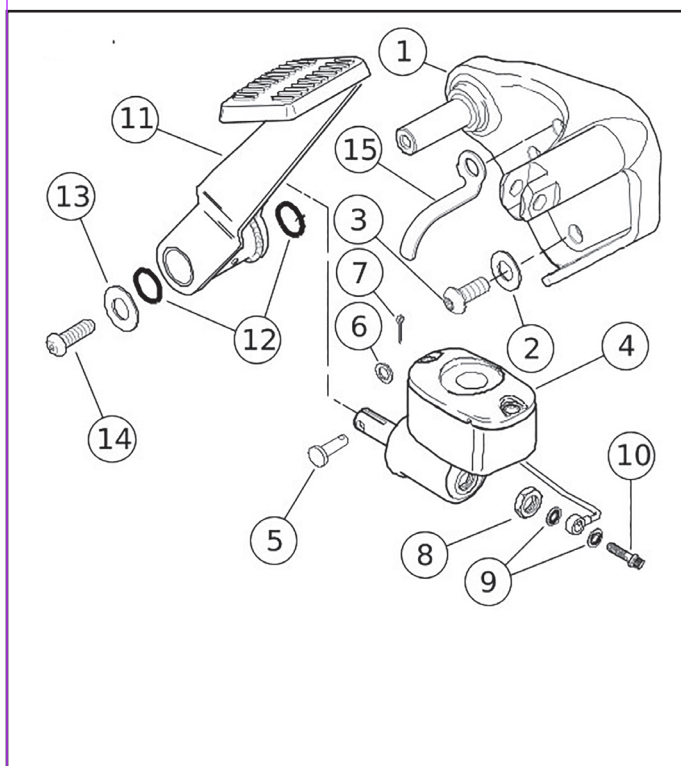
Block or jack vehicle under frame in a way that the vehicle will not fall over. Failure to properly block and/or raise the vehicle could result in death or serious injury.

1. Block the motorcycle under the frame so that it is upright and level, with the weight off of the jiffy stand.
2. Remove footpeg.
3. Remove jiffy stand, shifter linkage and bracket per applicable Service Manual instructions, retaining hardware.
4. See Figure 5. Obtain the new left side shifter bracket (2), and three TORX® screws (3) from the kit.
5. Place washers previously removed on the screws. Apply LOCTITE® 243 (Blue) to the threads, and install the new bracket assembly to the motorcycle frame. Tighten the screws to 54.2 N·m (40 ft-lbs).
6. See Figure 5. Install footpeg with spring washer (8), clevis pin (10) and retaining ring (9).

WARNING

If leg stop is incorrectly installed, excessive wear can allow vehicle to fall when rested on jiffy stand, which could result in death or serious injury.

7. Install jiffy stand and attach the spring. When properly installed, the hook on the spring side connected to the bracket will face upward.
8. Verify that rubber bumper is in place on prong of jiffy stand. Without the bumper, the stand will make hard contact with the primary drive cover when retracted, which may result in damage to the cover.
9. Extend and retract the jiffy stand leg several times to verify proper operation. The stand should swing freely to the fully extended and fully retracted positions.
10. Refer to applicable Service Manual and re-attach the shifter linkage.



- | | |
|----|--------------------------|
| 1 | Bracket* |
| 2 | Washer |
| 3 | Screw (3)* |
| 4 | Master cylinder |
| 5 | Clevis pin |
| 6 | Washer |
| 7 | Cotter pin |
| 8 | Nut |
| 9 | Steel/rubber gaskets (2) |
| 10 | Banjo bolt |
| 11 | Brake lever |
| 12 | O-rings |
| 13 | Washer |
| 14 | Screw |
| 15 | Clip* (2011 and later) |

Figure 1. Right Side Footboard Mounting Bracket and Brake Lever Components

Note:

In above illustration items with Asterisk* are in kit. Other items shown for reference only.

Set aside original hardware that is removed. All of it except screws for the mounting brackets will be reused.

1. See Figure 1. Remove FL brake lever (11) and footpeg (not shown).
2. Remove master cylinder (4) per applicable Service Manual instructions.
3. Remove FL bracket from frame.
4. Obtain the new right side chrome bracket (1), and three chrome screws (3) from the kit.

