

Instructions

Chrome Rear Caliper Bracket For Softail® Models late 1987 to Present

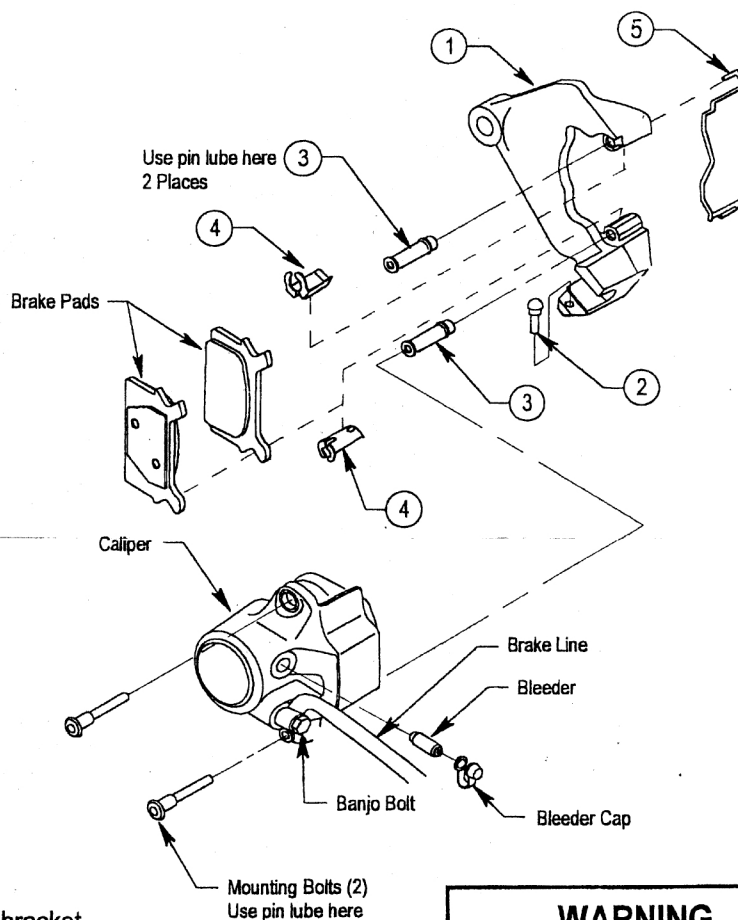
BILL OF MATERIALS

| NO. | QTY. | DESCRIPTION |
|-----|------|----------------------|
| 1 | 1 | REAR CALIPER BRACKET |
| 2 | 1 | RUBBER BUMPER |
| 3 | 2 | RUBBER BUSHING |
| 4 | 2 | INSERTS |
| 5 | 1 | RETAINER |
| 6 | 1 | LUBRICANT |

NOTE: Use blue Loctite on the first three threads of all hardware.

1. Remove caliper mounting bolts.
2. Press Caliper towards the rotor to push the piston back into the bore (a minimum of 1/8") so that the piston will clear the head of the pad insulator retainer.
3. Lift caliper off rotor. If caliper hangs up on the head of the pad insulator retainer and prevents removal, push piston further into bore to provide adequate clearance.
4. Remove retainer, brake pads, brake pad inserts and mounting bushings.
5. Slide rear axle out enough to remove the OEM caliper bracket and replace with Chrome Rear Caliper Bracket ①.
6. Slide rear axle back in and install axle nut. Tighten to 65 ft. lbs. of torque.
7. Insert both rubber mounting bushings ③ into caliper mounting holes in bracket. Collapse bushing to start. Use blunt tool to push through bracket.
8. Coat inside of bushings and shaft of mounting bolts with pin lube before inserting bolts.
9. Place assembled caliper over brake pads and onto bracket.
10. Insert mounting bolts through caliper into the bracket. Tighten to 15-20 ft. lbs. of torque.
11. Install brake hose using new washers on the banjo fitting. Tighten banjo bolt to 17 to 22 ft. lbs. Bleed brake. Tighten bleeder screw to 32-40 in. lbs.
12. Check for leaks and correct torque installation.

NOTE: Bike should be carefully test ridden at slow speed to make sure brakes operate properly, before open road use.



WARNING

Recheck all nuts, bolts and fittings for proper location, fit and torque. Check brake system and be sure the brakes work correctly before riding.