

General

Kit 24-0227 is designed to fit 1994 1/2 and later FLHR (Road King) motorcycles
 Kit 24-0229 is designed to fit 1986-up FLHTC (Electra Glide Classic) and later FLHTC U (Ultra Classic Electra Glide) motorcycles
 Kit 24-0228 is designed to fit 1980 -up FLTC-U (Ultra Classic Tour Guide) and 1987-93 FLHS motorcycles.

INSTALLATION

NOTES

You will have to remove the cable tie on the right side of the lower fork clamp.
 You will have to loosen the chrome lower fairing skirt.
 Fork leg covers are identified by a "left" or "right" decal on top of the screw tab that projects to the side, at the top of the cover.
 The covers are manufactured in two matched halves that are "hinged" on one side.

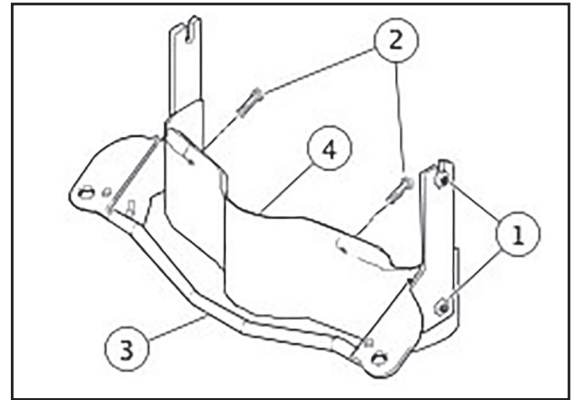
1. Cut the cable ties securing wiring harnesses to the lower fork clamp and move harnesses out of the way.
2. See Figure 1. Loosen, but do not remove, the two screws (1) securing the chrome lower fairing skirt to the fork legs (the bottom screws for the passing lamp assembly); and loosen, but do not remove, the two screws (2) securing the chrome lower fairing skirt to the inside of the fairing.
3. See Figure 2. Open and fit the chrome fork leg covers (1) around the OEM fork leg covers. You will need to pull firmly on the chrome lower fairing skirt to allow slight clearance for the fork leg cover to slide up and underneath the chrome lower fairing skirt.
4. Slide the covers up and maneuver them into place, around brake lines and wire harnesses until the screw tabs rest against the bottom of the lower fork clamp.

NOTE

- You may have to use a soft-faced mallet to tap the locking trim pieces into place.
5. Align the two halves and slide the locking trim piece (2) into place. Position the trim piece so the bottom of the trim piece is even with the bottom of the cover.
 6. Align the trim piece holes with the holes in the two halves of the covers and install the retaining screws and nylon washers.
 7. Align the holes in the screw tabs with the holes in the the lower fork clamp and install the 1/4-20 x 11/16 inch screws from the bottom, threads pointing up. Place the washers and locknuts on the screws.

NOTE

- On all models, it is normal that part of the fork cover will be under the bottom of the headlamp nacelle or fairing.
 On FLHR, FLHT/C/U AND FLHS models, the locking trim piece will usually nearly contact the bottom of the headlamp nacelle or fairing.
8. Install cable ties from kit.
 9. Tighten chrome lower fairing skirt hardware using Allen wrench (3) from kit.



- 1 Screw (2)
- 2 Screw (2)
- 3 Passing lamp bracket
- 4 Chrome lower fairing skirt

Figure 1. Loosen Chrome Lower Fairing Skirt

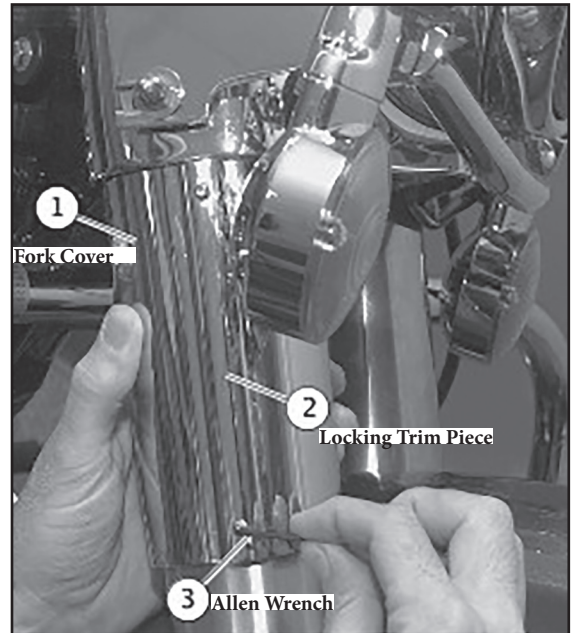
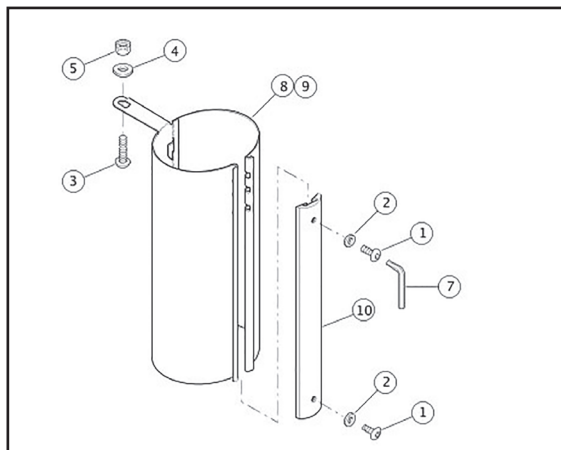


Figure 2. Fork Leg Cover



Hardware kit includes items 1 through 7 below

- 1 Screw, retaining, 6-32 x 1/4 inch (2)
- 2 Washer, nylon (2)
- 3 Screw, 10-32 x 3/4 inch (2)
- 4 Washer, 10-32 (2)
- 5 Locknut, 10-32, (2)
- 6 Cable tie (2) (not shown)
- 7 Allen wrench
- 8 Upper fork cover, left
Small half
Large half
- 9 Upper fork cover, right
Small half
Large half
- 10 Trim piece, locking (2)
FLHTC
FLHR
FLT, FLHS