

**VT No. 27-0382 (50459-06 (Black)) and 27-0383 (50460-06 (Chrome))**  
These kits fit 2000 and later FXST, FXSTB, FXSTC, FXSTS, and FLSTC models.

**Additional Parts Required**

Installation of these kits on 2000 and later FLSTC models equipped with factory-installed leather saddlebags require the Bracket Relocation Kit (90238-00) be installed first. The Bracket Relocation Kit must be purchased separately. These kits also require the separate purchase of the Passenger Footboard Kit.

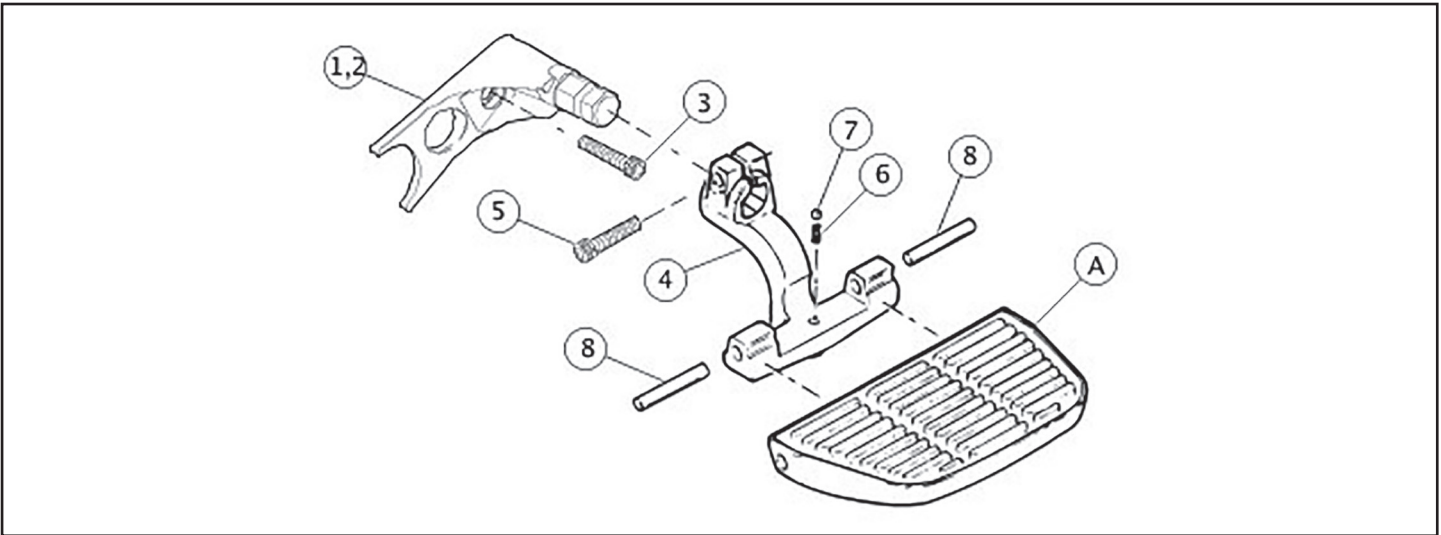
**INSTALLATION**

**Remove Existing Equipment**

- 1. Remove existing footpeg and attaching hardware.
- 2. Remove chrome swingarm pivot covers, if so equipped.
- 3. Do not remove tool box, if so equipped.

**Install Passenger Footboard Support Kit**

- 1. See Figure 1. Install footboard mounts (1) and (2) as follows:
  - a. Position footboard mount and insert screw (3) through part and into footpeg mounting hole.
  - b. Position semi-circular cutout in mount extending from side of mount around nut of swingarm pivot bolt.
  - c. Tighten screw (3) to 45-50 ft-lbs (61-67.8 Nm).
- 2. Position footboard support (4) on mounting stud so that bolt hole aligns with machined groove in stud.
- 3. Insert screw (5) through left side in split hub of footboard support. Thread into tapped hole (right side) of split hub.
- 4. Tighten screw (5) to 10 ft-lbs (13.6 Nm).
- 5. Place spring (6) into retaining hole in footboard support. Rest ball (7) on top of spring.
- 6. Refer to appropriate I-Sheet for instructions to install the footrest (A) and pivot pins (8) for your motorcycle.



**SERVICE PARTS**

Figure 1. Service Parts: Softail Passenger Footboard Support Kits

Table 1. Service Parts: Softail Passenger Footboard Support Kits

Kit	Item	Description (Quantity)	Part Number
Kit 50459-06 (Black)	1	Mount, footboard, left hand	50483-00
	2	Mount, footboard, right hand	50481-00
	3	Screw, socket head cap (2)	4310
	4	Support, footboard (2)	52713-95A
	5	Screw, socket head cap (2)	3601
	6	Spring (2)	33085-74
	7	Steel ball, chrome (2)	8860
	8	Pivot pin kit	50933-86A (includes four 50838-04)
Kit 50460-06 (Chrome)	1	Mount, footboard, left hand	50483-00
	2	Mount, footboard, right hand	50481-00
	3	Screw, mount (2)	4310
	4	Support, footboard (2)	52716-04
	5	Screw, support (2)	94572-98
	6	Spring (2)	33085-74
	7	Ball, Delrin® (2)	8861
	8	Pivot pin kit	50933-86A (includes four 50838-04)

Items mentioned in text, but not included in kit:

A Footrest (2) (generic footrest shown)