

V-TWIN INFO

Guide *May 6, 2020*

XL Solo Seat modification guide.



V-Twin No. 31-1760 can be modified to fit either 1986-2003 XL or 2004-UP.



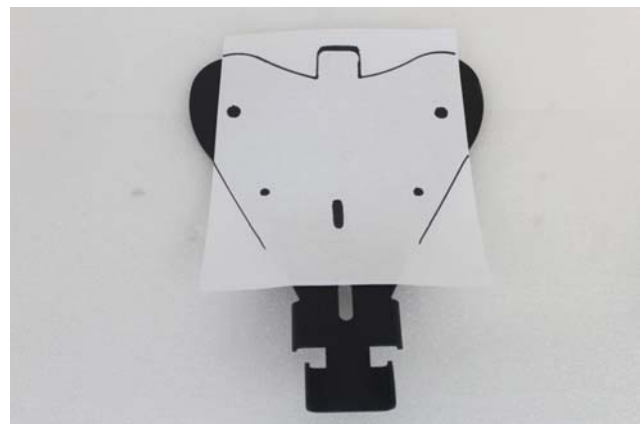
31-1760 Solo Seat Mount Pan

The 1986-03 XL uses the lower bracket to connect to the seat. For these years removing the front tab may be the only modification necessary if the seat does not require new holes to be drilled for fitment.

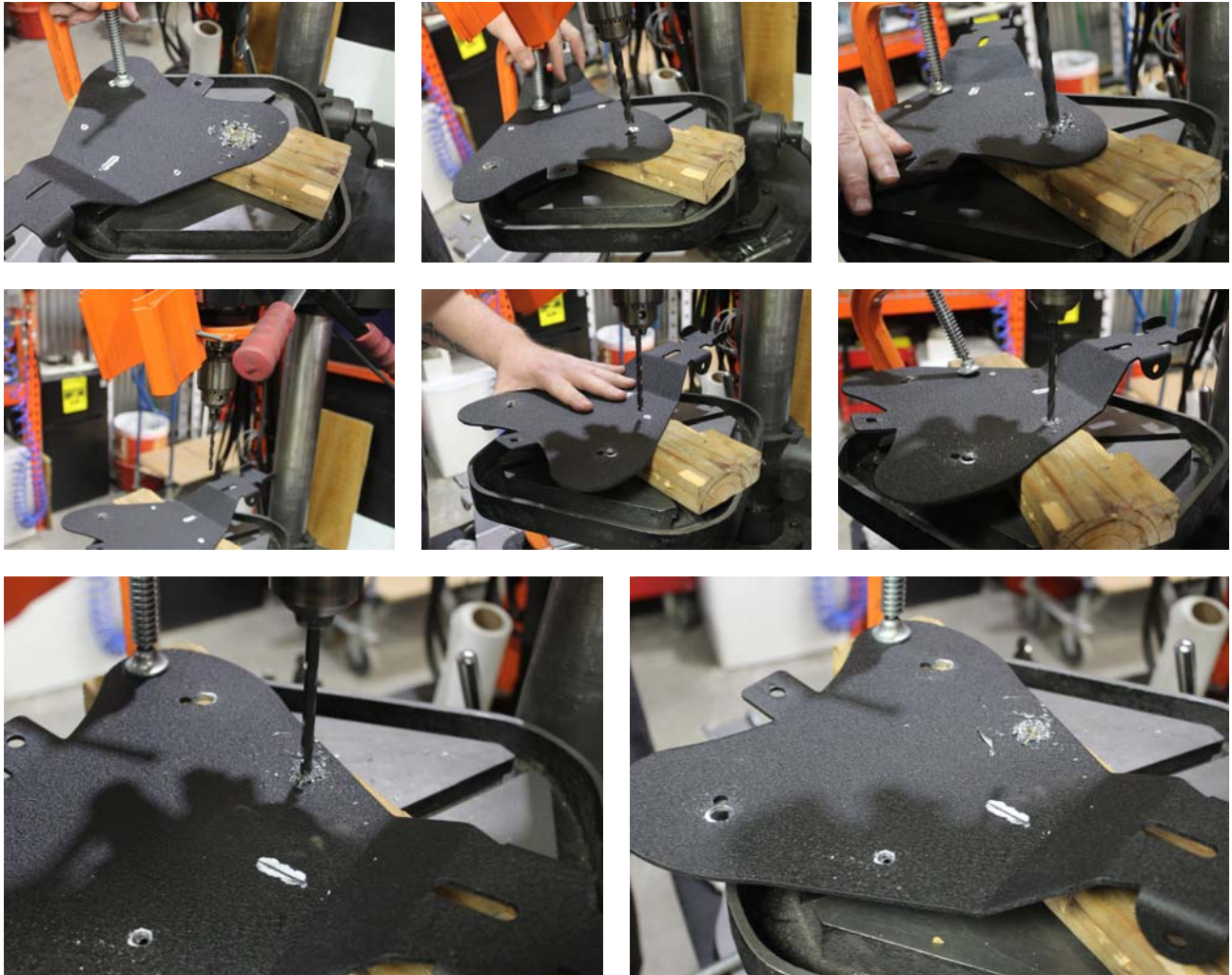


Remove front tab for 1986-2003 XL

Additional holes may need to be drilled for seat fitments. In this guide we will be using solo seat VT no 47-0486 as an example. You'll want to create a template based on your seats mounting screws. We have added two smaller holes as well for the swingarm bumpers.



After creating a template mark your mounting plate accordingly. We drilled 1/2" holes for the seat mount bolts and 1/4" holes for the frame swingarm bumpers (28-0550).



Center seat bolt hole needs to be drilled for clearance purposes only. You will not need to use a nut or washer.

After your holes have been drilled we'll now attach the 28-0550 frame bumpers. It requires an 1/8" thick spacer washer to allow the plate to sit flush against the plate. Spacer should be used between the bumper and the plate.



Now it's time to attach your seat plate directly to your seat. Flip your seat upside down and line the holes up with the bolts in your seat. Finally place washers and nuts on bolts and tighten.



Now your seat and plate are ready to attach to your bike.



admin

SHARE ON FACEBOOK

SHARE ON TWITTER

SHARE ON GOOGLE+

Archives

May 2020

January 2020