

V-Twin Mfg.
Chrome Saddlebag Support Set
VT Part No. 31-9924

This is a custom application and rider safety depends on proper installation. This product should only be installed by a knowledgeable and trained motorcycle technician. V-Twin Mfg. accepts no responsibility for improper installation.

Installation Instructions 1994-1999 Models

1. Some models may require the additional purchase of a Directional Relocation Kit. This kit must be installed before installing this Chrome Saddlebag Support Kit.
2. Remove and discard the upper shock absorber nut (1), outer washer (2) and shock absorber cover (3). Do not remove the OE inner washer (4) positioned behind the shock absorber cover and against the shock absorber.
3. Remove the front most OE button head bolt and nut (at 3) from the fender support cover. Discard the bolt, but retain the nut for later installation.
4. Install a new shock absorber cover (4) from the kit over the shock absorber stud.
5. Position the support bracket (5) with the front mounting hole over the shock absorber stud and the rear mounting hole over the hole in the fender support.

Note: Be certain when performing the following step that the wire retention bracket is not inadvertently dislodged from its position in the fender while inserting the bolt through the fender support and fender. The bracket may be difficult to reinstall or may be damaged if dislodged.

Note: When performing the following step:

- Models with sissy bar side plates, use the 2-3/8 in. long bolt (1) from the kit, and the nut (C) removed in Step 3.
 - Models without sissy bar side plates, use the 2-1/4 in. long bolt (2) from the kit, and the nut (C) removed in Step 3.
6. Install the saddlebag support to the vehicle by inserting the correct bolt (1 or 2) through the rear support mounting hole, the rear fender support cover, fender support frame rail, rear fender and wire retention bracket. Fasten with the nut (C) removed in Step 3. Tighten to 96-156 in-lbs.
 7. Secure the front of the saddlebag support bracket, and the upper shock absorber mount with the cover (4) in position, using the collar acorn nut (3) from the kit. Tighten the nut to 21-35 ft-lbs.
 8. Repeat Steps 2 through 6 for the opposite side of the vehicle.

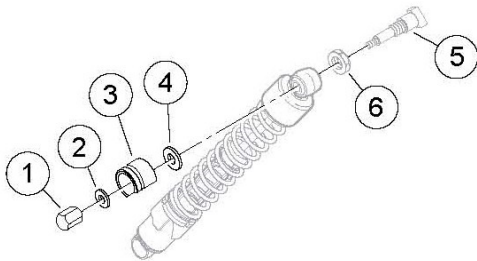
Installation 2000 and Later Models

1. For models requiring additional purchase of a Directional Relocation Kit, complete the installation of that kit before installing this Chrome Saddlebag Support Kit.
2. Remove the 1/2-13 bolt (1), washer (2) and shock absorber cover (3). Discard the bolt and cover, but retain the washer for later installation.
3. Remove the front most OE button head bolt and nut (3) from the fender support cover.
 On 2000 through 2003 models, discard the bolt, but retain the nut for later installation.
 On 2004 and later models EXCEPT XL 1200N, discard the bolt and nut.
 On XL 1200N models, discard the bolt, but retain the nut for later installation.
4. Position the support bracket (5) with the front mounting hole over the shock absorber stud and the rear mounting hole over the hole in the fender support.

Note: Be certain when performing the following step that the wire retention bracket is not inadvertently dislodged from its position in the fender while inserting the bolt through the fender support and fender. The bracket may be difficult to reinstall or may be damaged if dislodged.

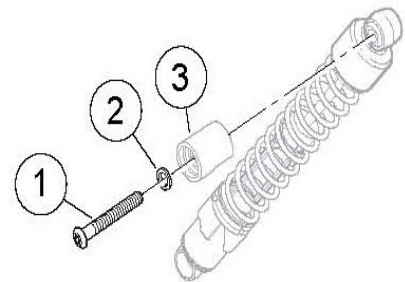
Note: When performing the following step:

- 2000 through 2003 models with sissy bar side plates, use the 2-3/8 in. long bolt (1) from the kit, and the nut (C) removed in Step 3.
 - 2000 through 2003 models without sissy bar side plates, use the 2-1/4 in. long bolt (2) from the kit, and the nut (C) removed in Step 3.
 - 2004 and later models except XL 1200N, use the 2-3/4 in. long screw (8), spacer (10) and locking acorn nut (9) from the kit.
 - XL 1200N models, use the 2-3/4 in. long screw (8) from the kit, and the nut © removed in Step 3.
5. On 2000 through 2003 models, install the saddlebag support to the vehicle by inserting the correct bolt (1 or 2) through the rear support mounting hole, the rear fender support cover, fender support frame rail, rear fender and wire retention bracket. Fasten with the nut removed in Step 3. Tighten to 96-156 in-lbs.
 6. On 2004 and later models EXCEPT XL 1200N, install the saddlebag support to the vehicle by inserting the bolt (8) through the wire retention bracket, rear fender, fender support frame rail, rear fender support cover and rear saddlebag support mounting hole. Place the spacer washer (10) onto the screw threads. Install the locking acorn nut (9) and tighten to 96-156 in-lbs.
 7. On XL 1200N models, install the saddlebag support to the vehicle by inserting the bolt (8) through the rear support mounting hole, the rear fender support cover, fender support frame rail, rear fender and wire retention bracket. Fasten with the nut removed in Step 3. Tighten to 96-156 in-lbs.
 8. Secure the front of the saddlebag support bracket, and the upper shock absorber mount, using the 1/2-13 hex head screw (7) from the kit. Tighten the screw to 21-35 ft lbs.
 9. Repeat Steps 2 through 6 for the opposite side of the vehicle.



1. Nut, upper shock mount
2. Washer, upper shock mount (outer)
3. Cover, shock absorber
4. Washer, upper shock mount (inner)
5. Bolt, upper shock mount
6. Hex nut

Rear shock absorber upper mount for 1994 – 1999 models



1. Screw, upper shock mount
2. Washer, upper shock mount
3. Cover, shock absorber stud

Rear shock absorber upper mount for 2000 and later models