

7 INCH HEADLAMP TRIM RING

These kits fit 1983 and later Touring motorcycles (except Tour Glide and Road Glide). Kits also fit 1994 and later FLHR models, and 1986 and later FLST models with accessory Chrome Headlight Nacelle (Part Number 67907-96).

2. Slip new trim ring over original equipment trim ring. The lip on the back of the accessory ring should slip between headlamp housing and original equipment trim ring.

NOTE

See Figure 1. Screw and nut may need to be removed to allow trim ring to slip over original equipment trim ring. Position mounting screw of accessory trim ring at bottom of headlamp.

Kit Contents

Item	Description
1	Screw
2	Nut
3	Trim ring

INSTALLATION

1. Loosen original equipment trim ring screw.

NOTE

If the original equipment trim ring screw is not loosened, the accessory trim ring will not fit properly

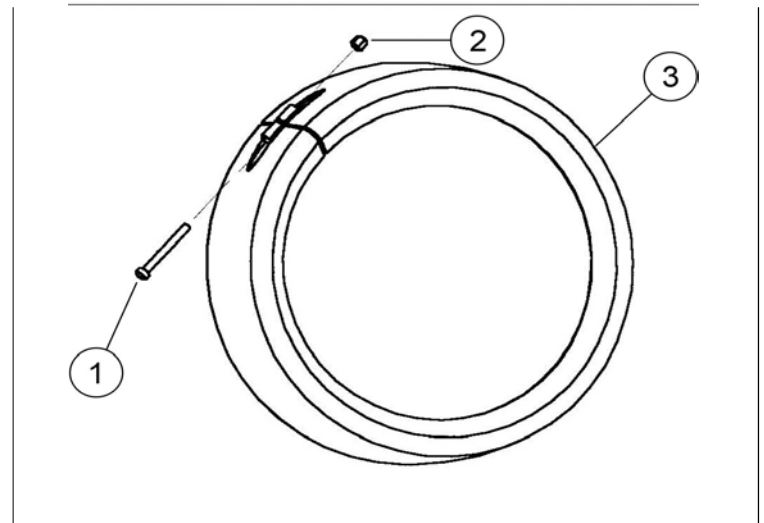


Figure 1. Headlamp Trim Ring

3. Tighten original equipment ring screw.
4. Tighten accessory trim ring screw.