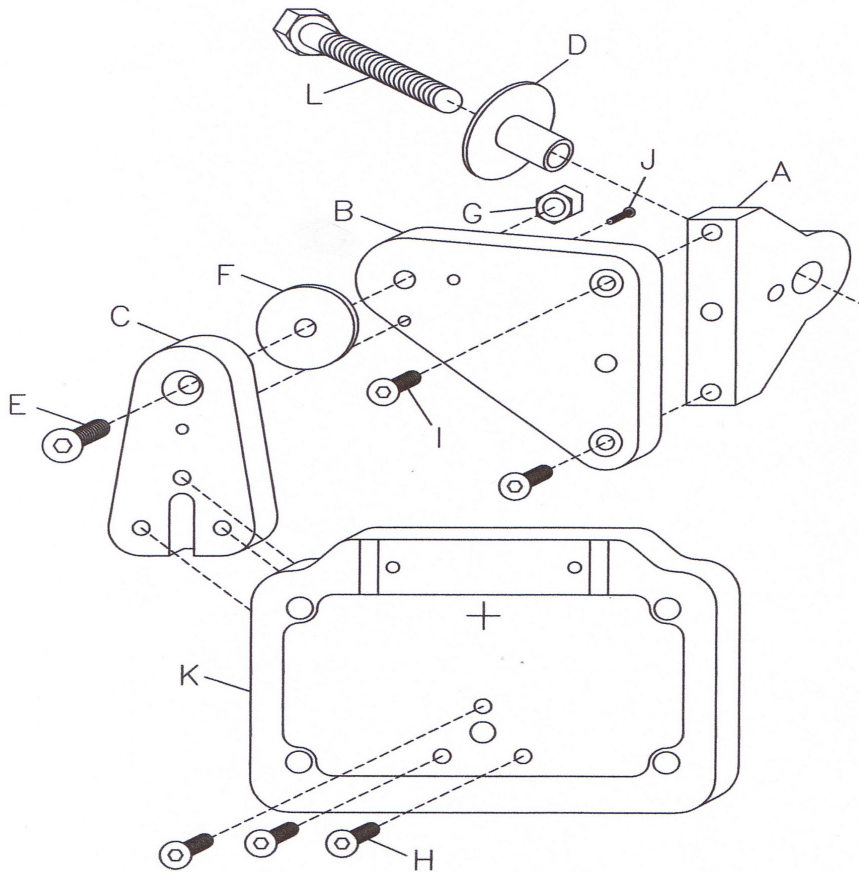


V-Twin Mfg.
Side Mount Tail Lamp Plate Set
VT Part No. 33-1929

This is a custom application and rider safety depends on proper installation. This product should only be installed by a knowledgeable and trained motorcycle technician. V-Twin Mfg. accepts no responsibility for improper installation.

Installation Instructions:

1. Install fixed mount (B) onto side mount bracket (A) using 1/4 - 20 UNC x 5/8 flat head screws (I).
2. Install movable mount (C) onto fixed mount (B) using 5/16 - 18 UNC x 1 1/4 flat head screw (E), nylon flat washer (F) and 5/16 - 18 UNC acorn nut (G).
3. Install tail lamp VT 33-0386 or other desired tail lamp using 1/4 - 20 UNC x 1/2 flat head screws (H).
4. Route wires through holes and slot provided.
5. Mount the assembly to motorcycle left rear axle area using mounting screw (L), size as needed. A 1/2 diameter mounting screw fits directly through side mount bracket (A). If using a 3/8 diameter mounting screw, use bushing (D) to reduce the hole size.
6. Rotate the tail lamp to horizontal or vertical positions as desired and install the #8-32 button head screw (J).



ITEM	DESCRIPTION	QUANTITY
A	Side mount bracket	1
B	Fixed mount	1
C	Movable mount	1
D	Bushing	1
E	5/16-18x1-1/4 Flat head screw	1
F	Nylon flat washer	1
G	5/16-18 Acron nut	1
H	1/4-20x1/2 Flat head screw	3
I	1/4-20x5/8 Flat head screw	2
J	#8-32 Button head screw	1
K	Tail lamp VT 33-0386	Not included
L	Mounting screw	Not included