

**V-Twin Mfg.**  
**DUAL CABLE SUPER BOWL**  
**FITS 1982-UP S&S SUPER "B" ONLY**  
**VT No. 35-4571**

**This is a custom application and rider safety depends on proper installation. This product should only be installed by a knowledgeable and trained motorcycle technician. V-Twin Mfg. accepts no responsibility for improper installation.**

**SUPERBOWL Installation Instructions:**

This kit fits S&S Super Carburetors only.

Each "Superbowl" Kit consists of:

- 1 - Aluminum Float Bowl with injector nozzle and accelerator pump installed.
- 1 - Template for locating hole to be drilled on carburetor.
- 1 - Throttle shaft bracket - with allen set screw.
- 1 - Instruction sheet.

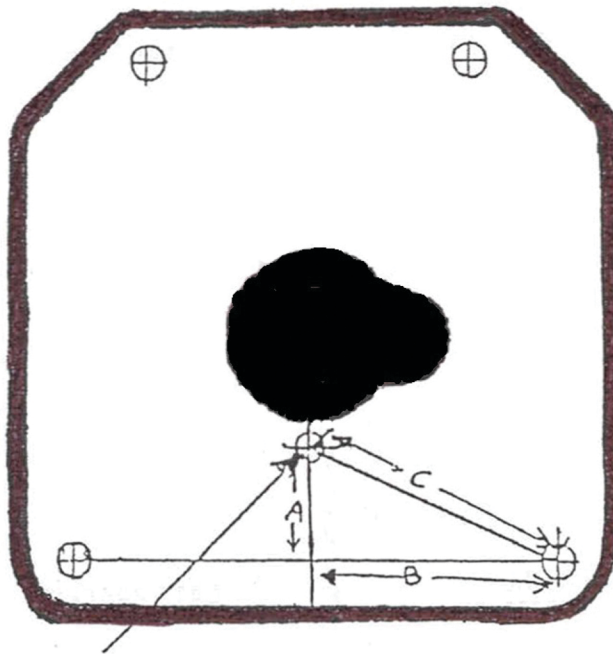
**Instructions:**

1. Unpack Superbowl, Check bowl to make sure it is clean and contains no foreign particles, packing materials, etc.
2. Remove carburetor from motorcycle (disconnect throttle cable at carburetor).
3. Remove drain plug from old float bowl, drain gas. Install drain plug on Superbowl. Pour small amount of gas in Superbowl. Pointing away from yourself and any persons or flammable object, test action of pump and inject nozzle by depressing pump with thumb. A steady healthy stream of gas should squirt out.
4. Remove old float bowl from carburetor. Remove float, bowl pin, and needle seat assembly from old float bowl and install in Superbowl.
5. Remove throttle arm assembly from carburetor. Remove idle adjustment screw spring, and throttle cable clamp, and install on Superbowl throttle shaft bracket.
6. Using shaded in area and old bowl gasket as guides, cut out center or template to allow template to sit flush on floor of carburetor (where old bowl bracket normally is).
7. Put carburetor upside-down in a bench vise or drill-press vise which has wood/brass jaw, being careful to not clamp too hard damaging or distorting carburetor.
8. Put template On carburetor and snugly secure with (4) four bowl screws. Using a long very sharp center punch, lightly tap the end with a small hammer in the center of the injector nozzle location mark.

**NOTE:** This is only a guide. **DO NOT DRILL HOLE YET.**

9. Remove template, then measure distance from either bowl screw on same side of main Jet tower to mark made with center punch, This distance should be 1.446 inches. See Figure A. Center punch mark clearly on floor of carburetor to prevent drill from walking.
10. After exact location of injector nozzle hole has been located and marked on floor of carburetor drill a hole through carburetor floor using a new sharp 1/4" drill bit, preferably in a drill press. Be sure to use a drill bit long enough so that the chuck on the drill doesn't hit the main jet tower on the carburetor. Drill hole carefully ensuring that hole is straight (perpendicular to the floor of the carburetor). Use very little downward pressure when drilling as not to break through floor and continue hitting other parts of the carburetor. Clean chips/burrs from carburetor we suggest complete cleaning of carburetor.
11. Using template as a guide, drill or hole punch a 1/4" (.250) hole in a new float bowl gasket (or in old one if still good) to allow injector nozzle to go through when installed. Put gasket on carburetor.
12. Test fit Superbowl on carburetor, making sure there is no bind on injector nozzle tube. The Superbowl should fit flush to carburetor and not require any extra effort when securing with four (4) bowl screws. After checking fit install Superbowl to carburetor tightening (4) bowl screws evenly.
13. Remove carburetor from vise and install throttle shaft bracket on carburetor throttle shaft. Connect accelerator pump to bracket by removing roll pin and reinstalling. Position bracket so that pump is fully extended and throttle butterfly is completely closed. Tighten allen set screw bracket. With a screwdriver on the other side of throttle shaft, snap open/shut the throttle to ensure complete closing of throttle butterfly and smooth operation and return of pump.
14. Now loosen allen set screw and remove bracket from carburetor throttle shaft, keeping bracket connected to the accelerator pump. With a small triangle file, notch a mark perpendicular to the throttle shaft right on top of the mark left when originally tightening the allen set screw. This will ensure a positive clamp for the bracket, preventing slippage during use.
15. Reinstalling bracket on throttle shaft, align allen set screw up with notch just previously filed. Tighten, then repeat check procedure listed on #13.
16. Connect throttle cable to carburetor and install on motorcycle. Adjust throttle stop screw to reset idle.
17. We strongly recommend the installation of a quality in-line fuel filter to prevent sediment from clogging the injector nozzle tube and/or passages.

**FIGURE A**



**INJECTOR - NOZZLE HOLE**

1. Be careful when cutting out shaded area on template to not cut out injector nozzle hole marks.
2. Measurement is the same from either side float bowl screw hole.
3. Center to center distance in decimals.  
A = .60625"  
B = 1.313"  
C = 1.446"

**IMPORTANT NOTES:**

1. Due to variances in the float assemblies on S&S carburetors it is important to rest float level and check for smooth operation of needle/seat assembly. ( it may be necessary to bend the tang on the float).
2. Installation of Super bowl kits on knuckleheads/Panheads may require a 1" spacing block between manifold and carburetor for clearance of pushrod covers.
3. It is **VERY IMPORTANT** to make sure that you the correct throttle bracket for your type of S&S carburetor.  
A. **Early** - Single throttle cable boss on carburetor body  
B. **LATE** - Two throttle cable bosses on carburetor body  
C. **Do not modify the Throttle Bracket!!!!**

**Early Bracket**



**Early Bracket – Fits carburetor with one throttle cable boss on body.**

**Late Bracket**



**Late Bracket – Fits Carburetor with two throttle cable bosses on the body.**

Our Super bowl kit fits all S&S super Carburetors but because of the two different style carburetor bodies produced, we offer both an early and late kit. It is very important that you order the correct Superbowl kit for your model of carburetor body. The difference in our kit is the throttle shaft brackets (the float bowl is the same). Late SB kit fits S&S carburetors made approximately 1982- present which has two throttle cable bosses on carburetor body. Early SB kit fits S&S carburetors made approximately prior to 1982 that have only one throttle cable boss on carburetor body. Regardless which carburetor you have you can only use one throttle cable with the Superbowl kit. Be sure to specifi the correct Superbowl kit for your models of S&S Super carburetor as the kits are not interchangeable.