

VT No. 35-9356 OKO Extreme Flow 55mm EFI Intake Manifold

Note: This kit is intended for High Performance applications only. Engine-related performance parts are intended FOR THE EXPERIENCED RIDER ONLY.

Installation Requirements

LOCTITE 243 MEDIUM STRENGTH THREADLOCKER AND SEALANT (BLUE) is required for proper installation of this kit.

WARNING

Rider and passenger safety depend upon the correct installation of this kit. Use the appropriate service manual procedures. If the procedure is not within your capabilities or you do not have the correct tools, have a dealer perform the installation. Improper installation of this kit could result in death or serious injury.

NOTE

This instruction sheet refers to service manual information. A service manual for this year/model motorcycle is required for this installation. One is available from a dealer.

PREPARATION

NOTE

For vehicles equipped with security siren: With security fob present, turn ignition switch ON. After system is disarmed, turn ignition switch OFF.

WARNING

To prevent spray of fuel, purge system of high-pressure fuel before supply line is disconnected. Gasoline is extremely flammable and highly explosive, which could result in death or serious injury.

1. Purge, disconnect and remove fuel supply line. See service manual.

WARNING: To prevent accidental vehicle start-up, which could cause death or serious injury, remove main fuse before proceeding.

2. Remove main fuse. See service manual.
3. Remove seat. Retain seat and all mounting hardware. See service manual.
4. Remove fuel tank. See service manuals.

REMOVE

WARNING

When servicing the fuel system, do not smoke or allow open flame or sparks in the vicinity. Gasoline is extremely flammable and highly explosive, which could result in death or serious injury.

1. Remove Original Equipment induction module. See service manual.
2. Remove fuel rail and mounting screws (A).
3. Remove injectors (B), T-MAP sensor (C), mounting screw and throttle body (E).
4. Save for transfer to new intake manifold.
5. Inspect T-MAP sensor O-ring. If damaged, replace sensor.

INSTALLATION

1. Apply a few drops of threadlocker to threads of fuel rail screws. LOCTITE 243 MEDIUM STRENGTH THREADLOCKER AND SEALANT (BLUE)
2. Install fuel rail and injectors with screws. Secure fuel rail screws. Tighten.

Torque: 4–6 N·m (35–53 in-lbs) Torx head screw

3. When installing T-MAP sensor on new throttle body, place a few drops of threadlocker on threads of T-MAP sensor screw. Tighten.

Torque: 3.4–3.6 N·m (30–32 in-lbs) T-MAP sensor screw

LOCTITE 243 MEDIUM STRENGTH THREADLOCKER AND SEALANT (BLUE)

4. Install new O-ring into intake manifold and mount manifold to throttle body using screws.
5. Connect fuel line to induction module.
 - a. Push fuel line firmly onto fuel rail inlet fitting until a click is heard.
 - b. Pull hose to verify secure attachment.
6. With counterbore facing outward, install flange adapters onto induction module.
7. Place a new seal in each flange adapter with beveled side against counterbore.
8. Install induction module.

NOTE

- a. Slide induction module into position until slots engage left side screws.
 - b. Start right side screws.
 - c. Temporarily fasten mounting bracket to cylinder heads with breather bolts.
9. Tighten right side screws until snug.
 10. Tighten left side screws until snug.
 11. Secure right and left side screws. Tighten.

Torque: 10.9–17.6 N·m (96–156 in-lbs)

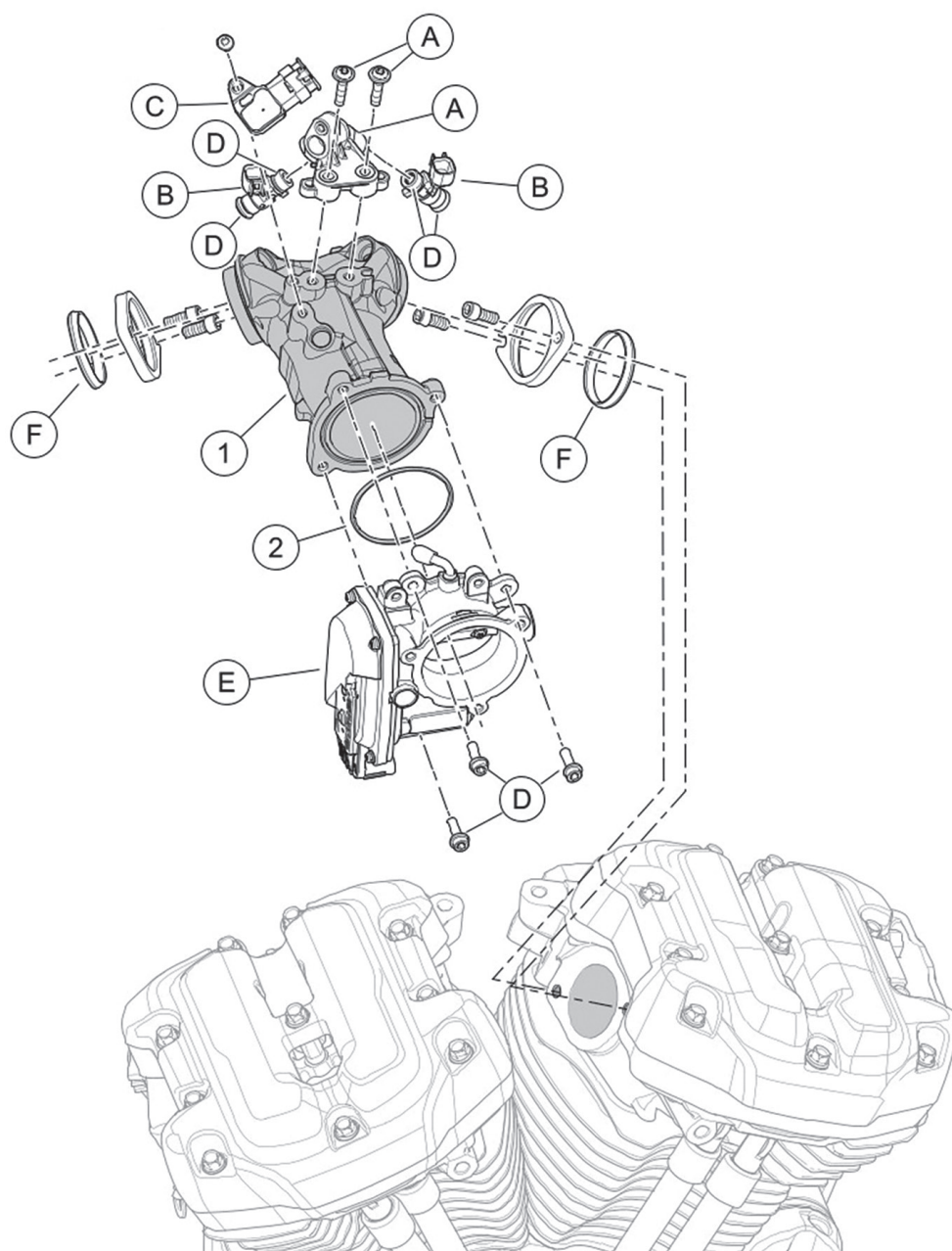
12. Install connections:

- a. Install rear fuel injector connector (black).
- b. Install front fuel injector connector (grey).
- c. Install TMAP sensor connector.
- d. Install TCA connector.
- e. Capture TCA harness to anchor point with new anchored cable strap.
- f. California models: Connect purge tube to fitting.
- g. Non-California models: Inspect rubber cap for damage.

13. Install fuel tank. See service manual.

14. Install seat. After installing seat, pull up on the seat to verify it is secure. See service manual.

15. Install main fuse. See service manual.



- 1 CNC intake manifold, 55mm
- 2 Seal, intake manifold, 55mm
- A Fuel rail kit
- B Fuel injector (2)
- C Sensor, TMAP
- E Throttle body assembly, 55mm
- F Seal, intake (2)