

**VT No. 36-0003 York 4” Clutch Cable Extension for 2021 Touring Models**

**VT No. 36-0004 York 6” Clutch Cable Extension for 2021 Touring Models**

**VT No. 36-0005 York 8” Clutch Cable Extension for 2021 Touring Models**



**WARNING:** The rider's safety depends upon the correct installation of this kit. Use the appropriate service manual procedures. If the procedure is not within your capabilities or you do not have the correct tools, contact a dealer to perform the installation. Improper installation of this kit could result in death or serious injury.

Test brakes at low speed. If brakes are not operating properly, testing at high speeds can cause loss of control, which could result in death or serious injury.



Tools & Supplies
3/8 Wrench
7/16 Wrench
Small Straight Screwdriver
Clutch Extension Kit

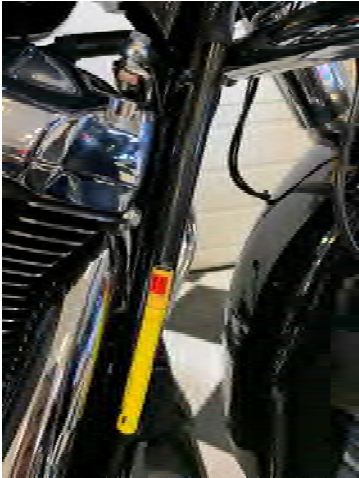
1. Locate the clutch cable adjuster on the right side of the frame down tube.



2. Remove the cable clips from the frame. They will be reused.



**3. Slide the adjustor tube up.**



**4. Use a straight screwdriver to remove the red clip. Then collapse the adjustor.**



**5. Rotate the yellow tube, and locate the little tab. Then separate it from the lower cable using the straight screwdriver.**



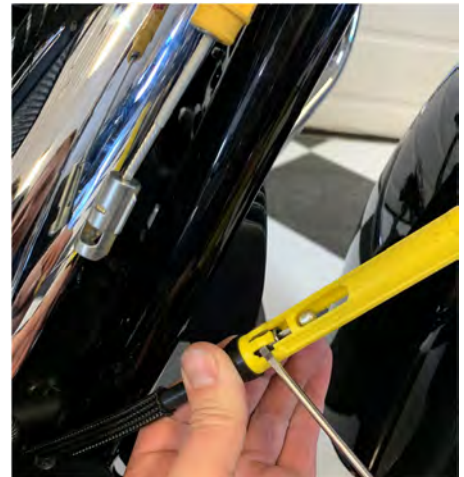
**6. Push the wire through from the backside using the screwdriver.**



**7. The cable is now split, as pictured.**



**8. Remove the yellow plastic piece by spreading open the two small tabs on each side.**





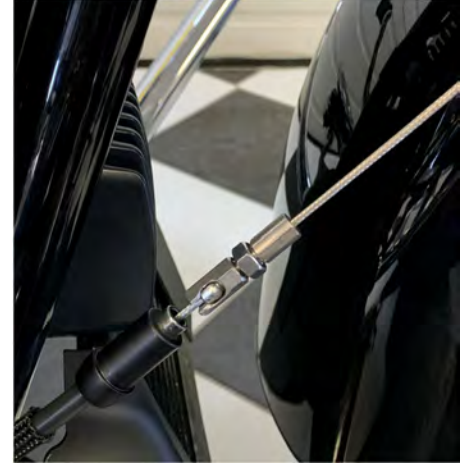
**9. This yellow part will not be reused.**



**10. Remove the lower portion from the tube extension, and slide it over the stock cable.**



**11. Use the two wrenches to loosen the adjuster on the wire extension. Slip the wire extension over the wire, hand tighten the nuts, bring the adjuster nut down, then tighten with the wrenches.**



**12. Slide the tube extension over the wire.**



**13. Push the upper clutch cable up the frame, and re-install into the new clutch extension tube.**



**14. Connect the upper cable to the lower cable, through the oval opening in the black tube.**



**15. Now you can adjust the clutch back cable and reinstall the black tube on cover.**



**16. After you slide the cover on, reinstall the frame clips.**

